

# Gallaudet University

## Enrollment Report Fall 2011

Office of the Chief Enrollment Management Officer {Producer}  
Office of Institutional Research {Data Source}  
October, 2011

## Table of Contents

Numbers of Newly Enrolled Students.....	3
Yield Rate Admitted to Enrolled .....	3
Fall 2011 Total Census Enrollment .....	4
Five-Year Fall Census Total Enrollment .....	5
Total Fall 2011 Degree-seeking Students by Category .....	6
Total Fall 2011 Undergraduate Degree-seeking Students by Category .....	7
Total Fall 2011 Graduate Degree-seeking Students by Category .....	8
Five-Year Fall Total Degree-seeking Enrollment Diversity by Year.....	9
Five-Year Undergraduate Degree-seeking Enrollment Diversity by Year.....	10
Five-Year Graduate Degree Enrollment Diversity by Year.....	11
Percent of New U.S. Undergraduate Students Who Are From Traditionally Underrepresented Groups .....	12
U.S. Degree-seeking by State Fall 2011 .....	13
Fall 2011 Degree-seeking International Students by Country.....	14
Fall 2011 Total Degree-seeking Undergraduate and Graduate Cochlear Implant Users .....	15
Total Degree-seeking Undergraduate and Graduate Cochlear Implant Users by Year.....	15
Average ACT Scores by Year of Entering Undergraduate Students.....	16
Fall 2011 New Undergraduate Degree-seeking by Applied, Accepted and Enrolled .....	17
Fall 2011 Graduate Degree-seeking Students by Applied, Accepted and Enrolled .....	18
Total Enrollment for Undergraduate by Student Type.....	19
Fall 2011 Undergraduate Degree-seeking Enrollment by Declared Majors and Minors .....	20
Fall 2011 New Graduate Degree-seeking Students by Program Applied, Accepted, and Enrolled .....	21
Total Fall 2011 Graduate Degree-seeking Enrollment by Program.....	22
Fall 2011 Hearing Undergraduate (HUG and BAI) Degree-seeking Enrollment by Declared Majors and Minors .....	23
Fall 2011 New Hearing Degree-seeking Undergraduates .....	24
Retention of First-time Freshmen by Race/Ethnicity .....	25
Persistence by Student Type .....	27
Six-Year Graduation Rate of First-Time Freshmen Cohorts by Category .....	28
Undergraduate Degrees Awarded by major by Year.....	29
Graduate Degrees Awarded by Discipline .....	30
Six-Year Graduation Rate of First-Time Freshmen Cohorts.....	31
Graduation Rate of Graduate Students .....	31

## Numbers of Newly Enrolled Students (Fall 2011)

School Year	Number of undergraduate students enrolled	Number of graduate students enrolled*
2011	302	168
2010	291	145
2009	300	142
2008	230	140
2007	230	117
2006	281	168
2005	351	147

\*Students who are new to Gallaudet, i.e. first-time students

## Yield Rate- Admitted to Enrolled (Fall 2011)

Year	Undergraduate: Percent of admitted students who enrolled	Graduate: Percent of admitted students who enrolled
2011	73%	75%
2010	76 %	63%
2009	78 %	69%
2008	75 %	61%
2007	66 %	55%
2006	73%	84%
2005	78 %	63%

## Fall 2011 Total Census Enrollment: Undergraduate, Graduate and Clerc

	<b>Total</b>	<b>Full-time</b>	<b>Part-time</b>
<b>UNDERGRADUATE</b>			
Undergraduate Degree-seeking	1,078	1,029	49
<i>Freshmen</i>	310	305	5
<i>Sophomores</i>	215	211	4
<i>Juniors</i>	277	272	5
<i>Seniors</i>	256	223	33
<i>Second degree</i>	20	18	2
Undergraduate Non Degree-seeking	40	-	40
<b>Total Undergraduate</b>	<b>1,118</b>	<b>1,029</b>	<b>89</b>
<b>GRADUATE</b>			
Graduate Degree-seeking	410	300	110
Graduate Non Degree-seeking	18	-	18
<b>Total Graduate</b>	<b>428</b>	<b>300</b>	<b>128</b>
<b>Total Undergraduate and Graduate</b>	<b>1,546</b>	<b>1,329</b>	<b>217</b>
<b>CLERC CENTER</b>			
Kendall Demonstration Elementary School	97	97	-
Model Secondary School for the Deaf	165	165	-
<b>Total Clerc Center</b>	<b>262</b>	<b>262</b>	<b>-</b>

## Five-Year Fall Census\* Total Enrollment: Undergraduate, Graduate and Clerc

	2007	2008	2009	2010	2011
<b>UNDERGRADUATE</b>					
Undergraduate Degree-seeking	1,018	964	1,055	1,064	1,078
Undergraduate Non Degree-seeking	22	22	28	36	40
<b>Undergraduate Total</b>	<b>1,040</b>	<b>986</b>	<b>1,083</b>	<b>1,100</b>	<b>1,118</b>
<b>GRADUATE</b>					
Graduate Degree-seeking	383	377	408	413	410
Graduate Non Degree-seeking	31	26	21	20	18
<b>Graduate Total</b>	<b>414</b>	<b>403</b>	<b>429</b>	<b>433</b>	<b>428</b>
<b>TOTAL Undergraduate and Graduate</b>	<b>1,454</b>	<b>1,389</b>	<b>1,512</b>	<b>1,533</b>	<b>1,546</b>
<b>CLERC CENTER</b>					
Kendall Demonstration Elementary School	127	120	105	99	97
Model Secondary School for the Deaf	164	149	151	140	165
<b>TOTAL CLERC CENTER</b>	<b>291</b>	<b>269</b>	<b>256</b>	<b>239</b>	<b>262</b>
<b>TOTAL</b>	<b>1,745</b>	<b>1,658</b>	<b>1,768</b>	<b>1,772</b>	<b>1,808</b>

\*Census data are recorded on the 15th day of the semester.

Total Fall 2011 Degree-seeking Students by Category

	<b>Undergraduate</b>	<b>Graduate</b>	<b>Total</b>
<b>Race/Ethnicity</b>			
International/ Resident Alien	55	24	79
Black/African American	122	27	149
Asian	46	11	57
Native Hawaiian/ Other Pacific Islander	1	1	2
American Indian/ Alaska Native	3	1	4
Hispanic/Latino	89	25	114
Caucasian/White	689	274	963
Two or more	63	15	78
Race and Ethnicity Unknown	10	32	42
<b>Gender</b>			
Male	508	82	590
Female	570	328	898
<b>Hearing Status</b>			
Deaf/Hard of hearing	997	183	1180
Hearing	81	218	299
Unknown	0	9	9
<b>Academic Load</b>			
Full-time	1,029	300	1,329
Part-time	49	110	159
<b>TOTAL</b>	<b>1,078</b>	<b>410</b>	<b>1,488</b>

## Total Fall 2011 Undergraduate Degree-seeking Students by Category

	Freshmen	Sophomores	Juniors	Seniors	Second Degree	TOTAL
<b>Race/Ethnicity</b>						
International/Resident Alien	20	10	11	8	6	55
Black/African American	46	23	19	34	0	122
Asian	16	10	9	11	0	46
American Indian/Alaska Native	0	0	0	3	0	3
Native Hawaiian/Other Pacific Islander	0	1	0	0	0	1
Hispanic of any race	32	20	26	10	1	89
Two or more	21	12	17	13	0	63
White	171	138	193	174	13	689
Race and ethnicity unknown	4	1	2	3	0	10
<b>Gender</b>						
Male	175	94	130	101	8	508
Female	135	121	147	155	12	570
<b>Hearing Status</b>						
Deaf/Hard of hearing	304	207	248	220	18	997
Hearing	6	8	29	36	2	81
<b>Academic Load</b>						
Full-time	305	211	272	223	18	1029
Part-time	5	4	5	33	2	49
<b>TOTAL</b>	<b>310</b>	<b>215</b>	<b>277</b>	<b>256</b>	<b>20</b>	<b>1,078</b>

## Total Fall 2011 Graduate Degree-seeking Students by Category

	Certificates	Masters	Specialists	Doctorates	TOTAL
<b>Race/Ethnicity</b>					
International/Resident Alien	1	16	0	7	24
Black/African American	0	13	1	13	27
Asian	1	7	0	3	11
American Indian/Alaska Native	0	0	0	1	1
Native Hawaiian/Other Pacific Islander	0	1	0	0	1
Hispanic of any race	0	14	3	8	25
Two or more	0	7	2	6	15
White	3	179	5	87	274
Race and ethnicity unknown	2	20	0	10	32
<b>Gender</b>					
Male	1	53	2	26	82
Female	6	204	9	109	328
<b>Hearing Status</b>					
Deaf/Hard of hearing	4	141	2	36	183
Hearing	3	109	8	98	218
Unknown	0	7	1	1	9
<b>Academic Load</b>					
Full-time	4	213	9	74	300
Part-time	3	44	2	61	110
<b>TOTAL</b>	<b>7</b>	<b>257</b>	<b>11</b>	<b>135</b>	<b>410</b>



## Five-Year Fall Total Degree-seeking Enrollment Diversity by Year

	2007	2008	2009	2010	2011
<b>Race/Ethnicity</b>					
International/Resident Alien	93	88	86	85	79
Black/African American	139	139	163	158	149
Asian	75	65	60	52	57
Native Hawaiian/Other Pacific Islander					2
American Indian/Alaska Native	27	25	23	9	4
Hispanic/Latino	104	96	113	135	114
Caucasian/White	925	890	993	930	963
Two or more				84	78
Race and Ethnicity Unknown	38	38	25	23	42
<b>Gender</b>					
Male	533	599	578	581	590
Female	868	822	882	896	898
Unknown			3		
<b>Hearing Status</b>					
Deaf/Hard of hearing	1,146	1,086	1,180	1,169	1,180
Hearing	247	249	281	300	299
Unknown	8	6	2	8	9
<b>Academic Load</b>					
Full-time	1,236	1,191	1,270	1,303	1,329
Part-time	165	150	193	174	159
<b>TOTAL</b>	<b>1,401</b>	<b>1,341</b>	<b>1,463</b>	<b>1,477</b>	<b>1,488</b>

## Five-Year Undergraduate Degree-seeking Enrollment Diversity by Year

	2007	2008	2009	2010	2011
<b>Race/Ethnicity</b>					
International/Resident Alien	75	61	56	57	55
Black/African American	109	100	118	122	122
Asian	61	51	46	39	46
Native Hawaiian/Other Pacific Islander					1
American Indian/Alaska Native	25	21	20	6	3
Hispanic/Latino	83	73	90	106	89
Caucasian/White	656	644	714	704	689
Two or more				23	63
Race and Ethnicity Unknown	9	14	11	6	10
<b>Gender</b>					
Male	456	438	492	489	508
Female	562	526	561	575	570
Unknown			2		
<b>Hearing Status</b>					
Deaf/Hard of hearing	986	925	997	987	997
Hearing	32	39	58	77	81
<b>Academic Load</b>					
Full-time	973	927	1,002	1,012	1,029
Part-time	45	37	53	52	49
<b>TOTAL</b>	<b>1,018</b>	<b>964</b>	<b>1,055</b>	<b>1,064</b>	<b>1,078</b>

## Five-Year Fall Graduate Degree-seeking Enrollment Diversity by Year

	2007	2008	2009	2010	2011
<b>Race/Ethnicity</b>					
International/Resident Alien	18	27	30	28	24
Black/African American	30	39	45	36	27
Asian	14	14	14	13	11
American Indian/Alaska Native	2	4	3	3	1
Native Hawaiian/Other Pacific Islander				0	1
Hispanic/Latino	21	23	23	29	25
Two or more				61	15
White	269	246	279	226	274
Race and ethnicity Unknown	29	24	14	17	32
<b>Gender</b>					
Male	77	81	86	92	82
Female	306	296	321	321	328
Unknown			1		
<b>Hearing Status</b>					
Deaf/Hard of hearing	160	161	183	182	183
Hearing Status	215	210	223	223	218
Unknown	8	6	2	8	9
<b>Academic Load</b>					
Full-time	263	264	268	291	300
Part-time	120	113	140	122	110
<b>TOTAL</b>	<b>383</b>	<b>377</b>	<b>408</b>	<b>413</b>	<b>410</b>

Percent of New U.S. Degree-seeking Undergraduate Students Who Are From Traditionally Underrepresented Groups\*

Year	Undergraduate Results in Percent
2011	37%
2010	33%
2009	27%
2008	27%
2007	27%
2006	27%
2005	32%
2004	38%
2003	33%
2002	32%

\*Includes Black/African American, Asian, Native Hawaiian/Other Pacific Islander, American Indian/Alaska Native, Hispanic/Latino, and "Two or More category"

## U.S. Degree-seeking by State Fall 2011

	Undergraduates	Graduates	Total
Alabama	13	0	13
Alaska	3	1	4
Arizona	16	5	21
Arkansas	6	1	7
California	109	37	146
Colorado	17	5	22
Connecticut	9	5	14
Delaware	5	1	6
District of Columbia	45	41	86
Florida	53	17	70
Georgia	23	6	29
Hawaii	8	0	8
Idaho	1	0	1
Illinois	29	13	42
Indiana	20	2	22
Iowa	5	2	7
Kansas	13	2	15
Kentucky	10	3	13
Louisiana	12	2	14
Maine	6	1	7
Maryland	130	58	188
Massachusetts	23	8	31
Michigan	20	9	29
Minnesota	26	10	36
Mississippi	2	0	2
Missouri	15	6	21
Montana	1	0	1
Nebraska	6	2	8
Nevada	3	1	4
New Hampshire	4	2	6
New Jersey	36	20	56
New Mexico	6	2	8
New York	55	25	80
North Carolina	18	8	26
North Dakota	0	0	0
Ohio	34	8	42
Oklahoma	10	1	11
Oregon	5	3	8
Pennsylvania	25	14	39
Puerto Rico	1	1	2
Rhode Island	3	3	6
South Carolina	7	2	9
South Dakota	0	0	0
Tennessee	17	1	18
Texas	70	14	84
Utah	8	0	8
Vermont	2	3	5
Virginia	56	30	86
Virgin Islands	0	0	0
Washington	13	3	16
West Virginia	7	1	8
Wisconsin	13	3	16
Wyoming	0	0	0
Unknown	4	4	8
<b>Grand Total</b>	<b>1,023</b>	<b>386</b>	<b>1,409</b>

### Top Five States of Fall 2011 U.S. Degree-Seeking Students

Undergraduate Students	#
Maryland	130
California	109
Texas	70
New York	55
Florida	53

Graduate Students	#
Maryland	58
District of Columbia	41
California	37
New York	25
Florida	17

## Fall 2011 Degree-seeking International Students by Country

	Undergraduates	Graduates	Total
Argentina	1	0	1
Bahamas	1	0	1
Belgium	1	0	1
Botswana	1	0	1
Brazil	1	0	1
Canada	22	3	25
China	2	1	3
Denmark	1	0	1
Fiji	1	0	1
France	1	0	1
India	4	0	4
Italy	1	0	1
Japan	1	3	4
Kenya	0	1	1
Korea, Republic of	0	1	1
Malaysia	0	1	1
Mali	1	0	1
Mongolia	0	1	1
Nepal	1	0	1
Netherlands	1	0	1
Nigeria	2	1	3
Peru	1	0	1
Saudi Arabia	2	1	3
Slovenia	1	0	1
Spain	0	1	1
Sri Lanka	1	0	1
Thailand	0	1	1
Unknown	7	9	16
<b>Grand Total</b>	<b>55</b>	<b>24</b>	<b>79</b>

Fall 2011

Total Degree-seeking Undergraduate and Graduate Cochlear Implant Users

	Cochlear Implants	Grand Total	Percent
Undergraduate	102	1,078	9%
Freshman	33	310	11%
Sophomore	28	215	13%
Junior	22	277	8%
Senior	19	256	7%
Second degree	0	20	0%
Graduate	3	410	1%
Grand Total	105	1,488	7%

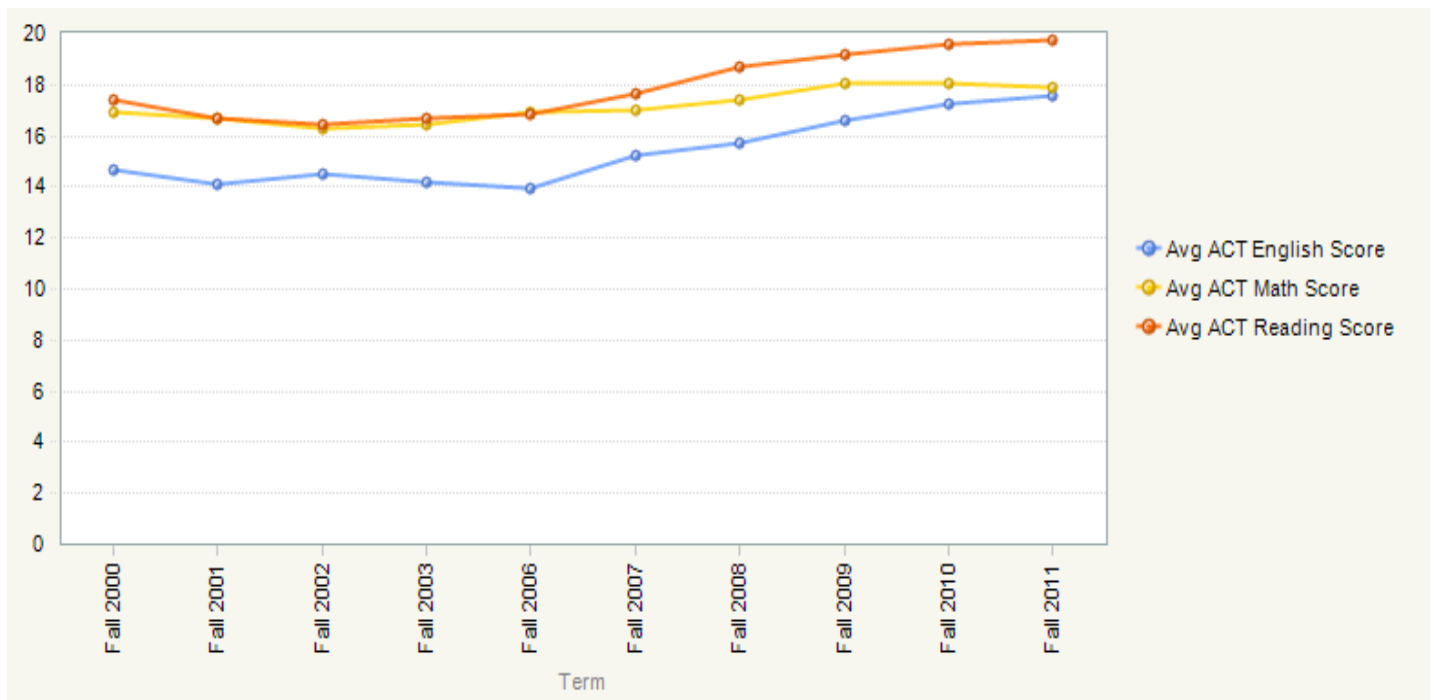
Total Degree-seeking Undergraduate and Graduate Cochlear Implant Users

by Year

	Fall 2006	Fall 2007	Fall 2008	Fall 2009	Fall 2010	Fall 2011
Undergraduate cochlear implant users	54	65	69	74	102	102
Percentage of undergraduate population	5%	6%	7%	7%	10%	9%
Graduate cochlear implant users	0	1	3	3	3	3
Percentage of graduate population	0%	0%	1%	1%	1%	1%

## Average ACT Scores By Year of Entering Undergraduate Students

	Fall 2000	Fall 2001	Fall 2002	Fall 2003	Fall 2006	Fall 2007	Fall 2008	Fall 2009	Fall 2010	Fall 2011	Grand Total
Avg ACT English Score	14.7	14.1	14.5	14.2	14.0	15.2	15.7	16.6	17.2	17.6	15.4
Avg ACT Math Score	16.9	16.7	16.3	16.4	16.9	17.0	17.4	18.1	18.1	17.9	17.2
Avg ACT Reading Score	17.4	16.7	16.4	16.7	16.8	17.6	18.7	19.2	19.6	19.7	17.9





Fall 2011 New Undergraduate Degree-Seeking by  
Applied, Accepted, and Enrolled

	Applied	Accepted	Enrolled
<b>By race/ethnicity</b>			
International/Resident Alien	33	12	7
Black/African American	105	55	41
Asian	25	18	14
American Indian/Alaska Native	4	2	0
Native Hawaiian/Other Pacific Islander	1	0	0
Hispanic of any race	61	43	34
Two or more	33	24	21
White/Caucasian	357	252	180
Race and ethnicity unknown	11	5	5
<b>By hearing status</b>			
Deaf/Hard of hearing	529	375	273
Hearing	101	36	29
<b>By gender</b>			
Male	285	198	161
Female	339	211	141
Unknown	6	2	0
<b>By application type</b>			
First-time freshmen	417	286	201
Transfers	206	121	99
Second degree	7	4	2
<b>Total</b>	<b>630</b>	<b>411</b>	<b>302</b>

## Fall 2011 Graduate Degree-seeking Students by Applied, Accepted and Enrolled\*

	Applied	Accepted	Enrolled
<b>By hearing status</b>			
Deaf/Hard of hearing	165	95	82
Hearing	323	128	83
Unknown	10	2	3
<b>By gender</b>			
Male	75	37	29
Female	419	188	139
Unknown	4	0	0
<b>By race/ethnicity</b>			
International	26	10	10
Asian	24	11	5
Black/African American	40	13	10
American Indian/Alaska Native	2	0	0
Native Hawaiian/Other Pacific Islander	0	0	0
Hispanic	40	16	9
Two or more	7	6	6
White	272	134	110
Unknown	87	35	18
<b>Total</b>	<b>498</b>	<b>225</b>	<b>168</b>

(Includes 38 who were new in Summer 2011.)

\* Students are those who are new to Gallaudet, i.e. first-time students

## Total Enrollment for Undergraduate by School Type

Year	Public School	Deaf School
2011	44%	56%
2010	41%	59%
2009	35%	65%
2008	32%	68%

## Fall 2011 Undergraduate Degree-seeking Enrollment by Declared Majors and Minors

	Majors	Minors
Accounting	19	
American Sign Language	19	
Art		10
Art History	2	
Biology		2
Biology, B.A.	7	
Biology, B.S.	10	
Business Administration	29	2
Chemistry		4
Chemistry, B.A.	3	
Chemistry, B.S.	5	
Communication Studies	35	3
Computer Information Systems	1	
Computer Science, B.A.	1	
Computer Science, B.S.	3	
Deaf Studies	27	2
Digital Media	9	
Economics & Finance		1
Education	17	
English	13	3
Family & Child Studies	15	8
French		4
Government	7	4
Graphic Design	13	
History	18	1
Interpretation	46	
Information Technology	13	3
International Studies	13	
Liberal Studies	2	
Linguistics		16
Mathematics		2
Mathematics, B.A.	4	
Mathematics, B.S.	9	
Philosophy		7
Photography	7	
Physical Education	35	3
Psychology	50	15
Recreation & Leisure Studies	2	
Recreation and Sports Program	22	10
Self-directed Major	1	
Social Work	42	
Sociology	16	9
Spanish	2	1
Studio Art	5	
Theatre Arts	21	4
Women's Studies		2
<b>Total Program enrollment</b>	<b>543</b>	<b>116</b>

Top Five Undergraduate Majors	#
Psychology	50
Interpretation	46
Social Work	42
Communication Studies/Physical Education	35
Business Administration	29

Note: Includes dual program enrollments.

Fall 2011 New Graduate degree-seeking Students by Program  
Applied, Accepted, and Enrolled

	Applied	Accepted	Enrolled
<b>Doctoral</b>			
Audiology, Au.D.	60	28	12
Audiology, Ph.D.	9	5	1
Deaf Education	13	8	7
Interpretation	9	8	6
Linguistics	9	5	5
Clinical Psychology	31	8	7
<b>Specialist</b>			
School Psychology, Psy.S.	11	8	5
<b>Certificate</b>			
Deaf History	2	2	2
Deaf and Hard of Hearing ITF	13	12	10
Deaf Students with Disabilities	5	2	1
Management	4	4	3
<b>Masters</b>			
Administration	5	2	1
Counseling: Mental Health	23	10	8
Counseling: School	26	17	17
Deaf Studies	30	16	13
Education: Elementary	13	9	6
Education: Advanced Studies	2	2	2
Education: Early Childhood	6	2	0
Education: Secondary	6	2	1
Education: Special Programs	7	6	2
Deaf Education: Teaching	15	8	7
International Development	11	8	6
Interpretation	41	12	11
Leisure Studies	1	0	0
Linguistics	13	11	8
Social Work	36	26	20
Sign Language Teaching	59	33	30
Speech-Language Pathology	135	29	14
<b>TOTAL</b>	<b>595</b>	<b>283</b>	<b>205</b>
<b>TOTAL HEADCOUNT</b>	<b>567</b>	<b>279</b>	<b>202</b>

Dual enrollments are included.

## Total Fall 2011 Graduate Degree-seeking Enrollment by Program

<b>Doctoral</b>	
Administration, Special Education	10
Audiology, Au.D.	40
Audiology, Ph.D.	9
Interpretation	14
Deaf Education	11
Linguistics	14
Clinical Psychology	39
<b>Total</b>	<b>137</b>
<b>Specialist</b>	
Change Leadership in Education, Ed.S.	1
School Psychology, Psy.S.	11
<b>Total</b>	<b>12</b>
<b>Certificate</b>	
Deaf History	4
Deaf and Hard of Hearing Infants, Toddlers, and Families	8
Deaf Students with Disabilities	1
Management	4
<b>Total</b>	<b>17</b>
<b>Masters</b>	
Administration	5
Audiology	1
Counseling: Mental Health	20
Counseling: School	22
Deaf Studies	26
Education: Advanced Studies	2
Education: Early Childhood	2
Education: Elementary	14
Education: Family-Child Centered	1
Education: Secondary	3
Education: Special Programs	2
Education: Teaching	14
International Development	17
Interpretation	27
Leisure Studies	4
Linguistics	18
Psychology	5
Sign Language Teaching	29
Social Work	35
Speech-Language Pathology	26
<b>Total</b>	<b>273</b>
<b>Total Program enrollment</b>	<b>439</b>
<b>Total Headcount enrollment</b>	<b>410</b>

Notes: Includes dual program enrollments. Enroute enrollment counted while student is pursuing another program.

## Fall 2011 Hearing Undergraduate (HUG and BAI) Degree-seeking Enrollment by Declared Majors and Minors

Plan	Majors			Minors		
	HUG	BAI	Total	HUG	BAI	Total
American Sign Language	3		3			
Biology - B.S.	1		1			
Chemistry				1		1
Communication Studies	2		2			
Deaf Studies	4		4	1		1
Education	3		3			
English	1		1			
Government					1	1
History	1		1	1		1
Information Technology				1		1
Interpretation	8	37	45			
Linguistics				2	2	4
Psychology	1		1		1	1
Recreation and Sports Program	1		1			
Social Work		1	1			
Sociology	1		1		1	1
Studio Art		1	1			
Theatre Arts	2		2			
Women's Studies				1		1
<b>Total Plan Enrollment</b>	<b>28</b>	<b>39</b>	<b>67</b>	<b>7</b>	<b>5</b>	<b>12</b>
<b>Headcount</b>	<b>43</b>	<b>38</b>	<b>81</b>			

Note: Includes dual program enrollments. HUG enrollment also includes 14 students who haven't yet declared a major

Type of Student	Count	Percent
Total number of undergraduate degree-seeking students	1078	100%
Total number of hearing undergraduate degree-seeking students (HUG)	43	4%

## Fall 2011 New Hearing Degree-seeking Undergraduates

	Count	Percent of Total
Fall 2011 New Students	302	
Students New to HUG program	13	4%
Students who Applied directly to BAI Program	16	
Total—New Hearing Students	29	10%



## Retention of First-time Freshmen by Race/Ethnicity

(1 of 2)

	Entering FTF Cohort	Retained to Year 2	%	Retained to Year 3	%	Retained to Year 4	%	Retained to Year 5	%	Retained to Year 6	%
<b>Overall</b>											
Cohort 06	212	115	54%	95	45%	96	45%	79	37%	30	14%
Cohort 07	176	107	61%	96	55%	96	55%	67	38%		
Cohort 08	181	136	75%	117	65%	107	59%				
Cohort 09	211	154	73%	133	63%						
Cohort 10	198	138	70%								
<b>Asian</b>											
Cohort 06	9	6	67%	5	56%	5	56%	3	33%	2	22%
Cohort 07	7	4	57%	4	57%	5	71%	2	29%		
Cohort 08	7	5	71%	4	57%	5	71%				
Cohort 09	9	4	44%	5	56%						
Cohort 10	9	8	89%								
<b>Black</b>											
Cohort 06	27	11	41%	8	30%	7	26%	7	26%	3	11%
Cohort 07	21	10	48%	8	38%	7	33%	7	33%		
Cohort 08	26	17	65%	13	50%	11	42%				
Cohort 09	28	20	71%	15	54%						
Cohort 10	24	13	54%								
<b>Hispanic</b>											
Cohort 06	12	7	58%	6	50%	8	67%	5	42%	4	33%
Cohort 07	16	7	44%	7	44%	6	38%	5	31%		
Cohort 08	14	13	93%	11	79%	10	71%				
Cohort 09	19	11	58%	9	47%						
Cohort 10	27	22	81%								
<b>American Indian or Alaska Native</b>											
Cohort 06	2	1	50%	0	0%	0	0%	0	0%	0	0%
Cohort 07	0	0	N/A	0	N/A	0	N/A	0	N/A		
Cohort 08	2	2	100%	1	50%	0	0%				
Cohort 09	1	0	0%	0	0%						
Cohort 10	0	0	N/A								
<b>Native Hawaiian or Other Pacific Islander</b>											
Cohort 06	N/A	N/A	N/A	N/A	N/A	N/A	N/A	N/A	N/A	N/A	N/A
Cohort 07	N/A	N/A	N/A	N/A	N/A	N/A	N/A	N/A	N/A		
Cohort 08	N/A	N/A	N/A	N/A	N/A	N/A	N/A				
Cohort 09	N/A	N/A	N/A	N/A	N/A						
Cohort 10	1	0	0%								
<b>Two or more</b>											
Cohort 06	N/A	N/A	N/A	N/A	N/A	N/A	N/A	N/A	N/A	N/A	N/A
Cohort 07	N/A	N/A	N/A	N/A	N/A	N/A	N/A	N/A	N/A		
Cohort 08	N/A	N/A	N/A	N/A	N/A	N/A	N/A				
Cohort 09	N/A	N/A	N/A	N/A	N/A						
Cohort 10	5	3	60%								

## Retention of First-time Freshmen by Race/Ethnicity

(2 of 2)

	Entering FTF Cohort	Retained to Year 2	%	Retained to Year 3	%	Retained to Year 4	%	Retained to Year 5	%	Retained to Year 6	%
<b>International</b>											
Cohort 06	12	6	50%	7	58%	7	58%	7	58%	1	8%
Cohort 07	6	3	50%	3	50%	4	67%	3	50%		
Cohort 08	9	6	67%	5	56%	5	56%				
Cohort 09	12	9	75%	10	83%						
Cohort 10	12	12	100%								
<b>White</b>											
Cohort 06	150	84	56%	69	46%	69	46%	57	38%	20	13%
Cohort 07	126	83	66%	74	59%	74	59%	50	40%		
Cohort 08	120	91	76%	81	68%	74	62%				
Cohort 09	140	110	79%	94	67%						
Cohort 10	120	80	67%								
<b>Gender: Female</b>											
Cohort 06	97	63	65%	51	53%	52	54%	42	43%	16	16%
Cohort 07	97	57	59%	54	56%	53	55%	35	36%		
Cohort 08	98	77	79%	64	65%	59	60%				
Cohort 09	112	86	77%	76	68%						
Cohort 10	107	77	72%								
<b>Gender: Male</b>											
Cohort 06	115	52	45%	44	38%	44	38%	37	32%	14	12%
Cohort 07	79	50	63%	42	53%	43	54%	32	41%		
Cohort 08	83	59	71%	53	64%	48	58%				
Cohort 09	99	68	69%	57	58%						
Cohort 10	91	61	67%								
<b>Traditionally Under-represented Groups (TUG): Asian, Black, Hispanic, American Indian/Alaska Native, Hispanic/Latino, and Two or More</b>											
Cohort 06	50	25	50%	19	38%	20	40%	15	30%	9	18%
Cohort 07	44	21	48%	19	43%	18	41%	14	32%		
Cohort 08	49	37	76%	29	59%	26	53%				
Cohort 09	57	35	61%	26	46%						
Cohort 10	66	46	70%								

## Persistence by Student Type

	Overall Entering First-Time Freshmen Percentage (retained to Year 2)  GPRA 1.6 target is 70%	Overall Entering First-Time Freshmen by Traditionally Underrepresented Groups*	Overall Graduate  GPRA 1.7 target is 87%	Overall Graduate by Traditionally Underrepresented Groups
Cohort 2005	64%	60%	77%	N/A
Cohort 2006	54%	50%	77%	N/A
Cohort 2007	61%	43%	80%	N/A
Cohort 2008	75%	76%	76%	N/A
Cohort 2009	73%	61%	77%	N/A
Cohort 2010	70%	70%	73%	68%

## Six-Year Graduation Rate of First-Time Freshmen Cohorts by Category

	2001 Cohort	2002 Cohort	2003 Cohort	2004 Cohort	2005 Cohort
<b>Overall</b>					
Cohort count	213	237	238	227	280
Graduated within 6 years	54	69	94	79	116
Six-year graduation rate	25%	29%	39%	35%	41%
<b>by Gender - Male</b>					
Cohort count	100	113	113	106	129
Graduated within 6 years	20	34	38	33	48
Six-year graduation rate	20%	30%	34%	31%	37%
<b>by Gender - Female</b>					
Cohort count	113	124	124	121	151
Graduated within 6 years	34	35	56	46	68
Six-year graduation rate	30%	28%	45%	38%	45%
<b>by Race/Ethnicity - Traditionally Underrepresented Groups</b>					
Cohort count	49	72	72	77	84
Graduated within 6 years	9	22	24	34	22
Six-year graduation rate	18%	31%	33%	44%	26%
<b>by Race/Ethnicity - Asian</b>					
Cohort count	7	17	12	12	9
Graduated within 6 years	2	4	9	10	2
Six-year graduation rate	29%	24%	75%	83%	22%
<b>by Race/Ethnicity - Black/African American</b>					
Cohort count	28	27	35	33	35
Graduated within 6 years	4	10	9	9	5
Six-year graduation rate	14%	37%	26%	27%	14%
<b>by Race/Ethnicity - Hispanic</b>					
Cohort count	14	20	20	15	26
Graduated within 6 years	3	7	5	6	7
Six-year graduation rate	21%	35%	25%	40%	27%
<b>by Race/Ethnicity - American Indian or Alaska Native</b>					
Cohort count	0	8	5	17	14
Graduated within 6 years	N/A	1	1	9	8
Six-year graduation rate	N/A	13%	20%	53%	57%
<b>by Race/Ethnicity - White</b>					
Cohort count	126	146	143	128	176
Graduated within 6 years	35	36	61	40	88
Six-year graduation rate	28%	25%	43%	31%	50%
<b>by Race/Ethnicity - International</b>					
Cohort count	31	18	18	21	20
Graduated within 6 years	9	10	8	5	6
Six-year graduation rate	29%	56%	44%	24%	30%

## Undergraduate Degrees Awarded by Major by Year

	2006-07	2007-08	2008-09	2009-10	2010-11
Accounting	7	6	10	11	8
American Sign Language	9	3	3	3	8
Art	6	2		2	1
Art History			1		3
Biology, B.A.		1	2	1	8
Biology, B.S.	7	2	4	5	2
Business Administration	19	12	10	10	10
Chemistry, B.A.					1
Chemistry, B.S.		7	4	3	1
Communication Studies	12	18	24	24	20
Computer Information Systems	4	2	5	3	1
Computer Science, B.A.		2			
Computer Science, B.S.	1	1	1	3	
Deaf Studies	8	4	5	4	12
Digital Media	3	3	3	1	1
Economics	1	1			
Economics & Finance	1				
Education	11	12	19	15	9
English	2	4	8	4	3
Family & Child Studies	13	18	10	8	13
Finance	2			2	
French	1		1		1
Government	8	4	5	4	9
Graphic Design	4	9	5	7	4
History	8	9	5	5	6
International Studies					3
Interpretation		3	5	2	5
Mathematics, B.A.	4	6	3	6	4
Mathematics, B.S.	2		1	5	
Philosophy	1	1	1	1	1
Physical Education	3	18	7	11	11
Photography				2	3
Psychology	11	13	15	14	13
Recreation & Leisure Studies	6	1	7	4	1
Recreation & Sports					5
Self-directed Major		2	3	4	5
Social Work	11	13	9	6	7
Sociology	8	8	7	4	5
Spanish	2	1	1	2	2
Studio Art	3	4	6	5	
Television & Photography	1	2			
Theatre Arts		5	1	1	3
TOTAL Degrees Awarded	179	197	191	182	189
Distinct headcount of graduates	160	185	175	172	179

\*Includes programs awarding dual degrees to single graduates.

Cut-off dates for each year are as follows: 2005-06 (9/26/06); 2006-07 (9/11/07); 2007-08 (9/10/08); 2008-09 (9/30/09); 2009-10 (9/15/10); 2010-11 (9/21/11)

## Graduate Degrees Awarded by Discipline

	2006-07	2007-08	2008-09	2009-10	2010-11
<b>Doctoral</b>	<b>10</b>	<b>10</b>	<b>13</b>	<b>24</b>	<b>24</b>
Administration, Special Education	1	3		1	2
Audiology, Au.D.	5	3	10	13	9
Audiology, Ph.D.		1	1	2	
Deaf Education	3	1	1		3
Linguistics				1	4
Clinical Psychology	1	2	1	7	6
<b>Specialist</b>	<b>8</b>	<b>11</b>	<b>8</b>	<b>14</b>	<b>16</b>
Change Leadership in Education, Ed.S.	2	7	3	7	8
Deaf Education, Ed.S.	1			2	2
School Psychology, Psy.S.	5	4	5	5	6
<b>Certificate</b>	<b>0</b>	<b>1</b>	<b>3</b>	<b>9</b>	<b>2</b>
Deaf History				1	1
Cultural Diversity and Human Services				8	
International Development			1		
Management		1	2		1
<b>Masters</b>	<b>96</b>	<b>108</b>	<b>94</b>	<b>99</b>	<b>108</b>
Administration	3	5	1	5	9
Audiology	4	10	6	2	6
Counseling: Mental Health	8	6	3	6	6
Counseling: School	12	7	5	11	3
Deaf Education: ASL/English Bilingual	3	4	3	2	4
Deaf Studies	11	10	4	6	11
Developmental Psychology	6	6	5	4	4
Education: Elementary		3	3		1
Education: Family-Child Centered	5	4	1	2	4
Education: Multiple Disabilities				1	1
Education: Secondary		1	2	1	1
Education: Special Programs	5	3	11	8	10
Hearing, Speech, and Language: Non-clinical				5	1
International Development			6	7	5
Interpretation	2	6	11	8	5
Leisure Studies	3	1	2		1
Linguistics	5	6	2	5	9
Psychology	5	7	5	5	7
Social Work	6	17	13	11	7
School Social Work	9	1			
Speech-Language Pathology	9	11	11	10	13
<b>Total Degrees awarded</b>	<b>114</b>	<b>130</b>	<b>118</b>	<b>146</b>	<b>150</b>
<b>Distinct students who graduated</b>	<b>112</b>	<b>129</b>	<b>116</b>	<b>138</b>	<b>148</b>

Notes: Includes programs awarding dual degrees to single graduates.

Cut-off dates for each year are as follows: 2006-07 (9/11/07); 2007-08 (9/10/08); 2008-09 (9/30/09); 2009-10 (9/15/10); 2010-11 (9/19/11)

## Six Year Graduation Rate of First-Time Freshmen Cohorts

Overall	Undergraduate GPRA 1.10 Target is 32% GSP goal is 50% by 2015	Undergraduate by Traditionally Underrepresented Groups
Cohort 2005	41%	26%
Cohort 2004	35%	44%
Cohort 2003	39%	33%
Cohort 2002	29%	31%
Cohort 2001	25%	18%
Cohort 2000	32%	29%

\*National average rate for BA/BS private institutions is 69%. National Collegiate Retention and Persistence to Degree Rates, (Retrieved from [https://www.noellelitz.com/documents/shared/Papers\\_and\\_Research/ACT\\_Data/2011%20ACT%20Retention%20tables-web.pdf](https://www.noellelitz.com/documents/shared/Papers_and_Research/ACT_Data/2011%20ACT%20Retention%20tables-web.pdf))

## Graduation Rate of Graduate Students

Overall	Graduate *GPRA 1.11 Target is 70%
2011	72%
2010	74%
2009	74%
2008	63%
2007	78%
2006	74%

\*Target Context: A new methodology for calculating graduate persistence rate was developed in 2011. A new target of 70% was also established.