

2005 Enrollment Report



Office of Enrollment Services
January 2006

2005 Enrollment Report

Table of Contents

FALL 2005

Total University Enrollment

Table 1	Total University Enrollment by Gender and Academic Load, Fall 2005	2
Table 2	Total University Enrollment Five-Year History, Fall 2001 to Fall 2005	3

Total Degree-Seeking Enrollment

Table 3	Degree-Seeking University Enrollment by Demographics, Fall 2005	5
Table 4	Degree-seeking U.S. Students by State of Origin, Fall 2005	6
Table 5	Degree-seeking International Students by Country of Origin, Fall 2005	7
Table 6	Undergraduate Declared Majors and Minors by Discipline, Fall 2005	8
Table 7	Graduate Degree Program Enrollment by Discipline, Fall 2005	9

Degree-Seeking New Admissions

Table 8	Degree-Seeking Applications, Admissions, and Enrollments, Fall 2005	11
Table 9	Demographics of New Degree-seeking Undergraduate Students, Fall 2005	12
Table 10	English/Math Placement Test Results, Fall 2005	13
Table 11	Demographics of New Degree-seeking Graduate Students, Fall 2005	14

ACADEMIC YEAR 2004-05

Total University Enrollment

Table 12	Total University Enrollment, AY 2004-05	16
Table 13	Total University Unduplicated Headcount 5-Year History, AY 2000-01 to AY 2004-05	16
Table 14	Total University Enrollment by Gender and Academic Load, Spring 2005	17
Table 15	Total University Enrollment by Gender and Academic Load, Summer 2005	18

Total Degree-Seeking Enrollment

Table 16	Degree-Seeking University Enrollment by Demographics, Spring 2005	20
Table 17	Degree-Seeking University Enrollment by Demographics, Summer 2005	21
Table 18	Degrees Awarded by Type of Degree Five-Year History, AY 2000-01 to AY 2004-05	22
Table 19	Degrees Awarded by Demographics of Degree Recipients, AY 2004-05	22
Table 20	Undergraduate Degrees Awarded by Discipline, AY 2004-05	23
Table 21	Graduate Degrees Awarded by Discipline, AY 2004-05	24

Attrition & Persistence

Table 22	Undergraduate One-Year Graduation, Attrition, and Persistence, Fall 2004 to Fall 2005	26
Table 23	Undergraduate Semester-to-Semester Graduation, Attrition, and Persistence, Fall 2004 to Spring 2005 and Spring 2005 to Fall 2005	27
Table 24	Long-term Retention Rates by 6-Year Cohort, Fall 1999 to Fall 2004	28

FALL 2005
Total University Enrollment

**Table 1: Total University Enrollment by Gender & Academic Load
Fall 2005**

		Grand Total	Full-Time			Part-Time			
			Total	Men	Women	Total	Men	Women	
UNDERGRADUATES	Degree-seeking								
		Freshmen	511	505	237	268	6	4	2
		Sophomores	249	243	113	130	6	4	2
		Juniors	223	219	92	127	4	2	2
		Seniors	222	200	100	100	22	15	7
		Second Degree	8	7	4	3	1	0	1
		Degree-seeking sub-total	1,213	1,174	546	628	39	25	14
		Non degree-seeking							
		Undergraduate Special	16	N/A	N/A	N/A	16	6	10
		Exchange	0	N/A	N/A	N/A	0	0	0
		Consortium	0	N/A	N/A	N/A	0	0	0
		Visiting	7	N/A	N/A	N/A	7	0	7
		Undergraduate Extension	0	N/A	N/A	N/A	0	0	0
		International Interns	0	N/A	N/A	N/A	0	0	0
		English Language Institute	38	N/A	N/A	N/A	38	18	20
	Non degree-seeking sub-total	61	N/A	N/A	N/A	61	24	37	
	Undergraduate Total	1,274	1,174	546	628	100	49	51	
GRADUATES	Degree-seeking								
		Certificates	16	6	3	3	10	1	9
		Masters	240	203	32	171	37	10	27
		Specialists	29	11	1	10	18	8	10
		Doctorates	134	77	11	66	57	14	43
		Degree-seeking sub-total	419	297	47	250	122	33	89
		Non degree-seeking							
		Graduate Special	45	N/A	N/A	N/A	45	11	34
		International Interns	2	N/A	N/A	N/A	2	2	0
		Non degree-seeking sub-total	47	N/A	N/A	N/A	47	13	34
	Graduate Total	466	297	47	250	169	46	123	
	Professional Studies	173	N/A	N/A	N/A	173	53	120	
	UNIVERSITY TOTAL	1,913	1,471	593	878	442	148	294	

Note: Beginning in Spring 2004, all non-degree students (including PST students) are counted as part-time enrolled.

**Table 2: Total University Enrollment Five-Year History
Fall 2001 to Fall 2005**

		2001	2002	2003	2004	2005
UNDERGRADUATES	Degree-seeking					
	Freshmen	451	481	484	486	511
	Sophomores	223	214	216	219	249
	Juniors	212	211	209	200	223
	Seniors	250	241	234	223	222
	Second Degree	11	16	11	8	8
	Degree-seeking sub-total	1,147	1,163	1,154	1,136	1,213
	Non-degree seeking					
	Undergraduate Special	36	24	24	21	16
	Exchange	1	1	0	0	0
	Consortium	0	0	2	1	0
	Visiting	13	9	5	8	7
	Undergraduate Extension	21	15	23	0	0
	International Interns	6	8	8	5	0
English Language Institute	21	23	20	36	38	
Non degree-seeking Sub-total	98	80	82	71	61	
Undergraduate Total	1,245	1,243	1,236	1,207	1,274	

GRADUATES	Degree-seeking					
	Certificate †	9	60	21	19	16
	Masters †	233	249	237	239	240
	Specialists	0	1	20	34	29
	Doctorates †	113	114	127	133	134
	Degree-seeking sub-total	355	424	405	425	419
	Non-degree seeking					
	Graduate Special*	35	62	101	25	45
	Graduate Extension	88	115	‡	‡	‡
	International Interns	0	1	‡	1	2
	Non-degree seeking sub-total	123	178	101	26	47
Graduate Total	478	602	506	451	466	

Professional Studies	103	179	70	176	173
-----------------------------	------------	------------	-----------	------------	------------

UNIVERSITY TOTAL	1,826	2,024	1,812	1,834	1,913
-------------------------	--------------	--------------	--------------	--------------	--------------

* The Graduate Special count includes Consortium students.

† This table does not include dual degree program enrollments.

‡ In 2003, Graduate Extension students and International Interns were included with the Graduate Special count. Beginning in 2004, counting rules for Graduate Extension students were changed so they are now included with Graduate Special students.

FALL 2005
Total Degree-Seeking Enrollment

**Table 3: Degree-Seeking University Enrollment by Demographics
Fall 2005**

	TOTAL	Deaf	Hearing	Unknown	Inter- national	Traditionally Under-represented Groups					Caucasian	Refused/ Unknown
						African American	Asian American	Native American	Hispanic/ Latino			
Undergraduates												
Freshmen	511	498	12	1	43	64	25	27	49	300	3	
Sophomores	249	238	7	4	18	33	16	9	27	142	4	
Juniors	223	207	11	5	22	23	6	8	15	144	5	
Seniors	222	207	5	10	33	21	10	6	16	133	3	
Second Degree	8	7	0	1	0	0	0	1	2	5	0	
Undergraduate sub-total	1,213	1,157	35	21	116	141	57	51	109	724	15	
Graduates												
Certificates	16	13	3	0	2	0	2	0	0	11	1	
Masters	240	123	113	4	15	20	9	3	9	169	15	
Specialists	29	16	11	2	3	2	0	0	2	22	0	
Doctorates	134	35	96	3	4	17	8	1	9	83	12	
Graduate sub-total	419	187	223	9	24	39	19	4	20	285	28	
DEGREE-SEEKING TOTAL	1,632	1,344	258	30	140	180	76	55	129	1,009	43	

**Table 4: Degree-Seeking U.S. Students by State of Origin
Fall 2005**

	Under-graduate	Graduate	TOTAL		Under-graduate	Graduate	TOTAL
Alabama	5	4	9	Montana	1	0	1
Alaska	2	2	4	Nebraska	3	2	5
Arizona	25	5	30	Nevada	1	3	4
Arkansas	4	1	5	New Hampshire	1	1	2
California	113	29	142	New Jersey	35	10	45
Colorado	9	2	11	New Mexico	8	4	12
Connecticut	12	1	13	New York	76	27	103
Delaware	8	1	9	North Carolina	14	6	20
District of Columbia	66	45	111	North Dakota	1	0	1
Florida	54	17	71	Ohio	38	5	43
Georgia	21	3	24	Oklahoma	1	0	1
Guam	0	0	0	Oregon	10	4	14
Hawaii	7	0	7	Pennsylvania	55	18	73
Idaho	1	0	1	Puerto Rico	0	1	1
Illinois	48	8	56	Rhode Island	6	2	8
Indiana	32	4	36	South Carolina	14	0	14
Iowa	7	7	14	South Dakota	5	2	7
Kansas	12	5	17	Tennessee	13	0	13
Kentucky	9	0	9	Texas	47	13	60
Louisiana	13	0	13	Utah	3	1	4
Maine	1	0	1	Vermont	2	2	4
Maryland	105	77	182	Virginia	41	38	79
Massachusetts	25	11	36	Washington	21	6	27
Michigan	27	2	29	West Virginia	3	0	3
Minnesota	33	6	39	Wisconsin	21	7	28
Mississippi	2	0	2	Wyoming	0	0	0
Missouri	13	0	13	Unknown	23	13	36

TOTAL STUDENTS	1,097	395	1,492
-----------------------	--------------	------------	--------------

Top Five States of Origin	
<u>Undergraduate</u>	<u>Graduate</u>
1. California	1. Maryland
2. Maryland	2. District of Columbia
3. New York	3. Virginia
4. District of Columbia	4. California
5. Pennsylvania	5. New York

Top Five States of Origin
<u>Total Enrollment</u>
1. Maryland
2. California
3. District of Columbia
4. New York
5. Pennsylvania

**Table 5: Degree-Seeking International Students by Country of Origin
Fall 2005**

	Undergraduate	Graduate	Total
Argentina	0	1	1
Barbados	1	0	1
Canada	46	6	52
Chile	2	0	2
China	5	1	6
Congo	1	0	1
Denmark	0	1	1
Gabon	1	0	1
Greece	0	1	1
India	5	0	5
Ireland	1	1	2
Jamaica	1	0	1
Japan	5	0	5
Kenya	0	2	2
Korea, Republic of	4	1	5
Kuwait	1	0	1
Lebanon	1	0	1
Mexico	0	1	1
Netherlands	2	0	2
Nigeria	5	1	6
Norway	1	0	1
Philippines	2	1	3
Rwanda	1	0	1
Saudi Arabia	2	0	2
Spain	1	0	1
South Africa	1	0	1
Sweden	3	0	3
Taiwan, Rep. of China	2	0	2
Thailand	0	1	1
United Arab Emirates	3	0	3
United Kingdom	1	0	1
Unknown	18	6	24
TOTAL STUDENTS	116	24	140
TOTAL COUNTRIES	25	12	31

**Table 6: Undergraduate Declared Majors and Minors by Discipline
Fall 2005**

Bachelor of Arts		Bachelor of Science		Minors	
Discipline	Students	Discipline	Students	Discipline	Students
American Sign Language	4	Accounting	16	Accounting	3
Art History	25	Biology	11	Art History	9
Biology	6	Business Administration	28	Athletic Coaching	3
Chemistry	1	Chemistry	5	Business Administration	5
Communication Studies	38	Computer Information Systems	6	Chemistry	1
Computer Science	0	Computer Science	4	Communication Studies	4
Deaf Studies	5	Economics	4	Computer Information Systems	4
Digital Media	5	Economics & Finance	2	Computer Science	1
Education	33	Education	0	Deaf Studies	1
English	5	Family & Child Studies	19	English	4
French	3	Finance	1	Family Studies	7
Government	15	Mathematics	3	French	3
Graphic Design	9	Physical Education	19	Government	1
History	14	Recreation & Leisure Studies	11	Mathematics	1
Interpretation	0	B.S. sub-total	129	Physical Education	1
Mathematics	9			Psychology	5
Philosophy	3	Total Declared Majors	396	Recreation & Leisure Studies	3
Psychology	16			Sociology	3
Self-Directed Major	3			Spanish	11
Social Work	29			Television and Photography	1
Sociology	25			Women's Studies	2
Spanish	3	Top Five Majors by Number of Students		Total Declared Minors	73
Studio Art	1	1. Communication Studies			
Television and Photography	8	2. Education			
Theatre Arts	7	3. Social Work			
B.A. sub-total	267	4. Business Administration			
		5. Art History			

Note: This table includes dual degree program declarations.

**Table 7: Graduate Degree Program Enrollment by Discipline
Fall 2005**

Doctoral	136
Administration: Special Education	27
Audiology (Au.D.)	33
Audiology (Ph.D.)	6
Education	20
Linguistics	18
Psychology: Clinical	32
Specialist	36
Administration & Supervision (Ed.S.)	0
Change Leadership in Education (Ed.S.)	14
Deaf Education (Ed.S.)	1
School Psychology (Psy.S.)	21
Certificate	22
Deaf History	4
Integrating Technology in the Classroom	0
International Development	16
Leadership	0
Management	2
Master's	262
Administration	12
Counseling: Mental Health	20
Counseling: School	24
Deaf Education: ASL/English Bilingual	6
Deaf Studies	24
Developmental Psychology	17
Education: Advanced Studies	1
Education: Elementary	16
Education: Family-Child Centered	10
Education: Multiple Disabilities	21
Education: Secondary	10
Education: Special Programs	7
Interpretation	10
Leisure Studies	6
Linguistics	17
Social Work	37
Speech-Language Pathology	24
TOTAL	456

Note: This table includes dual degree program enrollments.

The M.A. degree in Developmental Psychology is a part of the School Psychology, Psy.S. program. Students receive their M.A. degree upon the successful completion of their comprehensive examinations.

FALL 2005

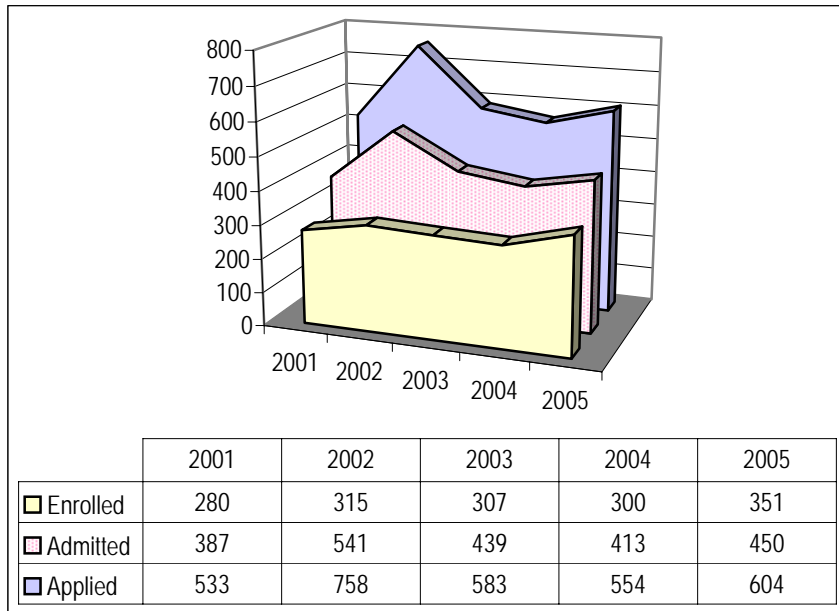
Degree-Seeking New Admissions

**Table 8: Degree-Seeking Applications, Admissions, and Enrollments
Fall 2005**

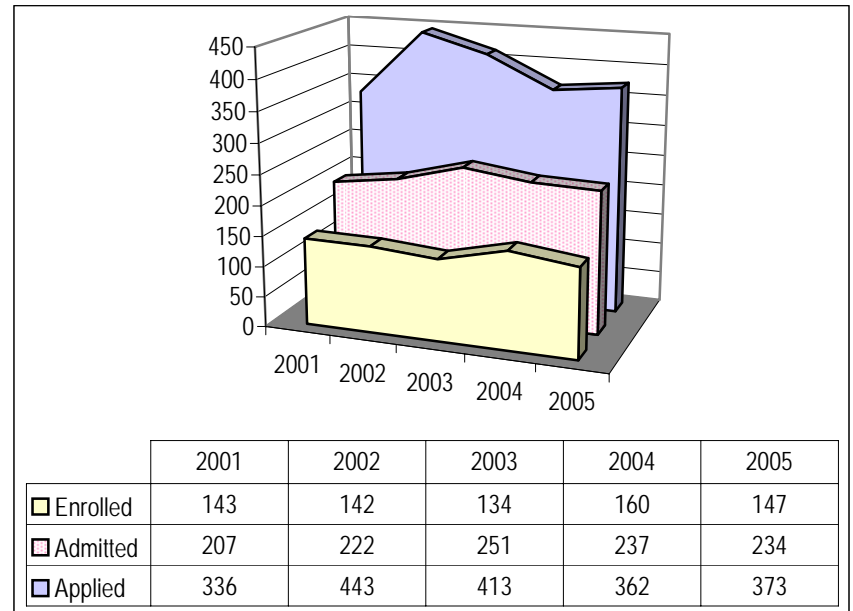
Undergraduate Admissions				
	Applied	Admitted	Enrolled	Enrollment Yield
New Freshmen	478	361	280	78%
Transfers	126	89	71	80%
TOTAL	604	450	351	78%

Graduate Admissions				
	Applied	Admitted	Enrolled	Enrollment Yield
New Graduates	373	234	147	63%
TOTAL	373	234	147	63%

Undergraduate Fall Application, Admission, and Enrollment History, Fall 2001 to Fall 2005



Graduate Fall Application, Admission, and Enrollment History, Fall 2001 to Fall 2005



**Table 9: Demographics of New Degree-Seeking Undergraduate Students
Fall 2005**

	First-time Freshmen	Transfer	ALL
Fall Enrollment	280	71	351

Age			
17-18	142	0	142
19	75	10	85
20-22	50	23	73
23-25	5	17	22
26-29	5	8	13
30-39	3	11	14
40+	0	2	2
Average Age	19.0	25.0	20.0

Gender			
Male	129	32	161
Female	151	39	190

Ethnic Background			
International	20	5	25
African-American	35	7	42
Asian-American	9	4	13
Native American	14	2	16
Hispanic/Latino	26	6	32
Caucasian	176	47	223

Previous Institution			
Residential/Day Deaf Sch	174	3	177
Mainstreamed HS Program	90	4	94
Community College	0	25	25
College/University	0	34	34
Other	16	5	21

	First-time Freshmen	Transfer	ALL
Deafness in Family			
Deaf Family Members*	64	7	71
Both Parents	80	4	84
One Parent	9	4	13
Sibling(s)	91	8	99

For this demographic, students may be counted in more than one category.

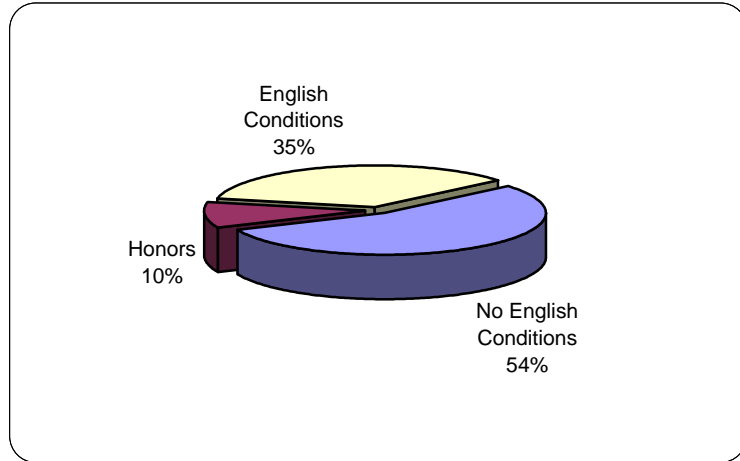
* Deaf Family Members = other than parent or sibling

Self-rated Sign Ability			
Native/Excellent	199	32	231
Good	56	18	74
Fair	8	7	15
Poor	4	1	5
None	2	5	7
No Response	11	8	19

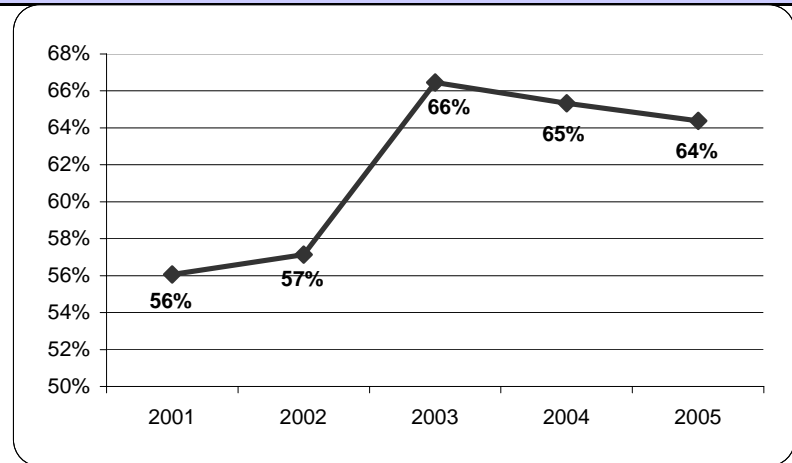
Transfer Students Accepted as...	
Freshmen	39
Sophomores	20
Juniors	10
Seniors	1
Second Degrees	1

**Table 10: New Undergraduate Admissions English and Math Placement Test Results
Fall 2005**

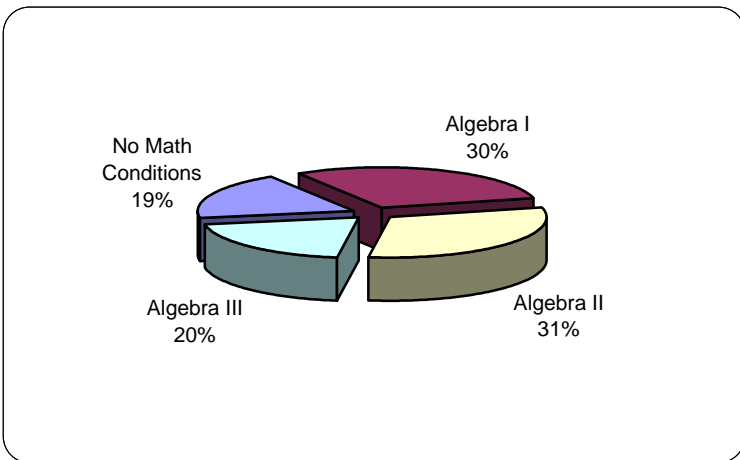
English Placement Results



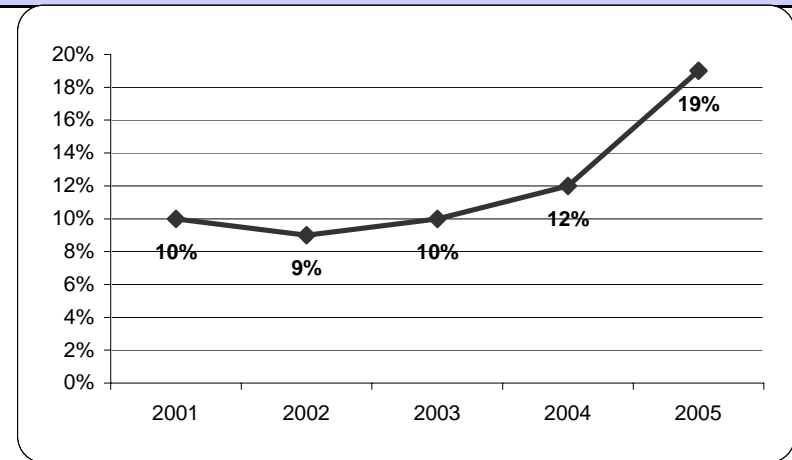
Percentage of New Undergraduates who Tested into Freshman English or Higher, 2001 to 2005



Math Placement Results



Percentage of New Undergraduates who Tested into Freshman Math or Higher, 2001 to 2005



**Table 11: Demographics of New Degree-Seeking Graduate Students
Fall 2005**

Fall Enrollment

Dual degree candidates	10
Fall Headcount	147

Age

21-25	86
26-29	23
30-39	29
40-49	7
50+	2
Average age	27.0

Gender

Male	29
Female	118

Ethnic Background

International	11
African-American	9
Asian-American	7
Native American	2
Hispanic/Latino	6
Caucasian	104
Unknown	8

Hearing Status

Deaf/Hard of Hearing	75
Hearing	69
Unknown	3

DEGREE PROGRAM ENROLLMENTS*

Doctoral 25

Administration: Special Education	2
Audiology (Au.D.)	12
Audiology (Ph.D.)	1
Education	0
Linguistics	2
Psychology: Clinical	8

Specialist 13

Administration & Supervision (Ed.S.)	0
Change Leadership in Education (Ed.S.)	7
Deaf Education (Ed.S.)	1
School Psychology (Psy.S.)	5

Certificate 14

Deaf History	3
Integrating Technology in the Classroom	0
International Development	9
Leadership	0
Management	2

Master's 105

Administration	4
Counseling: Mental Health	7
Counseling: School	7
Deaf Education: ASL/English Bilingual	4
Deaf Studies	13
Developmental Psychology	5
Education: Advanced Studies	0
Education: Elementary	6
Education: Family-Child Centered	3
Education: Multiple Disabilities	2
Education: Secondary	8
Education: Special Programs	3
Interpretation	2
Leisure Studies	3
Linguistics	10
Social Work	16
Speech-Language Pathology	12

TOTAL 157

* This table includes dual degree program enrollments.

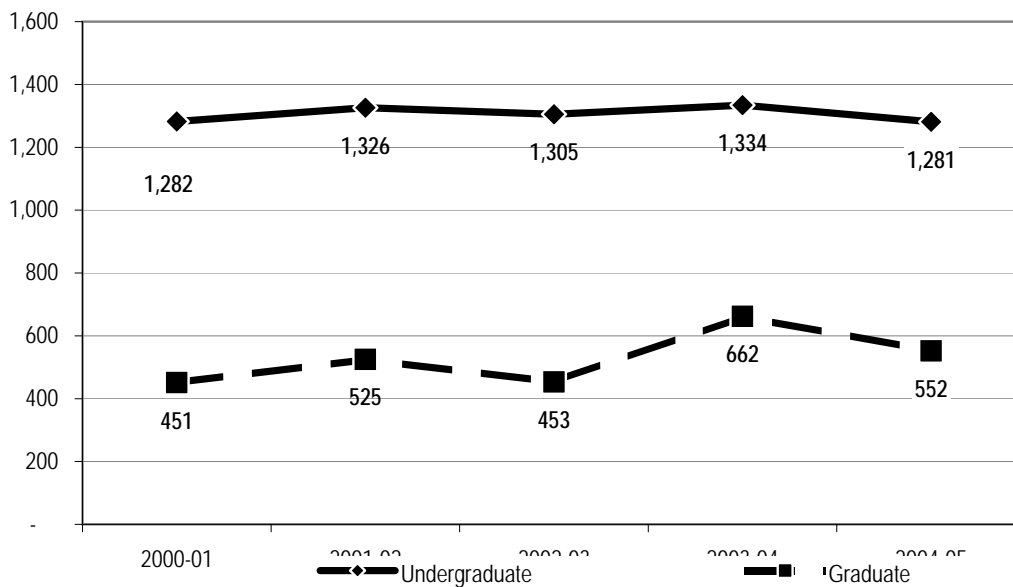
ACADEMIC YEAR 2004-2005

Total University Enrollment

**Table 12: Total University Enrollment
AY 2004-05**

	Fall 2004	Spring 2005	Summer 2005	
UNDERGRADUATES	Degree-seeking	1,136	1,057	222
	Freshmen	486	337	19
	Sophomores	219	243	47
	Juniors	200	194	62
	Seniors	223	274	91
	Second Degree	8	9	3
	Non-degree seeking	71	33	7
	Undergraduate Special	21	25	6
	Consortium	1	1	0
	Visiting	8	0	1
	International Interns	5	7	0
	English Language Institute	36	0	0
	Undergraduate Total	1,207	1,090	229
	GRADUATES	Degree-seeking	425	401
Certificates		19	15	1
Masters		239	233	80
Specialists		34	26	8
Doctorates		133	127	46
Non-degree seeking		26	29	24
Graduate Special		24	26	24
Consortium		1	1	0
International Interns		1	2	0
Graduate Total	451	430	159	
Professional Studies	176	284	356	
TOTAL	1,834	1,804	744	

**Table 13: Total University Unduplicated (Degree-Seeking) Headcount 5-Year History
AY 2000-01 to AY 2004-05**



**Table 13: Total University Enrollment by Gender & Academic Load
Spring 2005**

	Grand Total	Full-Time			Part-Time				
		Total	Men	Women	Total	Men	Women		
UNDERGRADUATES	Degree-seeking								
	Freshmen	337	332	165	167	5	4	1	
	Sophomores	243	239	104	135	4	2	2	
	Juniors	194	187	89	98	7	3	4	
	Seniors	274	247	121	126	27	16	11	
	Second Degree	9	5	1	4	4	2	2	
	Degree-seeking sub-total	1,057	1,010	480	530	47	27	20	
	Non degree-seeking								
	Undergraduate Special	25	N/A	N/A	N/A	25	9	16	
	Exchange	0	N/A	N/A	N/A	0	0	0	
	Consortium	1	N/A	N/A	N/A	1	0	1	
	Visiting	0	N/A	N/A	N/A	0	0	0	
	Undergraduate Extension	0	N/A	N/A	N/A	0	0	0	
	International Interns	7	N/A	N/A	N/A	7	3	4	
	English Language Institute	0	N/A	N/A	N/A	0	0	0	
Non degree-seeking sub-total	33	N/A	N/A	N/A	33	12	21		
Undergraduate Total	1,090	1,010	480	530	80	39	41		
GRADUATES	Degree-seeking								
	Certificates	15	0	0	0	15	1	14	
	Masters	233	198	33	165	35	6	29	
	Specialists	26	10	1	9	16	8	8	
	Doctorates	127	66	9	57	61	13	48	
	Degree-seeking sub-total	401	274	43	231	127	28	99	
	Non degree-seeking								
	Graduate Special	26	N/A	N/A	N/A	26	8	18	
	Consortium	2	N/A	N/A	N/A	2	0	2	
	International Interns	1	N/A	N/A	N/A	1	0	1	
Non degree-seeking sub-total	29	N/A	0	0	29	8	21		
Graduate Total	430	274	43	231	156	36	120		
Professional Studies	284	N/A	N/A	N/A	284	69	208	7	
UNIVERSITY TOTAL	1,804	1,284	523	761	520	144	369	7	

Unknown

Note: Beginning in Spring 2004, all non-degree students (including PST students) are counted as part-time enrolled.

**Table 14: Total University Enrollment by Gender & Academic Load
Summer 2005**

		Grand Total	Full-Time			Part-Time			
			Total	Men	Women	Total	Men	Women	
UNDERGRADUATES	Degree-seeking								
		Freshmen	19	9	5	4	10	4	6
		Sophomores	47	24	13	11	23	10	13
		Juniors	62	25	7	18	37	14	23
		Seniors	91	22	12	10	69	34	35
		Second Degree	3	0	0	0	3	0	3
		Degree-seeking sub-total	222	80	37	43	142	62	80
		Non degree-seeking							
		Undergraduate Special	6	N/A	N/A	N/A	6	0	6
		Exchange	0	N/A	N/A	N/A	0	0	0
		Consortium	0	N/A	N/A	N/A	0	0	0
		Visiting	1	N/A	N/A	N/A	1	0	1
		Undergraduate Extension	0	N/A	N/A	N/A	0	0	0
		International Interns	0	N/A	N/A	N/A	0	0	0
		English Language Institute	0	N/A	N/A	N/A	0	0	0
		Non degree-seeking sub-total	7	N/A	N/A	N/A	7	0	7
	Undergraduate Total	229	80	37	43	149	62	87	
GRADUATES	Degree-seeking								
		Certificate	1	0	0	0	1	0	1
		Masters	80	13	2	11	67	10	57
		Specialist	8	7	5	2	1	0	1
		Doctorate	46	2	0	2	44	4	40
		Degree-seeking sub-total	135	22	7	15	113	14	99
		Non degree-seeking							
		Graduate Special	24	N/A	N/A	N/A	24	4	20
		Consortium	0	N/A	N/A	N/A	0	0	0
		International Interns	0	N/A	N/A	N/A	0	0	0
	Non degree-seeking sub-total	24	N/A	N/A	N/A	24	4	20	
	Graduate Total	159	22	7	15	137	18	119	
								Unknown	
	Professional Studies	358	N/A	N/A	N/A	358	68	287	3
	UNIVERSITY TOTAL	746	102	44	58	644	148	493	3

Note: Beginning in Spring 2004, all non-degree students (including PST students) are counted as part-time enrolled.

ACADEMIC YEAR 2004-2005

Total Degree-Seeking Enrollment

**Table 16: Degree-Seeking University Enrollment by Demographics
Spring 2005**

	TOTAL	Deaf	Hearing	Unknown	Inter- national	Traditionally Under-represented Groups				Caucasian	Refused/ Unknown
						African American	Asian American	Native American	Hispanic/ Latino		
Undergraduates											
Freshmen	337	330	5	2	39	48	19	20	29	178	4
Sophomores	243	235	5	3	18	33	13	7	27	138	7
Juniors	194	182	5	7	29	19	6	7	13	116	4
Seniors	274	256	7	11	29	25	11	4	15	184	6
Second Degree	9	8	0	1	1	0	0	1	1	6	0
Undergraduate sub-total	1,057	1,011	22	24	116	125	49	39	85	622	21
Graduates											
Certificate	15	7	8	0	0	1	1	0	0	8	5
Masters	233	110	118	5	16	19	6	2	14	165	11
Specialist	26	12	11	3	2	1	0	0	0	23	0
Doctorate	127	33	91	3	3	17	8	0	7	82	10
Graduate sub-total	401	162	228	11	21	38	15	2	21	278	26
DEGREE-SEEKING TOTAL	1,458	1,173	250	35	137	163	64	41	106	900	47

**Table 17: Degree-Seeking University Enrollment by Demographics
Summer 2005**

	TOTAL	Deaf	Hearing	Unknown	Traditionally Under-represented Groups					Caucasian	Refused/ Unknown
					Inter- national	African American	Asian American	Native American	Hispanic/ Latino		
Undergraduates											
Freshmen	19	19	0	0	0	2	0	3	5	7	2
Sophomores	47	44	1	2	2	7	2	2	6	26	2
Juniors	62	59	3	0	2	6	4	2	7	41	0
Seniors	91	82	2	7	8	9	2	0	6	65	1
Second Degree	3	3	0	0	0	0	0	0	1	2	0
Undergraduate sub-total	222	207	6	9	12	24	8	7	25	141	5
Graduates											
Certificate	1	0	1	0	0	0	0	0	0	0	1
Masters	80	33	47	0	2	11	4	2	5	53	3
Specialists	8	6	0	2	1	0	0	0	0	7	0
Doctorates	46	6	40	0	1	8	1	0	4	27	5
Graduate sub-total	135	45	88	2	4	19	5	2	9	87	9
DEGREE-SEEKING TOTAL	357	252	94	11	16	43	13	9	34	228	14

**Table 18: Degrees Awarded by Type of Degree Five-Year History
AY 2000-01 to AY 2004-05**

	Bachelors	Graduate Certificates	Masters	Specialists	Doctorates	TOTAL
2000-2001	142	N/A	104	6	11	263
2001-2002	174	N/A	92	9	10	285
2002-2003	147	N/A	117	4	16	284
2003-2004	155	2	116	6	16	295
2004-2005	170	12	107	9	19	317

Note: This table includes dual degrees program awards.

**Table 19: Degrees Awarded by Demographics of Degree Recipients
AY 2004-05**

	Bachelors	Graduate Certificates	Masters	Specialists	Doctorates	Total
By Gender						
Male	72	0	17	3	1	93
Female	86	12	89	6	18	211
By Race/Ethnicity						
International	21	2	6	0	1	30
African-American	12	1	9	0	1	23
Asian-American	5	1	4	0	0	10
Native American	1	0	0	0	0	1
Hispanic/Latino	7	0	7	0	0	14
Caucasian	111	4	75	9	15	214
Unknown	1	4	5	0	2	12
TOTAL	158	12	106	9	19	304

Note: In AY 2004-05, 170 undergraduate degrees were awarded to 158 individuals and 147 graduate degrees were awarded to 146 individuals.

**Table 20: Undergraduate Degrees Awarded by Discipline
AY 2004-05**

Bachelor of Arts		Bachelor of Science	
Major	Students	Major	Students
American Sign Language	7	Accounting	9
Art	15	Biology	2
Biology	0	Business Administration	13
Chemistry	0	Chemistry	0
Communication Studies	15	Computer Information Systems	5
Computer Science	0	Computer Science	2
Digital Media	0	Economics & Finance	3
Deaf Studies	9	Education	8
Education	0	Family & Child Studies	11
English	6	Mathematics	0
French	2	Physical Education	7
Government	6	Recreation & Leisure Studies	3
History	5	Self-Directed Major	0
Mathematics	4	B.S. sub-total	63
Philosophy	1		
Psychology	8		
Self-Directed Major	2	Total Degrees Awarded	170
Social Work	16		
Sociology	4		
Spanish	3		
Studio Art	0		
Television & Photography	1		
Theatre Arts	3		
B.A. sub-total	107		

Top Five Degrees Awarded	
1. Social Work	
2. Art; Communication Studies (tied)	
3. Business Administration	
4. Family & Child Studies	
5. Accounting; Deaf Studies (tied)	

Note: This table includes dual degree program awards.

**Table 21: Graduate Degrees Awarded by Discipline
AY 2004-05**

Doctoral	19
Administration: Special Education	4
Audiology (Au.D.)	8
Audiology (Ph.D.)	0
Education	1
Linguistics	1
Psychology: Clinical	5
Specialist	9
Administration & Supervision (Ed.S.)	5
Change Leadership in Education (Ed.S.)	0
Deaf Education (Ed.S.)	1
School Psychology (Psy.S.)	3
Certificate	12
Deaf History	0
Integrating Technology in the Classroom	6
International Development	6
Leadership	0
Management	0
Masters	107
Administration	10
Counseling: Mental Health	5
Counseling: School	13
Deaf Education: ASL/English Bilingual	0
Deaf Studies	11
Developmental Psychology	5
Education: Advanced Studies	2
Education: Elementary	8
Education: Family-Child Centered	5
Education: Multiple Disabilities	2
Education: Secondary	1
Education: Special Programs	5
Hearing, Speech, and Language: Non-clinical	1
Interpretation	6
Leisure Services Administration	2
Linguistics	8
Psychology	5
Social Work	7
Speech-Language Pathology	11
TOTAL	147

Note: This table includes dual degree program awards.

ACADEMIC YEAR 2004-2005

Attrition & Persistence

**Table 22: Undergraduate One-Year Graduation, Attrition, and Persistence
Fall 2004 to Fall 2005**

	Enrolled Fall 2004	Graduated	Dismissed	Withdrew	Persisted to Fall 2005
TOTAL	1,136	148	52	189	747
Percentage		13%	5%	17%	66%
By Class					
Freshmen	486	0	34	138	314
Sophomores	219	0	11	16	192
Juniors	200	15	4	14	167
Seniors	223	132	3	17	71
Second Degree	8	1	0	4	3
By Gender					
Men	541	66	35	96	344
Women	595	82	17	93	403
By Race/Ethnicity					
International	125	20	6	17	82
African-American	138	11	13	27	87
Asian-American	54	5	2	8	39
Native American	44	1	1	10	32
Hispanic/Latino	81	6	1	11	63
Caucasian	672	104	26	110	432
Unknown	22	1	3	6	12

Note: The one-year attrition rates in the table above are for fall-to-fall enrollment. They do not include students who were newly admitted and enrolled in the spring.

**Table 23: Undergraduate Semester-to-Semester Graduation, Attrition, and Persistence
Fall 2004 to Spring 2005 and Spring 2005 to Fall 2005**

	Enrolled Fall 2004	Graduated	Dismissed	Withdrew	Persisted to Spring 2005	Enrolled Spring 2005	Graduated	Dismissed	Withdrew	Persisted to Fall 2005
Total	1,136	34	20	109	973	1,057	114	32	124	787
By Class										
Freshmen	486	0	17	87	382	337	0	17	67	253
Sophomores	219	0	2	5	212	243	0	9	17	217
Juniors	200	0	1	10	189	194	0	3	12	179
Seniors	223	34	0	6	183	274	113	3	24	134
2nd Degree	8	0	0	1	7	9	1	0	4	4
By Gender										
Male	541	16	12	54	459	507	50	23	71	363
Female	595	18	8	55	514	550	64	9	53	424
By Race/Ethnicity										
International	125	8	2	14	101	116	11	4	12	89
African-American	138	4	5	14	115	125	7	8	17	93
Asian-American	54	1	2	4	47	49	4	0	6	39
Native American	44	0	0	9	35	39	1	1	5	32
Hispanic/Latino	81	2	0	3	76	85	4	1	10	70
Caucasian	672	19	10	63	580	622	86	16	70	450
Unknown	22	0	1	2	19	21	1	2	4	14

Note: The spring 2005 enrollment counts incorporate new and returning degree-seeking students. As a result, combined totals for the semester-to-semester graduation, attrition, and persistence statistics may not equal the one-year graduation, attrition, and persistence figures in Table 22.

**Table 24: Long-term Retention Rates by 6-Year Cohort of New Undergraduate Students
Fall 1999 to Fall 2004**

All Students										
Year	Enrolled	Retained						Graduated*		
		After 1 Year	After 2 Years	After 3 Years	After 4 Years	After 5 Years	After 6 Years	Within 4 years	Within 5 years	Within 6 years
1999	322	64%	49%	42%	31%	18%	8%	9%	19%	29%
2000	313	65%	48%	40%	27%	14%		11%	25%	
2001	270	69%	44%	37%	27%			11%		
2002	315	67%	48%	42%						
2003	307	70%	52%							
2004	300	74%								

First-time Freshmen										
Year	Enrolled	Retained						Graduated*		
		After 1 Year	After 2 Years	After 3 Years	After 4 Years	After 5 Years	After 6 Years	Within 4 years	Within 5 years	Within 6 years
1999	254	63%	47%	42%	33%	18%	9%	6%	17%	27%
2000	241	66%	48%	39%	29%	14%		7%	24%	
2001	213	68%	44%	39%	31%			5%		
2002	237	61%	41%	40%						
2003	238	70%	53%							
2004	227	75%								

Transfers										
Year	Enrolled	Retained						Graduated*		
		After 1 Year	After 2 Years	After 3 Years	After 4 Years	After 5 Years	After 6 Years	Within 4 years	Within 5 years	Within 6 years
1999	68	69%	59%	44%	25%	18%	6%	21%	26%	38%
2000	72	61%	50%	43%	19%	14%		25%	33%	
2001	57	74%	46%	28%	12%			32%		
2002	78	83%	68%	47%						
2003	69	71%	49%							
2004	73	73%								

*The "Graduated" percentages are cumulative.