

# **2001 Enrollment Report**

**Gallaudet**  **University**

Office of Institutional Research  
June 2002

# TABLE OF CONTENTS

Introduction	3
--------------	---

## ENROLLMENT

Table 1:	Fall 2001 Enrollment	5
Table 2:	Fall Enrollment History 1990-2001	6
Table 3:	Deaf/Hearing & Racial/Ethnic Characteristics of Fall 2001 Enrollment	8
Figure 1:	Deaf/Hearing & Racial/Ethnic Distribution of Fall 2001 Enrollment	9
Table 4:	Fall Enrollment History by Racial/Ethnic Distribution 1990-2001	10
Table 5:	Fall 2001 U.S. Enrollment by State	11
Table 6:	Fall 2001 International Enrollment by Country	12
Table 7:	Fall 2001 Full- and Part-Time Enrollment by Gender	13
Table 8:	Fall 2001 Undergraduate Majors by Department	14
Table 9:	Fall 2001 Graduate Majors	15
Table 10:	Total Annual Enrollment Academic Year 2000-2001	16
Table 11:	Annual Unduplicated Headcount Enrollment Academic Years 1995 to 2001	17
Table 12:	Annual Institutional Activity Academic Years 1997-2000	18

## ADMISSIONS

Table 13:	Fall 2001 Undergraduate Admissions Summary and History of Fall Applications, Admissions, and Registrations 1995-2001	20
Table 14:	Fall Graduate Degree-Seeking Applications, Admissions, and Registrations 1995-2001	21
Table 15:	Fall 2001 New Degree-Seeking Undergraduate Students by Demographic Characteristics	22
Figure 2:	Fall 2001 New Degree-Seeking Undergraduate Students by English & Mathematics Placement Test Performance	23
Table 16:	Fall 2001 New Degree-Seeking Graduate Students by Demographic Characteristics and Programs	24

## GRADUATION, PERSISTENCE, AND ATTRITION

Table 17:	Undergraduate One-Year Graduation, Attrition, and Persistence	26
Figure 3:	Undergraduate One-Year Attrition Trends 1990-2001	27
Table 18:	Undergraduate One-Year Attrition by Class, Gender, and Race/Ethnicity 1990-2001	27
Table 19:	Long-Term Retention Rate of Entering Undergraduate Classes 1995-2000	28
Table 20:	Degrees Awarded Academic Years 1989-2000	29
Table 21:	Degrees Awarded by Gender and Race/Ethnicity Academic Year 2000-2001	30
Table 22:	Undergraduate Degrees by Discipline Academic Year 2000-2001	31
Table 23:	Graduate Degrees by Discipline Academic Year 2000-2001	32

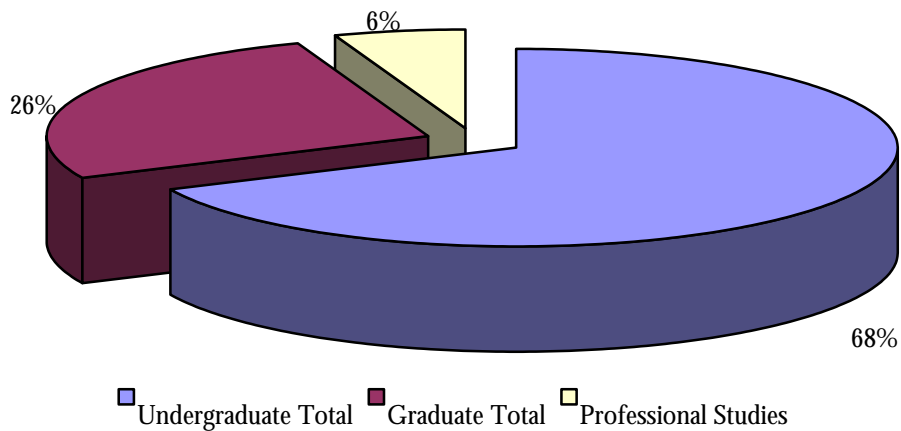
## **INTRODUCTION**

Gallaudet University's total enrollment for fall 2001 is 1,826. This includes 1,245 undergraduate, 478 graduate, and 103 professional studies students. Many of the tables in this report focus on the 1,147 degree-seeking undergraduate and 355 degree-seeking graduate students. The Office of Institutional Research welcomes suggestions from members of the Gallaudet community on how the content and format of this report could be improved.

# **Enrollment**

**TABLE 1: FALL 2001 ENROLLMENT**

Freshmen	451
Sophomores	223
Juniors	212
Seniors	250
Second Degree	11
Undergraduate Special	36
Exchange	1
Visiting	13
Undergraduate Extension	21
International Interns	6
English Language Institute	21
<b>Undergraduate Total</b>	<b>1,245</b>
Masters	233
Educational Specialist	0
Doctoral	113
Certificate	9
Graduate Special	35
Graduate Extension	88
International Interns	0
<b>Graduate Total</b>	<b>478</b>
<b>Professional Studies</b>	<b>103</b>
<b>TOTAL</b>	<b>1,826</b>



**TABLE 2: FALL ENROLLMENT HISTORY  
1990-2001**

	<b>1990</b>	<b>1991</b>	<b>1992</b>	<b>1993</b>	<b>1994</b>	<b>1995</b>
Preparatory	247	196	228	180	161	
A.A.S.	23	28	27	21	18	8
Freshmen	587	502	507	552	511	583
Sophomores	317	299	285	256	289	264
Juniors	302	299	302	260	265	274
Seniors	304	323	336	315	297	287
Second Degree			17	11	8	12
Undergraduate Special	39	41	44	51	38	48
Exchange	1	1	2	2	5	0
Visiting	5	9	12	12	10	10
Undergraduate Extension						
International Interns						
English Language Institute						
<b>Undergraduate Total</b>	<b>1,825</b>	<b>1,698</b>	<b>1,760</b>	<b>1,660</b>	<b>1,602</b>	<b>1,486</b>
Masters	239	228	243	256	236	243
Educational Specialist	1	0	0	0	2	1
Doctoral	34	37	45	58	65	71
Summer Study	6	6	0	5	9	6
Certificate						
Graduate Special	88	69	69	52	60	68
Graduate Extension	75	75	64	68	89	205
International Interns						
<b>Graduate Total</b>	<b>443</b>	<b>415</b>	<b>421</b>	<b>439</b>	<b>461</b>	<b>594</b>
<b>Professional Studies</b>	<b>116</b>	<b>130</b>	<b>79</b>	<b>102</b>	<b>112</b>	<b>128</b>
<b>TOTAL</b>	<b>2,384</b>	<b>2,243</b>	<b>2,260</b>	<b>2,201</b>	<b>2,175</b>	<b>2,208</b>

**TABLE 2: FALL ENROLLMENT HISTORY  
1990-2001**

	<b>1996</b>	<b>1997</b>	<b>1998</b>	<b>1999</b>	<b>2000</b>	<b>2001</b>
Preparatory						
A.A.S.						
Freshmen	481	476	501	503	537	451
Sophomores	243	260	220	221	210	223
Juniors	245	216	240	218	202	212
Seniors	284	256	236	248	233	250
Second Degree	8	11	20	13	6	11
Undergraduate Special	31	27	36	25	41	36
Exchange	1	0	0	0	0	1
Visiting	9	5	10	10	6	13
Undergraduate Extension	42	88	32	74	63	21
International Interns			5	6	0	6
English Language Institute					23	21
<b>Undergraduate Total</b>	<b>1,344</b>	<b>1,339</b>	<b>1,300</b>	<b>1,318</b>	<b>1,321</b>	<b>1,245</b>
Masters	261	280	302	285	253	233
Educational Specialist	0	1	0	2	2	0
Doctoral	71	79	81	95	103	113
Summer Study	11	14	17	0	0	0
Certificate	1	0	1	0	10	9
Graduate Special	54	72	40	35	63	35
Graduate Extension	178	268	185	124	194	88
International Interns			2	0	0	0
<b>Graduate Total</b>	<b>576</b>	<b>714</b>	<b>628</b>	<b>541</b>	<b>625</b>	<b>478</b>
<b>Professional Studies</b>	<b>114</b>	<b>92</b>	<b>70</b>	<b>86</b>	<b>93</b>	<b>103</b>
<b>TOTAL</b>	<b>2,034</b>	<b>2,145</b>	<b>1,998</b>	<b>1,945</b>	<b>2,039</b>	<b>1,826</b>

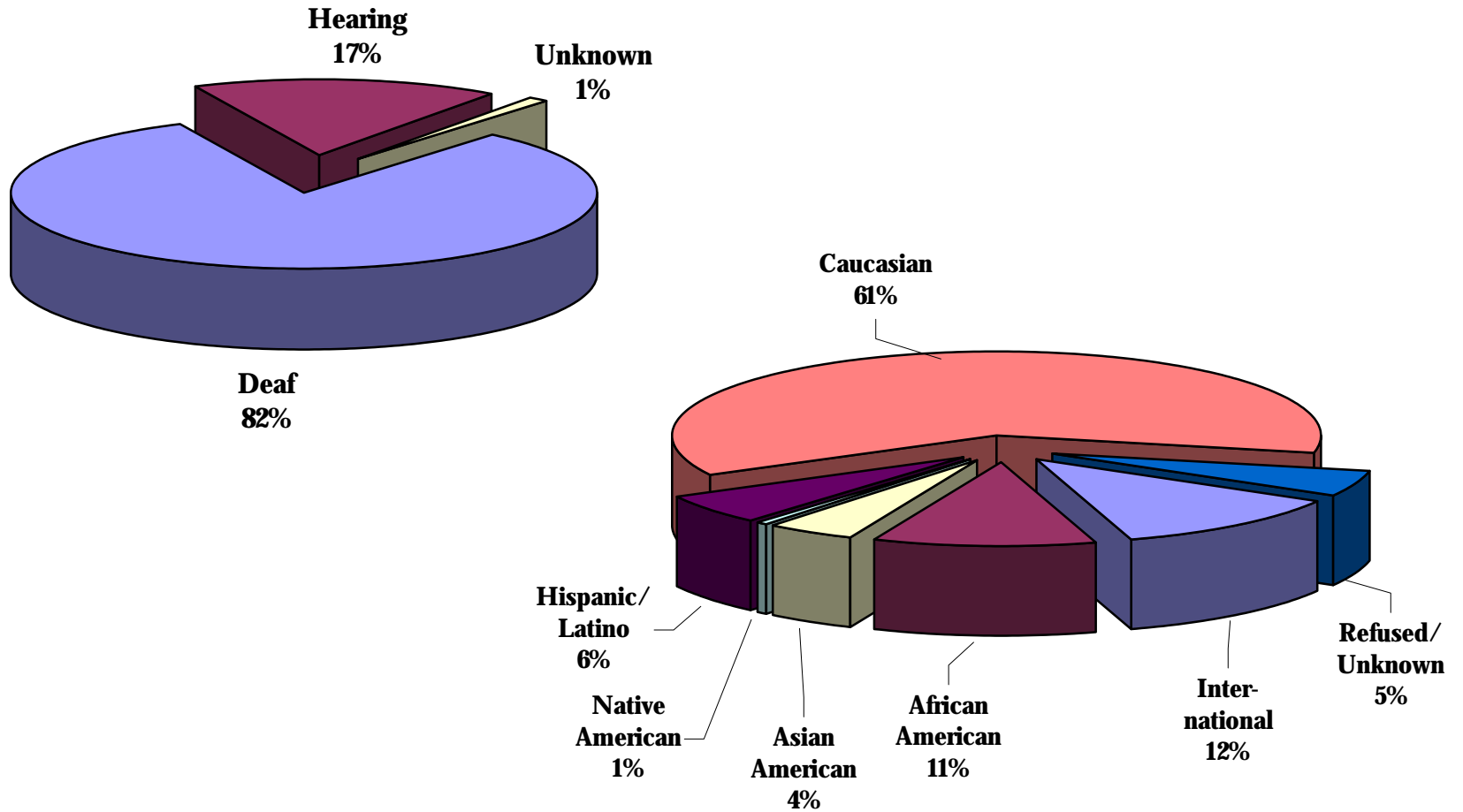
**TABLE 3: DEAF/HEARING AND RACIAL/ETHNIC CHARACTERISTICS  
OF FALL 2001 ENROLLMENT\***

	Deaf	Hearing	Unknown	Inter- national	African American	Asian American	Native American	Hispanic/ Latino	Caucasian	Refused/ Unknown
Freshman	446	1	4	66	58	23	2	40	247	15
Sophomores	219	2	2	20	28	11	2	12	145	5
Juniors	204	4	4	26	19	9	1	12	135	10
Seniors	248	1	1	24	22	13	1	16	160	14
Second Degree	11	0	0	3	0	2	0	0	6	0
Undergraduate Special	28	8	0	1	8	0	0	1	25	1
Exchange	0	1	0	0	0	0	0	0	0	1
Visiting	4	9	0	0	1	1	0	1	9	1
International Interns	6	0	0	6	0	0	0	0	0	0
English Language Institute	21	0	0	19	0	0	0	0	1	1
<b>Undergraduate Total</b>	<b>1,187</b>	<b>26</b>	<b>11</b>	<b>165</b>	<b>136</b>	<b>59</b>	<b>6</b>	<b>82</b>	<b>728</b>	<b>48</b>
Masters	85	146	2	20	28	5	0	7	156	17
Educational Specialist	0	0	0	0	0	0	0	0	0	0
Doctoral	29	82	2	4	14	8	0	5	73	9
Certificate	1	8	0	0	0	0	0	0	6	3
Graduate Special	22	12	1	5	2	0	0	0	26	2
International Interns	0	0	0	0	0	0	0	0	0	0
<b>Graduate Total</b>	<b>137</b>	<b>248</b>	<b>5</b>	<b>29</b>	<b>44</b>	<b>13</b>	<b>0</b>	<b>12</b>	<b>261</b>	<b>31</b>
<b>TOTAL</b>	<b>1,324</b>	<b>274</b>	<b>16</b>	<b>194</b>	<b>180</b>	<b>72</b>	<b>6</b>	<b>94</b>	<b>989</b>	<b>79</b>

\* Numbers do not include extension students.



**FIGURE 1: DEAF/HEARING AND RACIAL/ETHNIC DISTRIBUTION OF FALL 2001 ENROLLMENT\***



6

\* Numbers do not include extension students.

**TABLE 4: FALL ENROLLMENT HISTORY  
BY RACIAL/ETHNIC DISTRIBUTION\*  
1990-2001**

	1990	1991	1992	1993	1994	1995	1996	1997	1998	1999	2000	2001
<b>Undergraduate</b>												
International	14%	15%	16%	11%	11%	13%	13%	12%	13%	12%	13%	13%
African-American	7%	7%	7%	9%	9%	10%	10%	11%	11%	10%	10%	11%
Asian-American	1%	2%	2%	2%	4%	4%	4%	4%	4%	4%	5%	5%
Native-American	0%	0%	0%	1%	1%	1%	1%	1%	1%	1%	1%	1%
Hispanic/Latino	4%	4%	3%	5%	6%	5%	5%	6%	7%	6%	6%	7%
Caucasian	73%	71%	69%	70%	67%	65%	63%	62%	61%	63%	60%	59%
Refused/Unknown	0%	1%	2%	3%	3%	3%	3%	4%	4%	5%	6%	4%
<b>Graduate</b>												
International	10%	11%	9%	10%	8%	8%	9%	6%	5%	4%	4%	7%
African-American	5%	5%	6%	7%	7%	8%	8%	9%	8%	8%	8%	11%
Asian-American	1%	1%	2%	2%	1%	1%	2%	2%	2%	2%	2%	3%
Native-American	0%	0%	0%	0%	1%	0%	0%	0%	1%	0%	0%	0%
Hispanic/Latino	2%	2%	2%	2%	3%	3%	4%	4%	4%	4%	3%	3%
Caucasian	80%	78%	79%	78%	78%	72%	68%	69%	75%	78%	72%	67%
Refused/Unknown	2%	1%	2%	2%	3%	8%	10%	11%	5%	4%	10%	8%
<b>TOTAL ENROLLMENT</b>												
International	14%	15%	15%	11%	10%	12%	12%	11%	11%	10%	10%	12%
African-American	6%	7%	7%	8%	9%	9%	10%	10%	10%	9%	10%	11%
Asian-American	1%	2%	2%	2%	3%	3%	4%	4%	4%	3%	4%	4%
Native-American	0%	0%	0%	1%	1%	1%	1%	1%	1%	1%	1%	1%
Hispanic/Latino	3%	3%	3%	4%	5%	5%	5%	5%	6%	6%	6%	6%
Caucasian	74%	72%	71%	71%	69%	66%	64%	64%	65%	67%	62%	61%
Refused/Unknown	1%	1%	2%	3%	3%	4%	5%	6%	4%	4%	7%	5%

\* Numbers do not include extension students.



**TABLE 6: FALL 2001 INTERNATIONAL ENROLLMENT BY COUNTRY\***

	Undergraduate			Graduate			ELI **		
Argentina	0	1	0	Kenya	1	0	0		
Austria	0	0	0	Korea, Republic of	1	0	2		
Barbados	0	0	2	Kuwait	0	0	1		
Belgium	3	0	0	Latvia	0	0	0		
Bermuda	0	0	1	Lebanon	1	0	1		
Botswana	1	0	1	Malaysia	1	0	0		
Brazil	1	1	1	Mexico	0	0	0		
Burundi	0	0	0	Mongolia	0	1	0		
Cameroon	0	1	0	Netherlands	4	0	0		
Canada	59	4	0	New Zealand	0	1	0		
China	7	2	1	Nigeria	1	1	0		
Colombia	0	0	0	Norway	1	1	0		
Congo	1	0	0	Pakistan	0	0	0		
Croatia	2	0	0	Panama	0	0	0		
Czech Republic	1	1	0	Philippines	2	1	0		
Ethiopia	0	0	0	Russian Federation	2	0	0		
Finland	1	0	0	Rwanda	0	0	0		
France	2	0	0	Saudi Arabia	1	0	1		
Germany	1	0	0	Singapore	1	0	0		
Guatemala	0	0	0	Slovakia	0	0	0		
Haiti	1	0	0	South Africa	2	0	0		
Hong Kong	1	0	0	Spain	1	0	1		
Iceland	1	0	0	Sri Lanka	0	0	0		
India	3	1	1	Sweden	5	0	1		
Indonesia	1	0	0	Switzerland	1	0	0		
Iran (Islamic Republic C	0	0	0	Taiwan, Province of Chin	4	1	0		
Ireland	1	0	1	Thailand	2	0	0		
Israel	2	1	0	Trinidad and Tobago	0	1	0		
Italy	1	0	0	Uganda	0	1	0		
Jamaica	1	0	0	United Arab Emirates	2	0	1		
Japan	4	3	2	United Kingdom	0	0	0		
Jordan	0	0	0	Uzbekistan	1	0	0		
<b>TOTAL STUDENTS</b>					<b>129</b>	<b>23</b>	<b>18</b>		
<b>TOTAL COUNTRIES</b>					<b>40</b>	<b>17</b>	<b>15</b>		

\* The countries of origin for ten undergraduates and one ELI student are unknown.

\*\* English Language Institute

**TABLE 7: FALL 2001 FULL- AND PART-TIME  
ENROLLMENT BY GENDER**

	<b>Full-time</b>		<b>Part-time</b>	
	<b>Women</b>	<b>Men</b>	<b>Women</b>	<b>Men</b>
Freshman	229	211	5	6
Sophomores	105	106	4	8
Juniors	113	92	2	5
Seniors	123	107	9	11
Second Degree	5	4	0	2
Undergraduate Special	1	1	20	14
Exchange	1	0	0	0
Visiting	10	1	1	1
International Interns	1	0	2	3
English Language Institute	6	13	1	1
<b>Undergraduate Total</b>	<b>594</b>	<b>535</b>	<b>44</b>	<b>51</b>
Masters	180	27	21	5
Educational Specialist	0	0	0	0
Doctoral	65	11	26	11
Certificate	0	1	8	0
Graduate Special	14	3	12	6
International Interns	0	0	0	0
<b>Graduate Total</b>	<b>259</b>	<b>42</b>	<b>67</b>	<b>22</b>
<b>TOTAL</b>	<b>853</b>	<b>577</b>	<b>111</b>	<b>73</b>

**TABLE 8: FALL 2001 UNDERGRADUATE MAJORS  
BY DEPARTMENT**

<b>College of Liberal Arts, Sciences, and Technologies</b>		<b>Graduate School and Professional Programs</b>	
Art	51	Accounting	25
Biology	35	American Sign Language	14
Chemistry	6	Business Administration	33
Communication Arts	44	Computer Information Systems	15
Computer Science	20	Economics & Finance	9
Deaf Studies	21	Education	57
Digital Media	0	Entrepreneurial Studies	2
English	16	Physical Education	19
Family & Consumer Studies	24	Recreation & Leisure Studies	13
French	3		
Government	26	<b>Subtotal</b>	<b>187</b>
History	27		
Mathematics	11		
Philosophy	4		
Psychology	39		
Self-Directed: Religion	1		
Social Work	30		
Sociology	17		
Spanish	7		
Television & Photography	14		
Theatre Arts	11		
<b>Subtotal</b>	<b>407</b>		
<hr/> <b>TOTAL</b>		<hr/> <b>594</b> <hr/>	

**TABLE 9: FALL 2001 GRADUATE MAJORS**

<b>College of Liberal Arts, Science, and Technologies</b>		<b>Graduate School and Professional Programs (cont'd)</b>	
<b>Department of Government and History</b>		<b>Counseling</b>	
Deaf History, Certificate	1	Mental Health Counseling, M.A.	18
<b>Department of Psychology</b>		Community Counseling, M.A.	2
Clinical Psychology, Ph.D.	28	School Counseling and Guidance, M.A.	10
Clinical Psychology, M.A.	1	<b>Education</b>	
Developmental Psychology, M.A.	6	Advanced Studies Education, M.A.	2
School Psychology, M.A. / Specialist	12	Deaf Education, Ph.D.	18
<b>Department of Social Work</b>		Deaf Education, Ed.S.	0
Social Work, M.S.W.	42	Family Centered Early Education, Education, M.A.	17
<b>Subtotal</b>		Elementary Education, M.A.	23
	<b>90</b>	Secondary Education, M.A.	7
		Multiple Disabilities Ed., M.A.	12
		Special Programs in Deafness, M.A.	6
		<b>Educational Foundations and Research</b>	
<b>Graduate School and Professional Programs</b>		Integrated Technology, Certificate	8
<b>Administration and Supervision</b>		<b>Linguistics and Interpretation</b>	
Administration, M.S.	11	Linguistics, M.A.	15
Instructional Supervision, Ed.S.	0	Interpretation, M.A.	22
Special Education Admin., Ph.D.	29	<b>Physical Education and Recreation</b>	
Leadership, Certificate	0	Leisure Services Admin, M.S.	4
Management, Certificate	0	<b>Subtotal</b>	
<b>Audiology and Speech-Language Pathology</b>			<b>264</b>
Audiology, Au.D.	38		
Speech-Language Pathology, M.A.	22		
<b>TOTAL</b>		<b>354</b>	

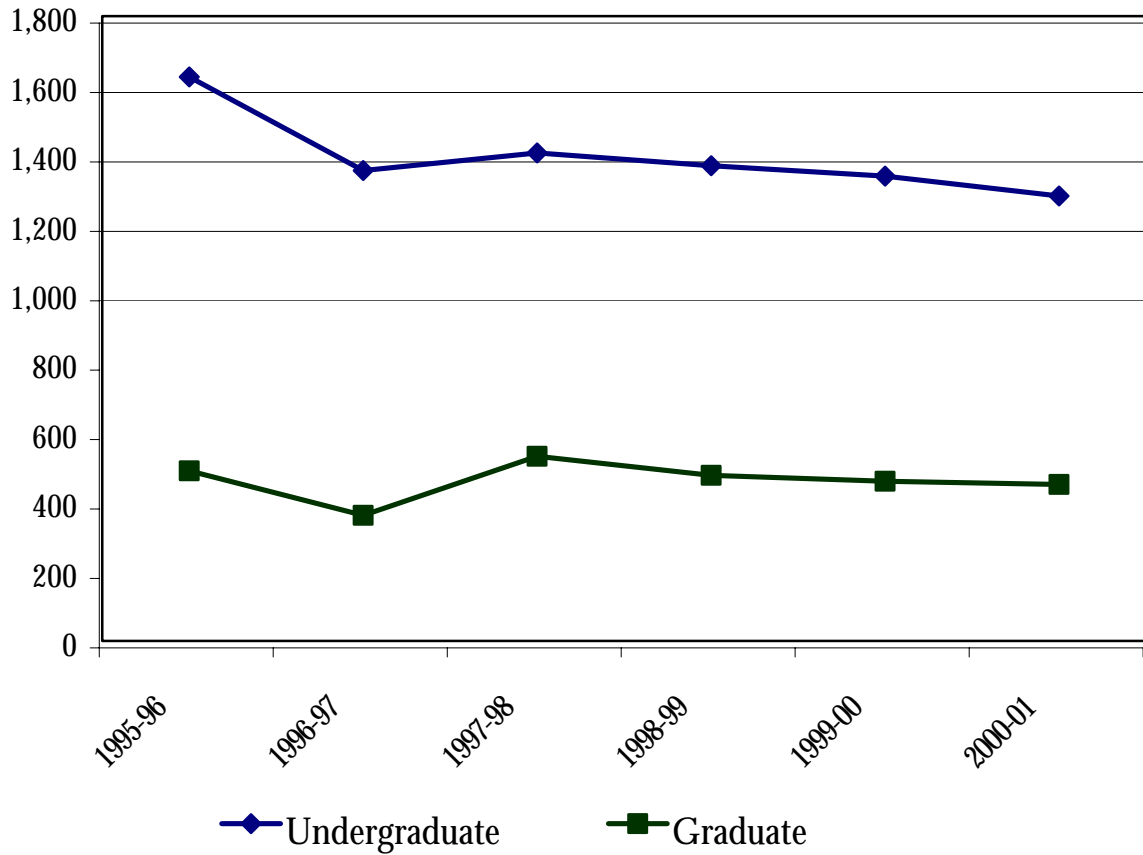
**TABLE 10: TOTAL ANNUAL ENROLLMENT  
ACADEMIC YEAR 2000-2001**

	<b>Fall 2000</b>	<b>Spring 2001</b>	<b>Summer 2001</b>
Freshmen	537	352	34
Sophomores	210	222	39
Juniors	202	215	68
Seniors	233	294	97
Second Degree	6	8	2
Undergraduate Special	41	46	5
Exchange	0	0	0
Visiting	6	9	0
Undergraduate Extension	63	63	0
International Interns	0	1	0
English Language Institute	23	23	2
<b>Undergraduate Total</b>	<b>1,321</b>	<b>1,233</b>	<b>247</b>
Masters	253	243	67
Educational Specialist	2	0	0
Doctoral	103	101	51
Certificate	10	48	3
Graduate Special	63	34	19
Graduate Extension	194	194	0
International Interns	0	0	0
<b>Graduate Total</b>	<b>625</b>	<b>620</b>	<b>140</b>
<b>Professional Studies</b>	<b>93</b>	<b>108</b>	<b>303</b>
<b>TOTAL</b>	<b>2,039</b>	<b>1,961</b>	<b>690</b>



**TABLE 11: ANNUAL UNDUPLICATED HEADCOUNT ENROLLMENT ACADEMIC YEARS 1995 TO 2001\***

	<b>1995-96</b>	<b>1996-97</b>	<b>1997-98</b>	<b>1998-99</b>	<b>1999-00</b>	<b>2000-01</b>
<b>Undergraduate</b>	1,625	1,355	1,406	1,369	1,339	1,282
<b>Graduate</b>	490	362	532	477	460	451



\* This is an unduplicated count of the total number of students by level enrolled during the 12-month reporting period in any courses that can lead to a degree or other formal award.

**TABLE 12: ANNUAL INSTITUTIONAL ACTIVITY  
ACADEMIC YEARS 1997-2001**

	<b>1997-98</b>	<b>1998-99</b>	<b>1999-00</b>	<b>2000-01</b>
<b>Institutional and Degree Credit Hours</b>				
Undergraduate	40,042	39,408	34,558	37,332
Graduate	10,269	10,280	9,215	9,078
<b>Total</b>	<b>50,311</b>	<b>49,688</b>	<b>43,773</b>	<b>46,410</b>

**Student Support Contact Hours**

Tutorial Services	14,385	9,375	6,318	7,970
Academic Advising	10,400	12,000	12,500	12,110
Career Center	6,575	6,590	7,450	9,529
Students with Disabilities	7,300	7,000	7,300	7,700
Counseling Services	17,994	17,400	13,723	20,880
Student Affairs	77,597	75,250	76,807	102,856
<b>Total</b>	<b>134,251</b>	<b>127,615</b>	<b>124,098</b>	<b>161,045</b>

**College for Continuing Education Participants**

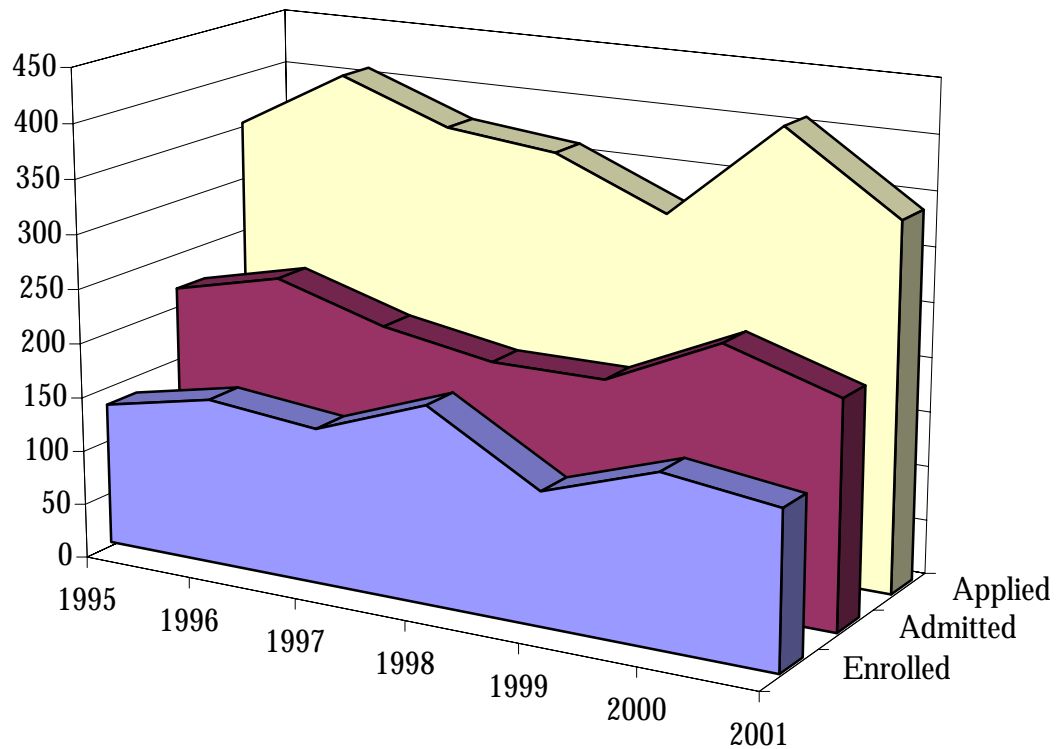
Extension Online Programs and Continuing Education Units/CEUs	868	1,036	1,063	610
Center for Global Education	4,617	1,097	1,434	1,495
Summer, Evening, and Weekend Programs	1,670	1,996	1,924	1,293
Conferences, Training, and Program Support	1,604	4,903	5,337	5,262
Regional Centers				
Flagler College, FL	5,399	3,471	6,093	5,127
Johnson County Community College, KS	11,769	7,097	4,202	5,638
Kapiolani Community College, HI	3,026	3,577	2,900	3,865
Northern Essex Community College, MA	5,758	5,126	5,287	4,382
Ohlone College, CA	3,852	4,055	4,338	5,766
<b>Total</b>	<b>38,563</b>	<b>32,358</b>	<b>32,578</b>	<b>33,438</b>

# **Admissions**

**TABLE 13: FALL 2001 UNDERGRADUATE ADMISSIONS SUMMARY  
AND HISTORY OF FALL APPLICATIONS, ADMISSIONS, AND  
REGISTRATIONS 1995-2001**

	<b>Applied</b>	<b>Admitted</b>	<b>Enrolled</b>	<b>Enrollment Yield</b>
<b>2001</b>				
New Freshmen	n/a	288	220	76%
Transfers	n/a	99	60	61%
Degree-seeking	533	387	280	72%
Special/Others	69	61	45	74%
<b>TOTAL</b>	<b>602</b>	<b>448</b>	<b>325</b>	<b>73%</b>
<hr/> <hr/>				
<b>2000</b>				
Degree-seeking	609	433	317	73%
Special/Others	39	35	28	80%
<b>TOTAL</b>	<b>648</b>	<b>468</b>	<b>345</b>	<b>74%</b>
<b>1999</b>				
Degree-seeking	642	479	324	68%
Special/Others	48	40	22	55%
<b>TOTAL</b>	<b>690</b>	<b>519</b>	<b>346</b>	<b>67%</b>
<b>1998</b>				
Degree-seeking	554	427	331	78%
Special/Others	44	44	36	82%
<b>TOTAL</b>	<b>598</b>	<b>471</b>	<b>367</b>	<b>78%</b>
<b>1997</b>				
Degree-seeking	688	514	304	59%
Special/Others	74	65	25	38%
<b>TOTAL</b>	<b>762</b>	<b>579</b>	<b>329</b>	<b>57%</b>
<b>1996</b>				
Degree-seeking	733	499	251	50%
Special/Others	70	70	31	44%
<b>TOTAL</b>	<b>803</b>	<b>569</b>	<b>282</b>	<b>50%</b>
<b>1995</b>				
Degree-seeking	738	525	294	56%
Special/Others	76	75	31	41%
<b>TOTAL</b>	<b>814</b>	<b>600</b>	<b>325</b>	<b>54%</b>

**TABLE 14: FALL GRADUATE DEGREE-SEEKING APPLICATIONS, ADMISSIONS, AND REGISTRATIONS 1995-2001**

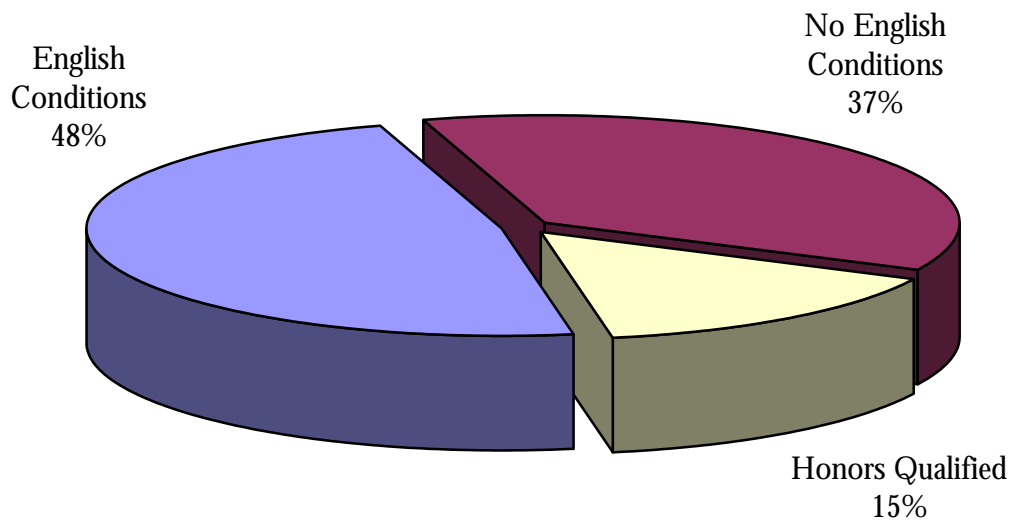


	<b>1995</b>	<b>1996</b>	<b>1997</b>	<b>1998</b>	<b>1999</b>	<b>2000</b>	<b>2001</b>
<b>Enrolled</b>	131	152	142	180	121	156	143
<b>Admitted</b>	214	238	208	191	191	239	207
<b>Applied</b>	350	406	369	358	315	406	336

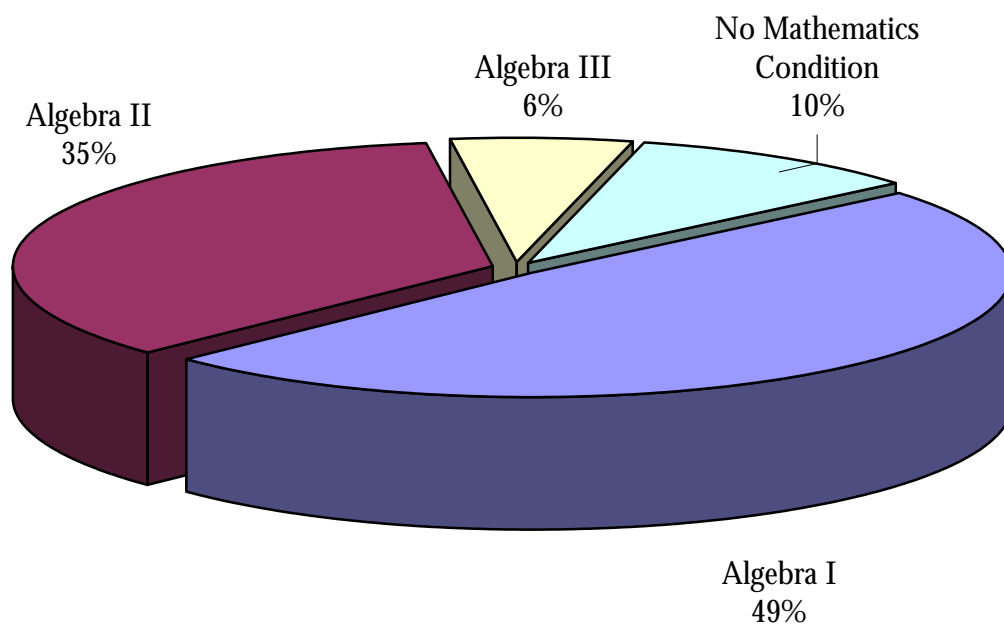
**TABLE 15: FALL 2001 NEW DEGREE-SEEKING UNDERGRADUATE STUDENTS BY DEMOGRAPHIC CHARACTERISTICS**

<b>Age</b>			<b>Deafness in Family</b>		
16	1	1%	Deaf Family Member(s)	70	25%
17	15	5%	Both Parents	47	17%
18	94	34%	One Parent	8	3%
19	61	22%	Sibling(s)	56	20%
20	29	10%			
21	21	8%			
22	13	5%	<b>Ethnic Background</b>		
23-25	21	7%	International	35	13%
26-29	11	4%	African-American	36	13%
30 and over	14	5%	Asian-American	9	3%
			Native American	1	1%
			Hispanic/Latino	22	8%
<b>Sex</b>			Caucasian	166	59%
Men	131	47%	Refused/Unknown	11	4%
Women	149	53%			

**FIGURE 2: FALL 2001 NEW DEGREE-SEEKING UNDERGRADUATE STUDENTS BY ENGLISH AND MATHEMATICS PLACEMENT TEST PERFORMANCE**



**English Placement Test Performance**



**Mathematics Placement Test Performance**

**TABLE 16: FALL 2001 NEW DEGREE-SEEKING GRADUATE STUDENTS BY DEMOGRAPHIC CHARACTERISTICS AND PROGRAMS**

<b>Age</b>			<b>Hearing Status</b>		
20-29	96	67%	Deaf/Hard of Hearing	47	33%
30-39	31	22%	Hearing	94	66%
40-49	10	7%	Refused/Unknown	2	1%
50 and over	6	4%			
<b>Sex</b>			<b>Ethnic Background</b>		
Men	16	11%	International	18	13%
Women	127	89%	African-American	17	12%
			Asian-American	5	3%
			Native-American	0	0%
			Hispanic/Latino	3	2%
			Caucasian	84	59%
			Refused/Unknown	16	11%

**College of Liberal Arts, Sciences, and Technologies**

History	1	1%
Psychology	13	9%
Social Work	16	11%

**Graduate School and Professional Programs**

Administration & Supervision	14	10%
Audiology & Speech-Language		
Pathology	23	16%
Counseling	18	13%
Education	29	20%
Educational Foundations & Research	9	6%
Linguistics and Interpreting	18	13%
Physical Education & Recreation	2	1%

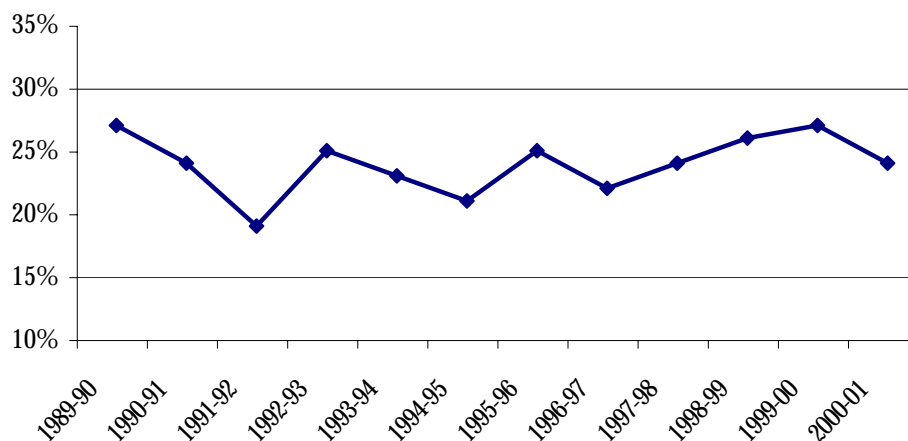


# **Graduation, Persistence and Attrition**

**TABLE 17: UNDERGRADUATE ONE-YEAR GRADUATION, ATTRITION, AND PERSISTENCE**

	<b>Enrolled Fall 2000</b>	<b>Graduated</b>	<b>Dismissed</b>	<b>Withdrew</b>	<b>Persisted to Fall 2001</b>
<b>TOTAL</b>	<b>1,182</b>	<b>131</b>	<b>28</b>	<b>254</b>	<b>769</b>
<b>Percentage</b>		<b>11%</b>	<b>2%</b>	<b>21%</b>	<b>65%</b>
<i>By Class</i>					
Freshmen	<b>498</b>	0 0%	18 4%	158 32%	322 65%
Sophomores	<b>212</b>	0 0%	6 3%	37 17%	169 80%
Juniors	<b>223</b>	7 3%	3 1%	27 12%	186 83%
Seniors	<b>241</b>	120 50%	1 1%	30 12%	90 37%
Second Degree	<b>8</b>	4 50%	0 0%	2 25%	2 25%
<i>By Gender</i>					
Men	<b>555</b>	48 9%	18 3%	120 22%	369 66%
Women	<b>627</b>	83 13%	10 2%	134 21%	400 64%
<i>By Ethnic Background</i>					
International	<b>118</b>	20 17%	6 5%	0 0%	92 78%
African-American	<b>129</b>	7 5%	5 4%	38 29%	79 61%
Native American	<b>8</b>	1 13%	0 0%	2 25%	5 63%
Asian-American	<b>66</b>	9 14%	1 2%	14 21%	42 64%
Hispanic/Latino	<b>77</b>	7 9%	1 1%	18 23%	51 66%
Caucasian	<b>742</b>	80 11%	15 2%	177 24%	470 63%
Refused/Unknown	<b>42</b>	7 17%	0 0%	5 12%	30 71%

**FIGURE 3: UNDERGRADUATE ONE-YEAR ATTRITION TRENDS 1989-2001**



**TABLE 18: UNDERGRADUATE ONE-YEAR ATTRITION BY CLASS, GENDER, AND RACE/ETHNICITY 1989-2001**

	1989-90	1990-91	1991-92	1992-93	1993-94	1994-95	1995-96	1996-97	1997-98	1998-99	1999-00	2000-01
<b>TOTAL</b>	<b>27%</b>	<b>24%</b>	<b>19%</b>	<b>25%</b>	<b>23%</b>	<b>21%</b>	<b>25%</b>	<b>22%</b>	<b>24%</b>	<b>26%</b>	<b>27%</b>	<b>23%</b>
<i>By Class</i>												
Freshmen	32%	31%	28%	36%	34%	33%	38%	35%	38%	36%	36%	36%
Sophomores	21%	16%	17%	22%	15%	19%	22%	19%	20%	16%	21%	20%
Juniors	10%	11%	11%	12%	11%	11%	13%	13%	13%	20%	18%	13%
Seniors	16%	10%	9%	9%	6%	6%	10%	11%	12%	19%	23%	13%
Second Degree	N/A	N/A	N/A	N/A	N/A	N/A	N/A	N/A	N/A	N/A	46%	25%
<i>By Gender</i>												
Men	26%	24%	19%	19%	25%	24%	27%	26%	25%	30%	29%	25%
Women	22%	19%	20%	20%	21%	19%	23%	19%	22%	22%	25%	23%
<i>By Ethnic Background</i>												
Caucasians	24%	21%	19%	25%	23%	21%	25%	23%	23%	25%	28%	26%
Non-white	29%	27%	28%	24%	32%	24%	26%	24%	28%	30%	30%	21%

**TABLE 19: LONG-TERM RETENTION RATE OF ENTERING UNDERGRADUATE CLASSES 1995-2000**

	Number originally enrolled	Retained						Graduated		
		After 1 year	After 2 years	After 3 years	After 4 years	After 5 years	After 6 years	Within 4 years	Within 5 years	Within 6 years
<i>All Students</i>										
<b>1995</b>	291	60%	45%	39%	27%	16%	10%	9%	18%	25%
<b>1996</b>	237	62%	46%	33%	28%	16%		6%	14%	
<b>1997</b>	293	66%	45%	40%	29%			6%		
<b>1998</b>	331	60%	47%	40%						
<b>1999</b>	322	63%	49%							
<b>2000</b>	313	65%								
<i>First-time Students</i>										
<b>1995</b>	229	60%	44%	41%	28%	18%	12%	6%	16%	23%
<b>1996</b>	183	60%	45%	33%	31%	17%		4%	13%	
<b>1997</b>	215	67%	41%	40%	30%			3%		
<b>1998</b>	230	63%	49%	43%						
<b>1999</b>	254	61%	47%							
<b>2000</b>	241	66%								
<i>Transfer Students</i>										
<b>1995</b>	62	59%	48%	34%	21%	11%	3%	19%	26%	31%
<b>1996</b>	54	70%	52%	35%	20%	13%		11%	19%	
<b>1997</b>	78	63%	55%	40%	24%			15%		
<b>1998</b>	101	54%	42%	35%						
<b>1999</b>	68	69%	59%							
<b>2000</b>	72	61%								

**TABLE 20: DEGREES AWARDED  
ACADEMIC YEARS 1989-2000**

	<b>Associates</b>	<b>Bachelors</b>	<b>Masters</b>	<b>Specialists</b>	<b>Doctoral</b>	<b>TOTAL</b>
<b>1989-90</b>	5	177	87	1	2	<b>272</b>
<b>1990-91</b>	5	204	106	10	4	<b>329</b>
<b>1991-92</b>	13	230	95	4	3	<b>345</b>
<b>1992-93</b>	7	249	81	6	1	<b>344</b>
<b>1993-94</b>	8	227	113	8	6	<b>362</b>
<b>1994-95</b>	6	231	110	9	9	<b>365</b>
<b>1995-96</b>	8	185	108	7	12	<b>320</b>
<b>1996-97</b>	0	201	102	8	5	<b>316</b>
<b>1997-98</b>	0	174	98	8	5	<b>285</b>
<b>1998-99</b>	0	146	125	8	7	<b>286</b>
<b>1999-00</b>	0	155	129	6	6	<b>296</b>
<b>2000-01*</b>	0	142	104	6	11	<b>263</b>

\* Based on data provided to IPEDS, Fall 2001.

**TABLE 21: DEGREES AWARDED  
BY GENDER AND RACE/ETHNICITY  
ACADEMIC YEAR 2000-2001\***

	<b>Bachelors</b>	<b>Masters</b>	<b>Specialists</b>	<b>Doctoral</b>
Men	52	22	0	2
Women	90	82	6	9
<i>By Ethnic Background</i>				
International	20	5	0	1
African-American	13	2	0	0
Asian-American	6	1	0	0
Native American	2	2	0	0
Hispanic/Latino	8	6	0	0
Caucasian	86	86	6	8
Refused/Unknown	7	2	0	2
<b>TOTAL</b>	<b>142</b>	<b>104</b>	<b>6</b>	<b>11</b>

\* Based on data provided to IPEDS, Fall 2001.

**TABLE 22: UNDERGRADUATE DEGREES BY DISCIPLINE  
ACADEMIC YEAR 2000-2001**

<b>Bachelor of Arts</b>		<b>Bachelor of Science</b>	
American Sign Language	6	Accounting	0
Art	7	Business Administration	9
Biology	5	Computer Information Systems	13
Chemistry	3	Economics	1
Communication Arts	15	Economics & Finance	2
Computer Science	3	Entrepreneurial Studies	0
Deaf Studies	8	Family & Consumer Studies	11
Education	11	Physical Education	6
English	5	Recreation & Leisure Studies	3
Government	4	Self-Directed: Education & English, Chinese	1
History	0	Self-Directed: Romance Language Studies	1
Journalism	2		
Mathematics	1	<b>Subtotal</b>	<b>47</b>
Philosophy	2		
Physics	0		
Psychology	19		
Sign Communication	0		
Social Work	14		
Sociology	2		
Spanish	1		
Television & Photography	2		
Theater Arts	2		
<b>Subtotal</b>	<b>112</b>		
<hr/> <b>TOTAL*</b>		<hr/> <b>159</b> <hr/>	

\* Total excludes double majors.

**TABLE 23: GRADUATE DEGREES BY DISCIPLINE  
ACADEMIC YEAR 2000-2001**

<b>Master of Arts</b>		<b>Master of Social Work</b>	
Psychology	1	Social Work	17
Developmental Psychology	7		
Linguistics	6	<b>Subtotal</b>	<b>17</b>
Interpreting	7		
Mental Health Counseling	7	<b>Specialist</b>	
School Counseling & Guidance	12	Administration & Supervision	0
Community Counseling	3	Educational Specialist	0
Rehabilitation Counseling	0	School Psychology	6
Education			
Advanced Studies in Education	7	<b>Subtotal</b>	<b>6</b>
Family-centered Early Education	3		
Elementary Education	8	<b>Doctor of Philosophy</b>	
Multiple Disabilities	3	Administration & Supervision	0
Non-degree Teacher Certification	0	Clinical Psychology	7
Secondary	11	Deaf Education	1
Special Education in Deafness	4	Special Education Admin	5
<b>Subtotal</b>	<b>79</b>	<b>Subtotal</b>	<b>13</b>
<b>Master of Science</b>			
Administration	2		
Audiology	0		
Speech-Language Pathology	8		
<b>Subtotal</b>	<b>10</b>		
<hr/> <b>TOTAL</b>		<hr/> <b>125</b> <hr/>	