



THE COVER symbolizes the beginnings of a new era of education for deaf youth.

Design by Ellen Kidder
Idea by Pam Childs

CONTENTS

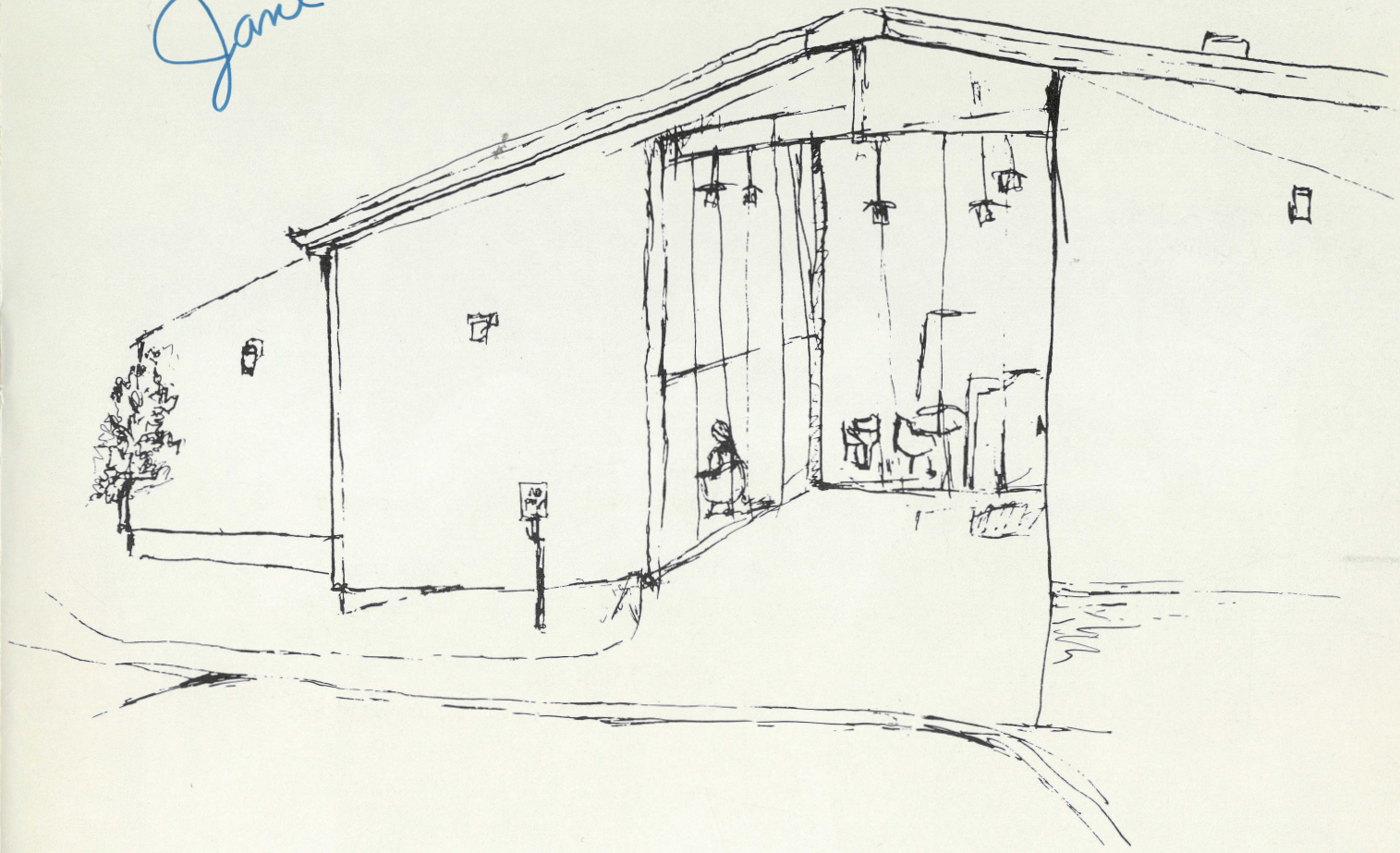
What I Think,
What I Feel page 8

Who I Am,
What I Do page 16

Where I Will Go,
What I Will Do page 42

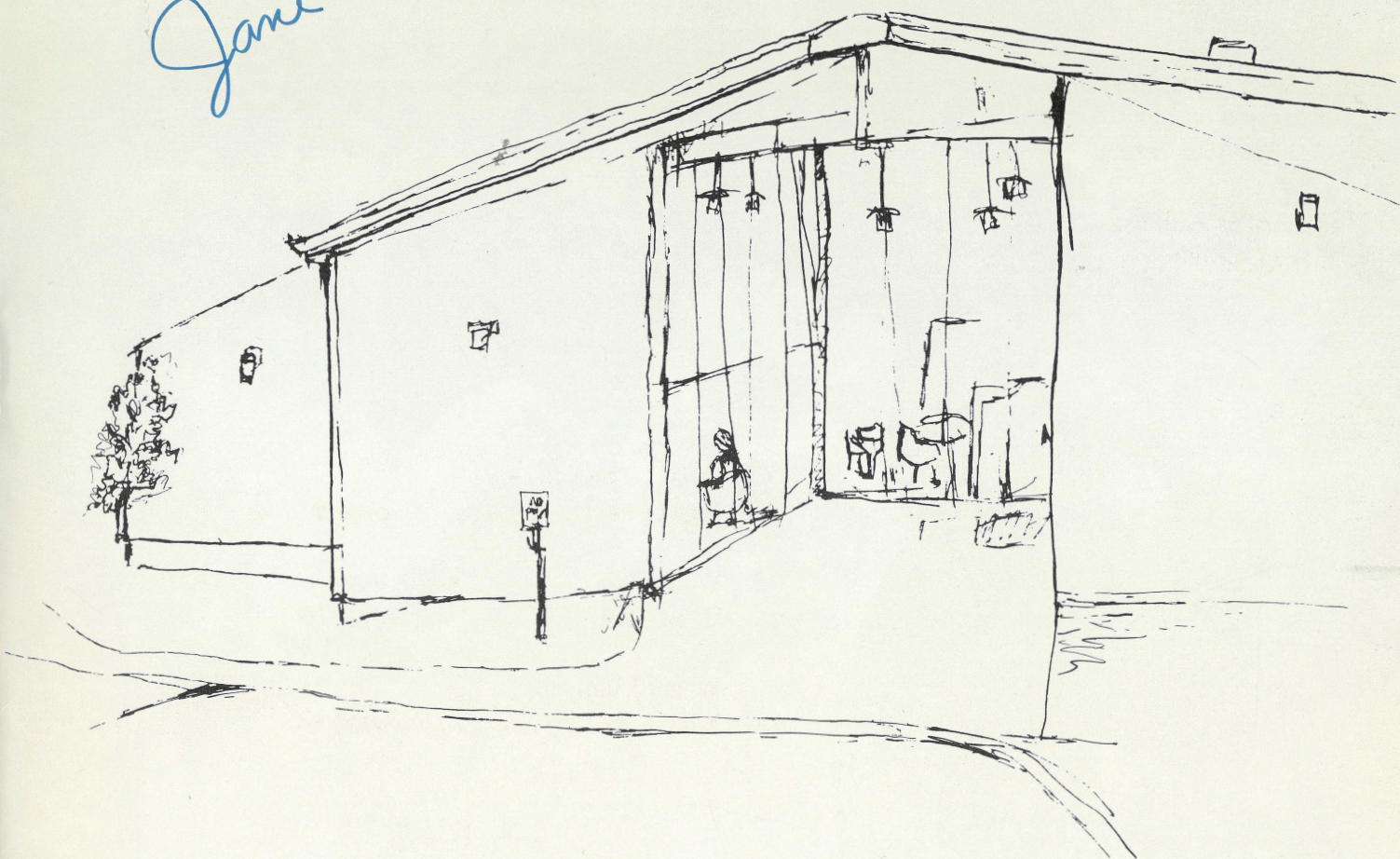
Model Secondary

James



School for the Deaf
at
Gallaudet College
Kendall Green
Washington D.C. 20002

Jane



School for the Deaf

at

Gallaudet College

Kendall Green

Washington D.C. 20002



Model Secondary



School for the Deaf

at

Gallaudet College

Kendall Green

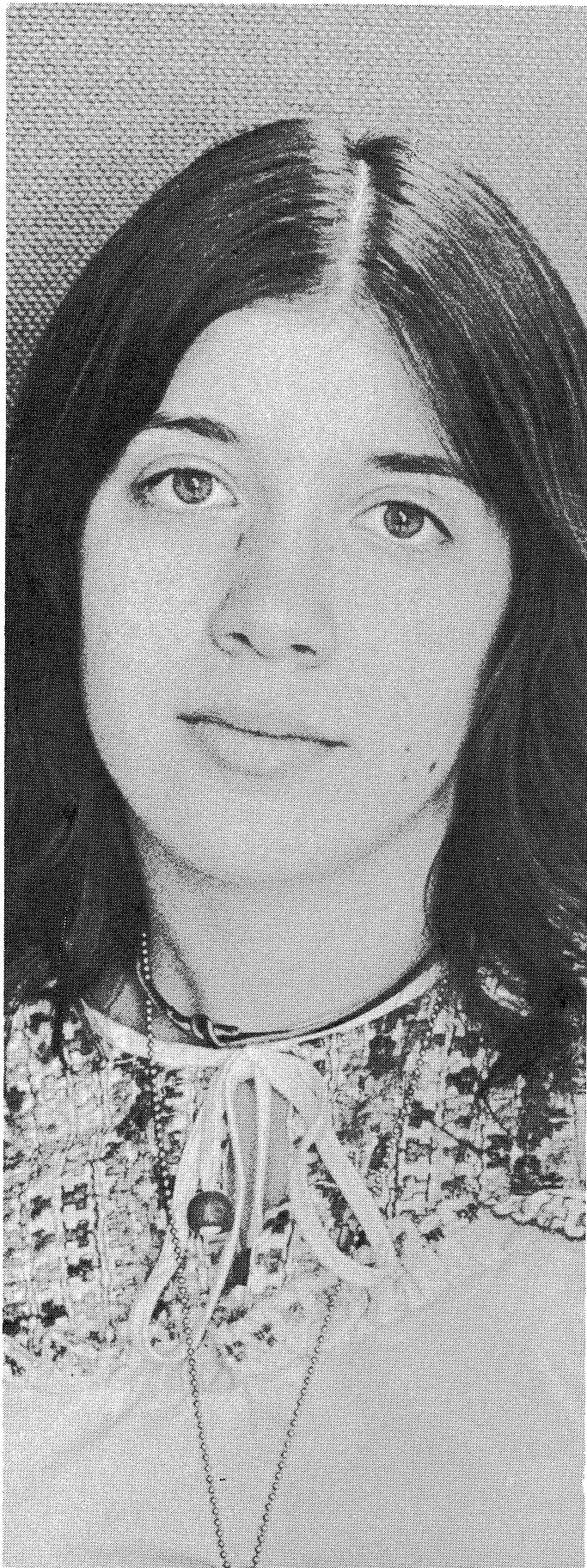
Washington D.C. 20002





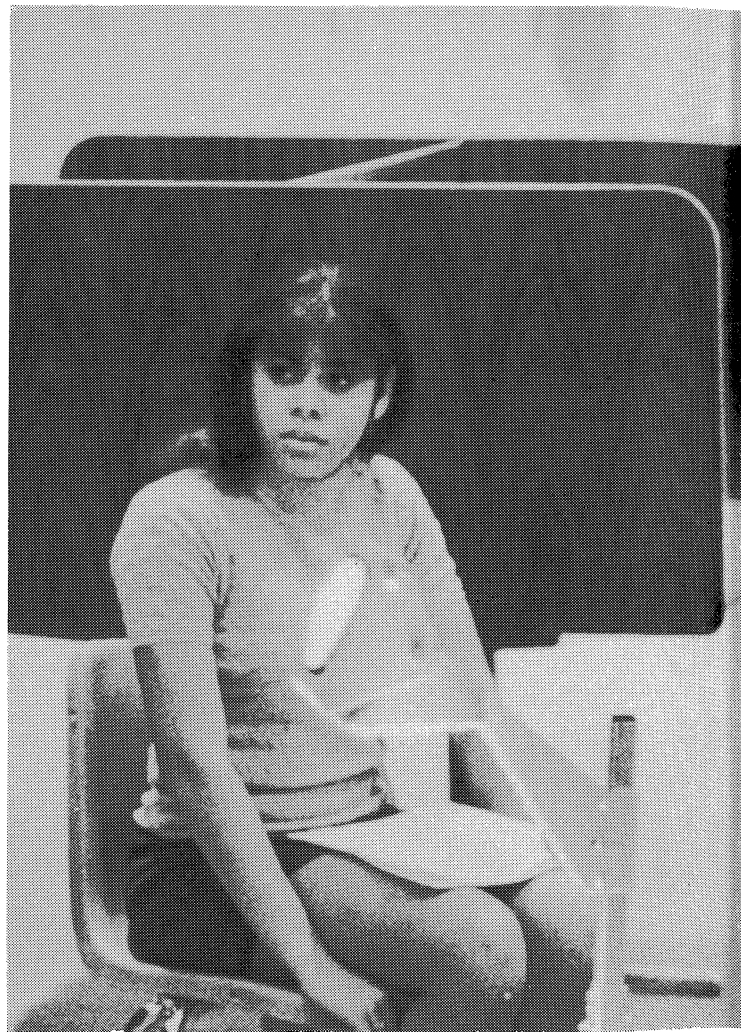
That's
what
education
means –
to be
able
to do
what
you've
never
done
before.

— George Herbert Palmer



MUSIC CAN'T MAKE

Music is beautiful;
But not for me,
Because I am totally deaf;
I am in the silent world
Full of deafness.



ME HEAR AGAIN

SHELLY BUTOWSKY

Music is beautiful;
But deafness locks music
Away from me forever - - -
Music is so gentle,
Deafness can only get some vibrations,
but - - - no words - - - so wordless for the deaf;
Music is away from my deaf ears for-ever - - ! !

Music is beautiful;
Deaf can feel the words
From the Goddess of Music,
They also wish that God would
Unblock their ears to let the
Music in their ears for-ever-ever ! !







What I Think, What I Feel

MSSD is a field of color,

bringing together shapes and

forms of exciting conversations,

sounds, motions, vibrations,

and warm feelings. MSSD is a

family, old and new friends,

staff and service people.

MSSD is glass and wood, sun-

shine, rain and mud, and snow.

When I'm away from MSSD I'm

empty, lonely and sad.

MSSD is life!

—Debbie Ware



THE GULLS ARE FLYING

In my mind . . . in my mind, I'm
thinking of the gulls flying
around.

And the waters are waving to
me.

When I am alone, I am
walking on the beach.

The cloud moves. It looks like
a tree.

I see the gulls. They are trying to
catch the fish.

And I look at them, they are
flying so high.

They are flying around.

Then in my mind . . . in my mind I'm
thinking of the clouds
move and the gulls are flying around
and flying around.

As I look at them, they are flying
so high and high.



IN OCTOBER

In October, I just wanted to
know where is Love?

People feel love in their hearts.

People who were walking down the
street, were holding hands when the
leaves were falling.

And they sat on the chair.

They talked to each other.

They kissed each other.

They feel so cold, when the
wind blows.

They saw the trees were beautiful in
color as they walked along.

In October, I just wanted to
know where is Love?

People feel love in their hearts

People who were walking down the
street, were holding hands when the
leaves were falling, again.

they talked to each other.

they kissed each other.

And they feel so cold, when the wind
blows.

They walked away down the street.

They walked away down the street.



SNOW

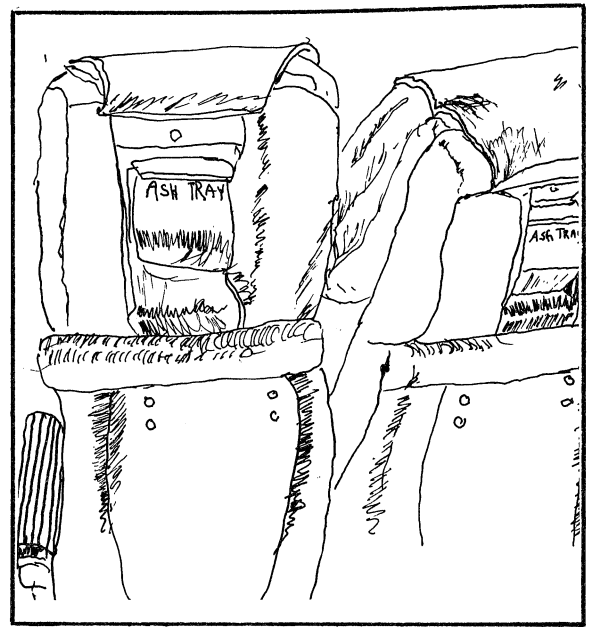
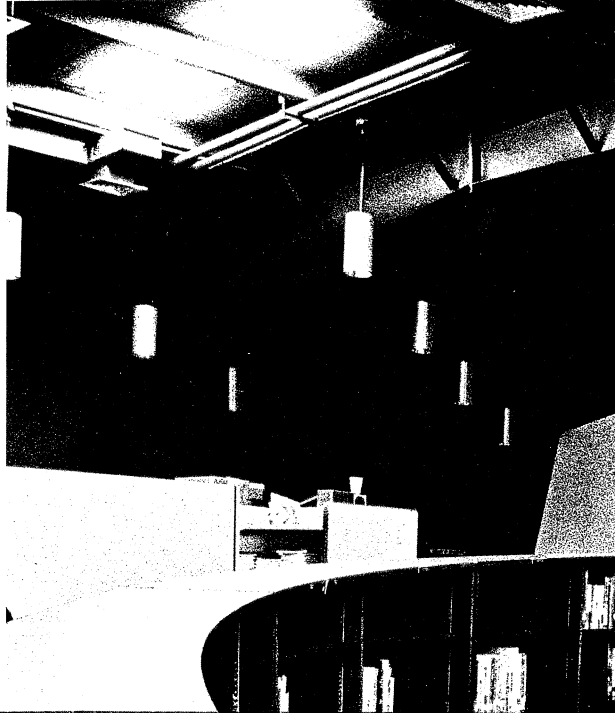
Snow, Snow.
All I want is the snow.
I sit by the window.
And I look up at the clouds
The clouds are turning gray.
That means the snow will come.
I see the people walking down the street.
In my dreams, I could see the snow
on the trees.
And I could sit on the sleigh and ride.
So I can see the snow falling everywhere.
And children are playing with the snow.
But I could hear the bells ringing.
Snow, Snow.
All I want is the snow.
I look up at the clouds.
The clouds are turning gray.
That means the snow will come.
In my dreams, in my dreams, I could see
the snow on the trees.
And I could sit on the sleigh and ride.
So I can see the snow falling everywhere.
But I could hear the sleigh bells in the snow —
Snow, Snow and Snow.

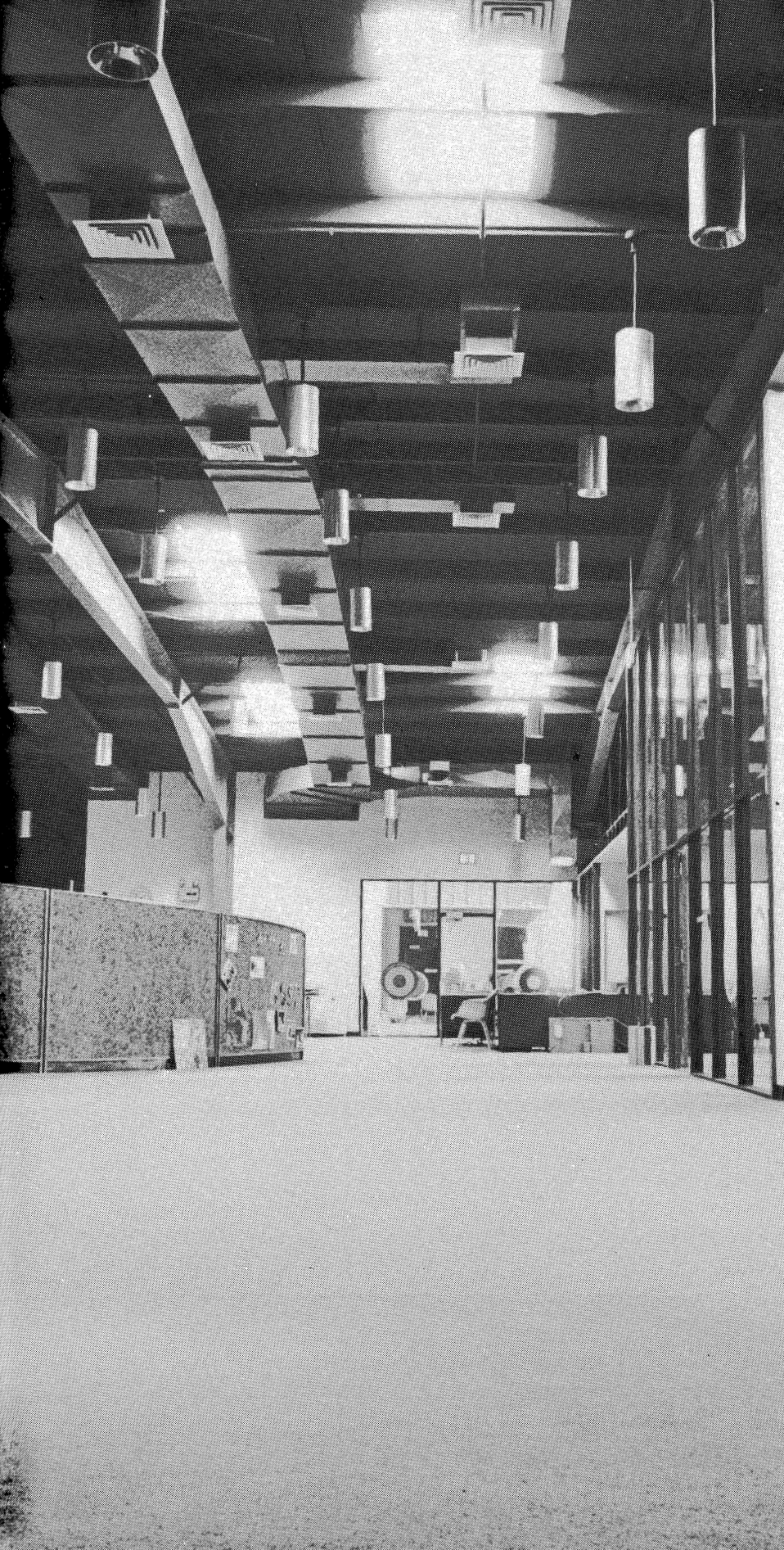


SPRING COMES

When the spring comes, it makes
me breathe fresh air that I enjoy.
I see the leaves of the trees are growing.
And the flowers are beautiful.
Spring comes everywhere.
But it starts to rain, when the wind
blows.
It is raining, again.
But it stops. It makes me feel gay.
And the rainbow starts to clear.
The sunshine is coming.
And I am on the meadow.
I look at the clouds.
I see the birds are gliding
around everywhere. They go.
And the spring comes back for the
next time — again.

by Mia Sackett





IMPRESSIONS OF AN OPEN SCHOOL

MSSD really lets us know people better, especially teachers and the "outside" world. MSSD gives me a better understanding of things and philosophies.

—Liz Katz

MSSD is a different school because of the open areas. It has free time.

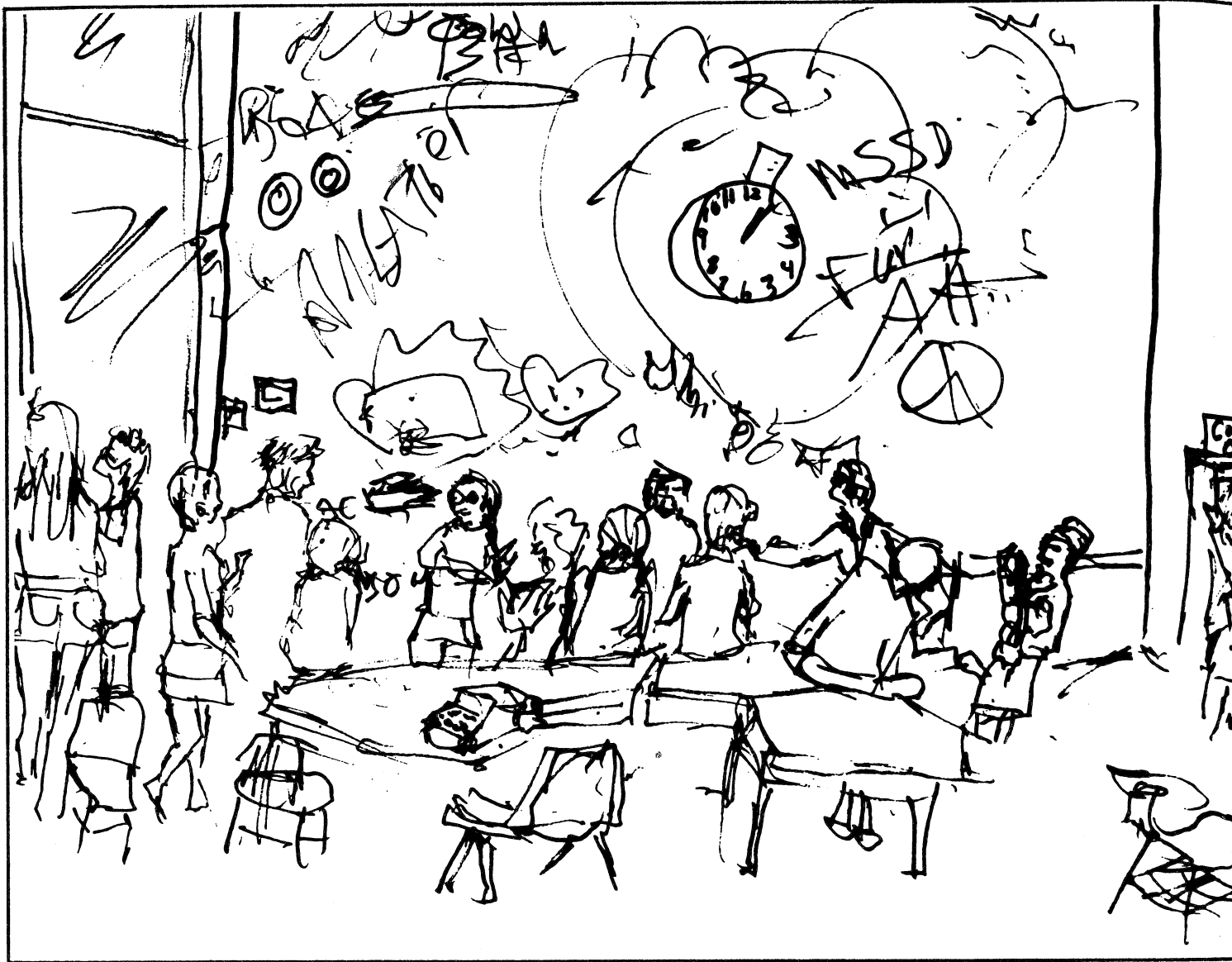
—Libby Goldstein

MSSD is different because it lets students pace their work. We have "modules" of twenty minutes each. We usually have two or more mods per course. The school itself doesn't look like a school, but like a building. Outside it is tan; inside it is colorful with bright, wide open spaces. No where in MSSD is off-limits to students. The main job of everyone at our school is communication. That makes MSSD special!

—Michele Schuster

MSSD is a freedom school!

—Bruce Shields



WALL

Mr. Cowden drew a big picture of a flower. Three or more students wrote on the wall. Then more and more students wrote on it. I think many students enjoy writing on a wall. They think it is fun. When we were finished, Mr. Cowden took a picture of the wall.

—Mike Sarracino

I think if there is something in your mind, and you want everybody to know what it is, then you can write it on the wall.

If visitors come and see the wall, they can tell that the school, students and teachers are more liberal than in big public schools.

You can see different personalities by what is written on the wall.

If someone writes something about you that may hurt your feelings or something, then I think it should be taken off the wall. Otherwise, you can write something back about that person!

—Joni Farris

If MSSD can have a Graffiti Wall, it will be a wonderful new experiment with walls. Our MSSD Wall won't hurt anybody. It won't lock anyone in or keep anyone out. It will be a way to keep all of us together. It will be a way to visit and communicate.

The English teachers have reported to Dr. Hicks that most of the students would like to experiment with a graffiti wall. We hope we can find the right kind of paint.

—An English teacher

THE



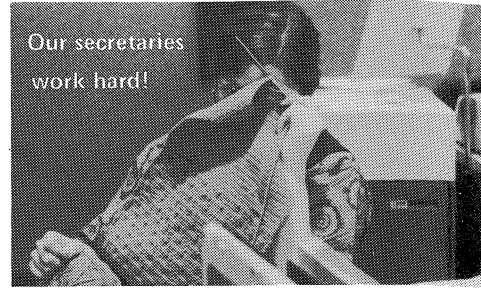


Who I Am,

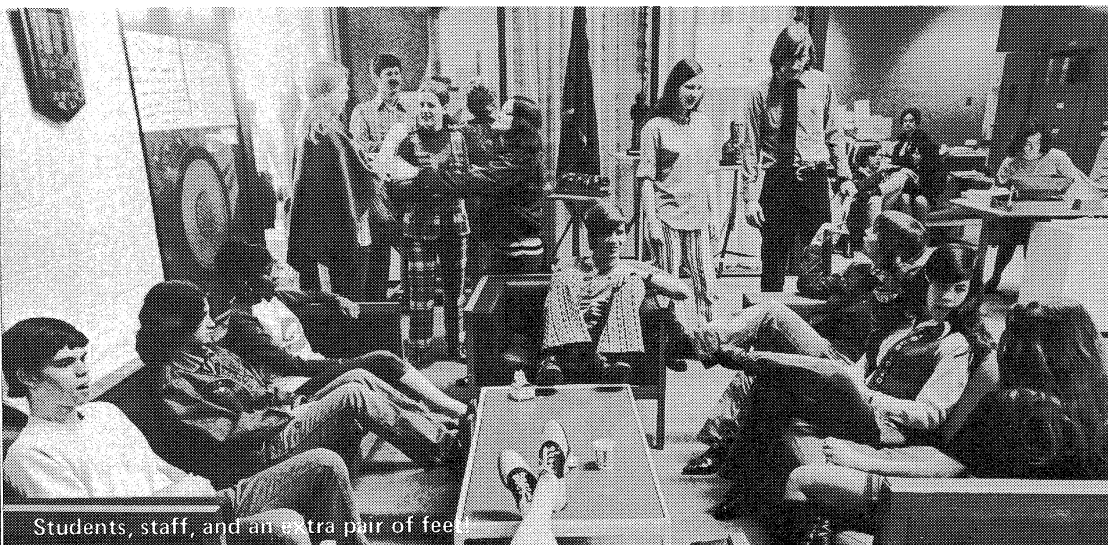
Linda Jackson finds the number 1 sign.



Our secretaries work hard!



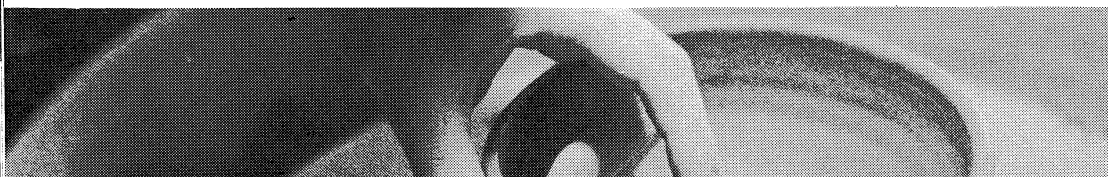
Researcher Dave Knight studies the length of his tongue.



Students, staff, and an extra pair of feet



Do these belong to you?



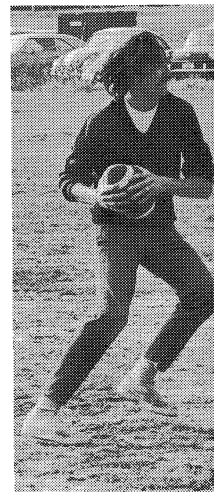
Wives of government officials learn about MSSD from Dr. Hicks.



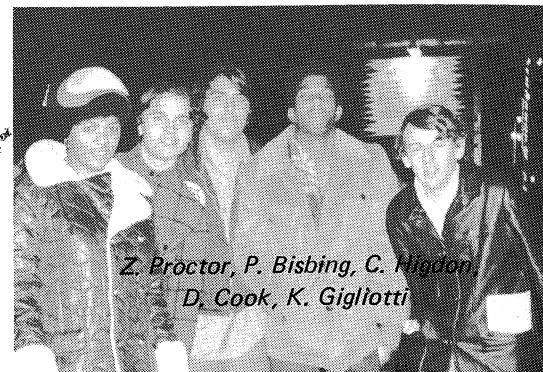
We can't lose!
Rory Pfister,
Jerry Owens



"I don't think I look that funny!"
John Cackler, Bill Fitzpatrick, Kris Gigliotti



What I Do



Z. Proctor, P. Bisbing, C. Higdon,
D. Cook, K. Gigliotti

FIRST FLAG FOR DEAF UNVEILED AT MSSD



Willis Mann of the NAD and Warren Coryell, former MSSD student and designer of the first flag for the deaf, present the flag to Dr. Doin Hicks, Director of MSSD, for safekeeping until it is accepted by deaf people as their official flag.

The next few pages will introduce you to the faces of MSSD. No one has been given special recognition since MSSD is a school that does not emphasize pupil-teacher distinctions.



Margie Guensch



Carol Beckman



Dave Holman



Diana Schriever



Terri McCall



Adelaide Lagnese



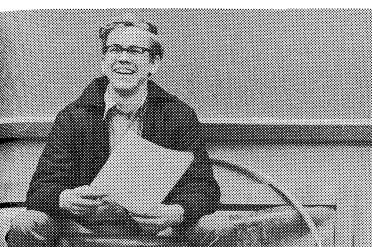
David Cook



Dr. Doin Hicks



Don Pettingill



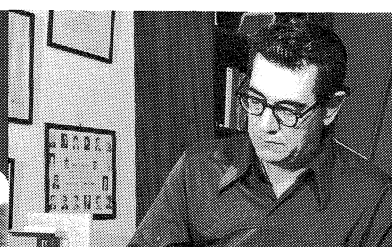
George Waldron



Paulette Watson



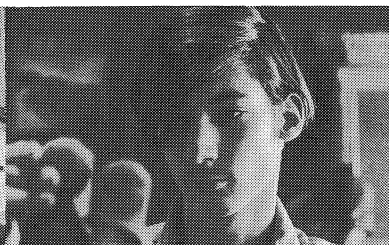
Shellie Moskowitz



Mervin Garretson



Ruby Johnson



Mike Sarracino



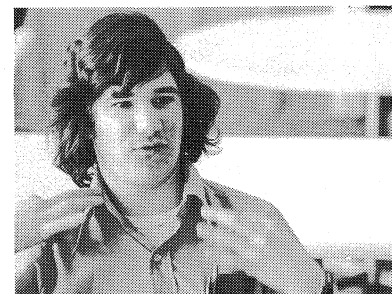
Barbara Riggs



Buddy Pitcher



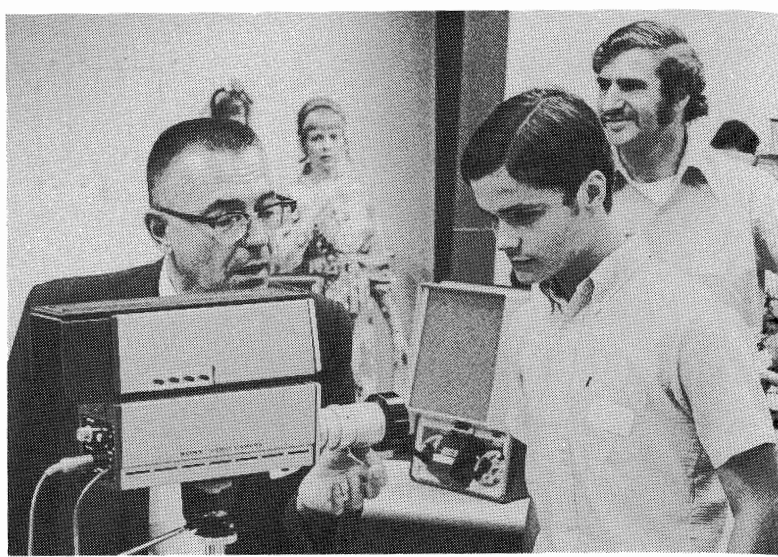
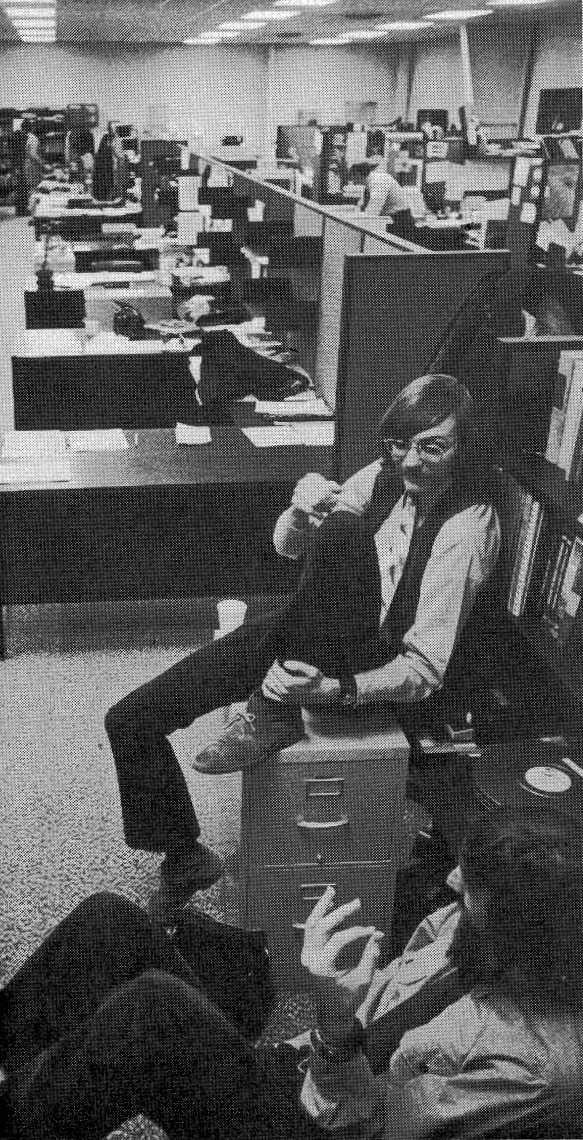
Chandler Cowden



Louis Lapidès



Betty Rosenbloom



"This part gives us a close-up picture of your shirt."
Ben Schowe, Paul Bisbing, Ed Leighton



"My desk is full. May I work in your file cabinet?"
Bob Loftus, Richard Lytle

Sharon Taylor and Joan Wehrli discuss a skit with Kathy Viola.

Robin Edwards

EACH
EXCITING
DAY
BEGINS
WITH A
RAP
SESSION

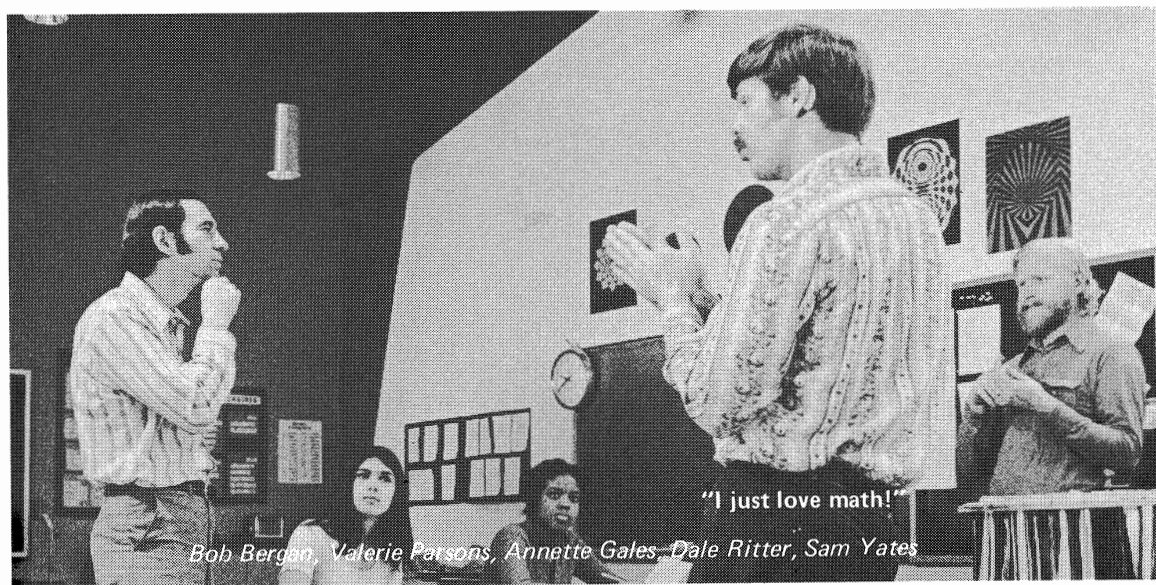




"Interpret, again??"
Dona Hoke



Bruce Shields



Bob Bergan, Valerie Parsons, Annette Gales, Dale Ritter, Sam Yates

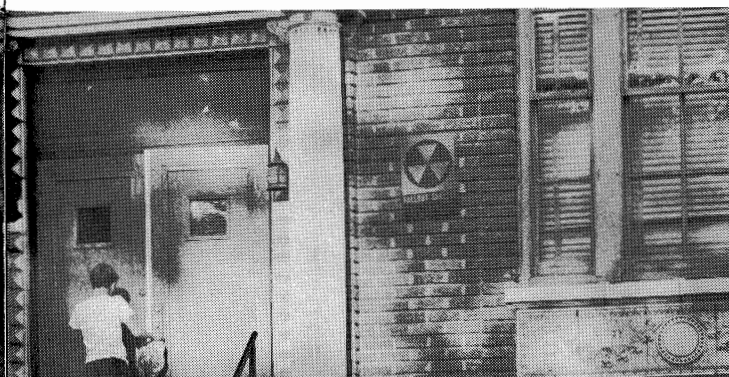


"Hmmm..."

"Last night..."



"It doesn't look funny to me!"
Kim Porter, Toby Silver, Liz Katz



LESSONS ARE IP'S, CLASSES ARE MODS

Classes are fun at MSSD. Students choose from a varied curriculum of ten subject areas. These include the usual major subjects such as language arts, science, math, and social studies. Other subjects are drama, art, business education, driver's education, off- and on- campus study programs, home economics, communications, computers, drugs, library, physical education, Spanish, and cued speech.

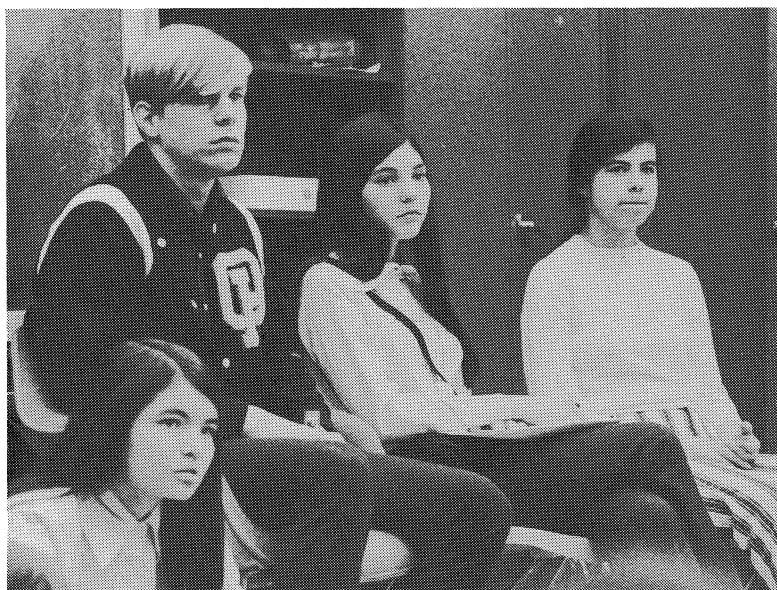
Each day is different with students' schedules having varying amounts of subject time and free time. Learning is challenging and exciting at MSSD.



Rochelle Fields

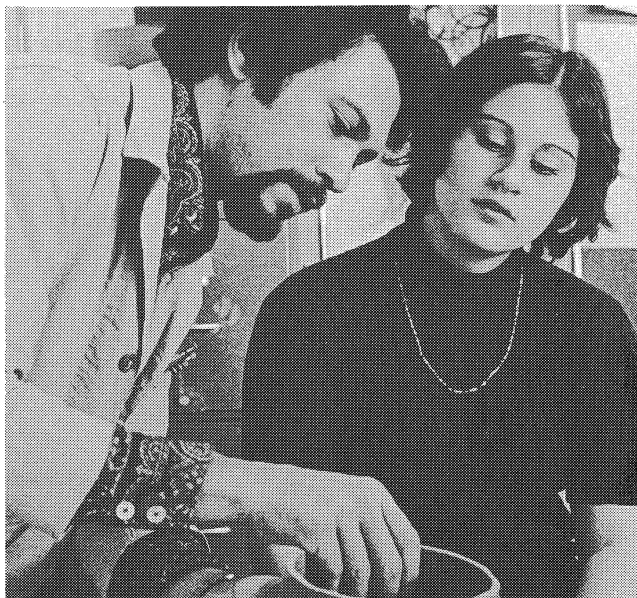


Teaching Spanish through cued speech.
Brenda Graves, Jay Diamant



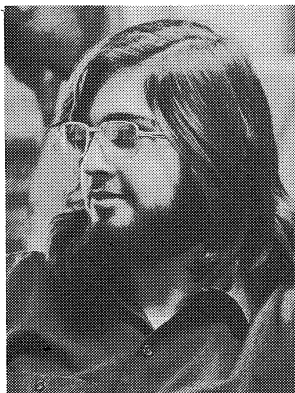
"Do you think he'll ever stop talking??"

Meriam Schroeder, Kip Nichols, Linda Harris, Mia Sackett



"NOW, I see."

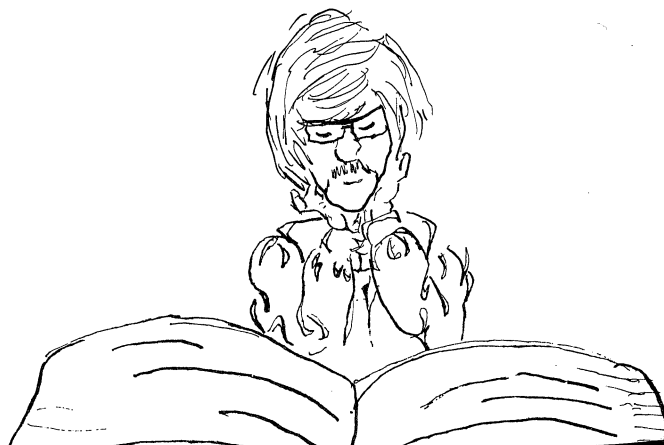
Jay Tucker, Joene Farris

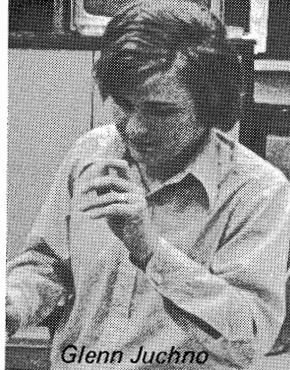
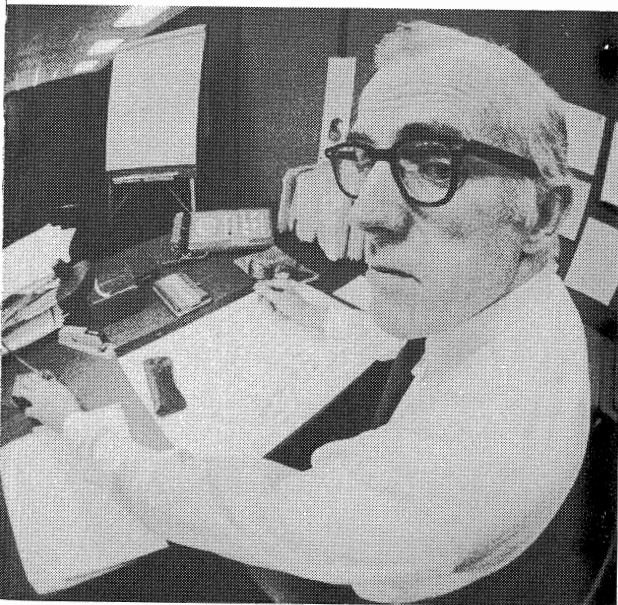
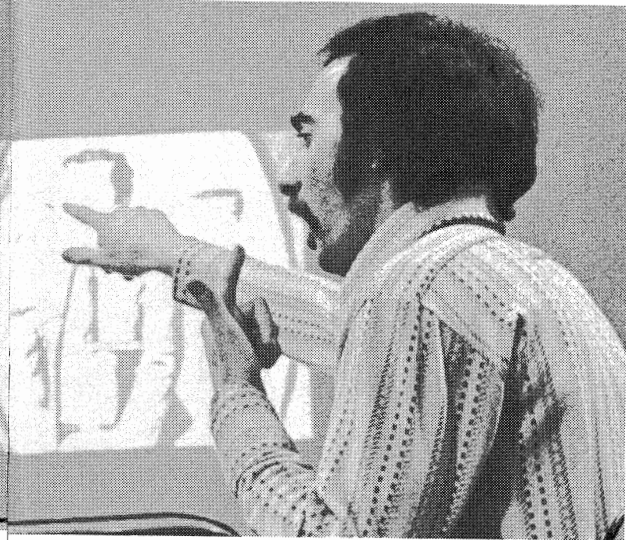


Brad Griffith



Rene Kieliger

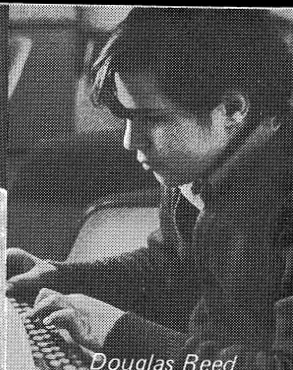




Glenn Juchno



Grace Schienda



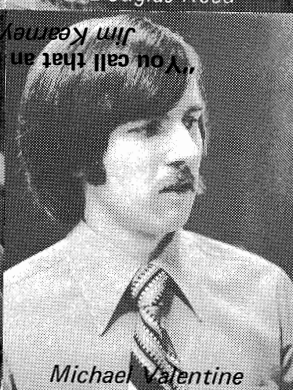
Douglas Reed



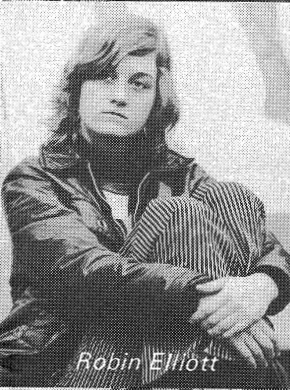
Christine Wehrli



Barbara Odle



Michael Valentine



Robin Elliott



Margaret Ewing



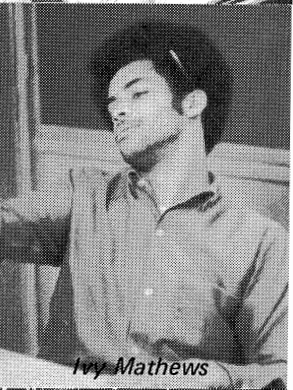
Diane Plassey



Theresa Strong



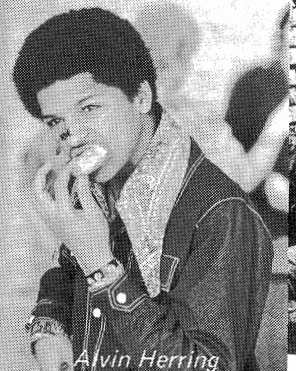
Rex Connor



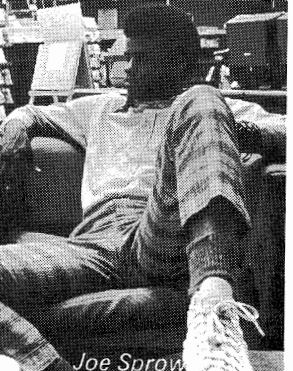
Ivy Mathews



Steve Gasco



Alvin Herring



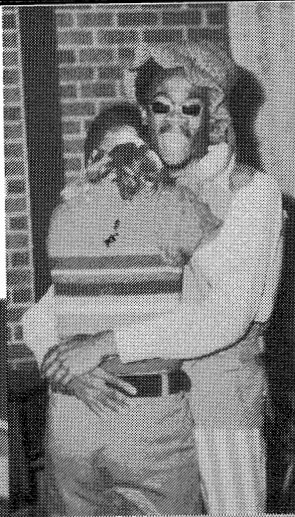
Joe Sprow



DEAF PRIDE

School opens in September. Josephine Diagonale, English Instructor, introduces Dan Piccerillo and his mother to the funny side of MSSD.

Percy Bundy
Charmaine Jusevich
Eugene Eabon



Marita Danek
Mona Gold



Jim Wilbanks
Patricia Robertson



Say CHEESE!
Reggie Boyd, Cheryl Young, Shira Reiter



MSSD Student Store Committee:

Toby Silver, Theresa Strong, Linda Jackson, Joseph Rosenstein, Barbara Odle,
Jean Teuteberg, Galen Adams, Glenn Juchno, Bill Barber

ALIVE AT MSSD

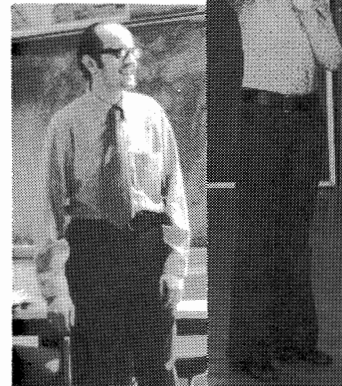
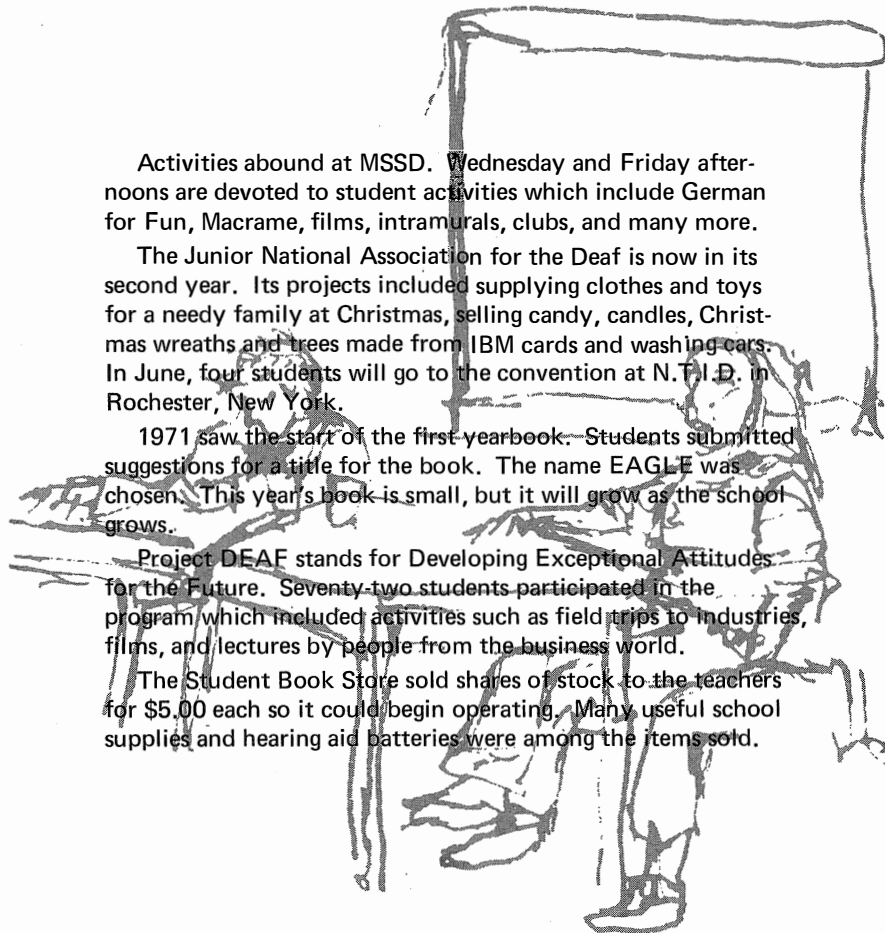
Activities abound at MSSD. Wednesday and Friday afternoons are devoted to student activities which include German for Fun, Macrame, films, intramurals, clubs, and many more.

The Junior National Association for the Deaf is now in its second year. Its projects included supplying clothes and toys for a needy family at Christmas, selling candy, candles, Christmas wreaths and trees made from IBM cards and washing cars. In June, four students will go to the convention at N.T.I.D. in Rochester, New York.

1971 saw the start of the first yearbook. Students submitted suggestions for a title for the book. The name EAGLE was chosen. This year's book is small, but it will grow as the school grows.

Project DEAF stands for Developing Exceptional Attitudes for the Future. Seventy-two students participated in the program which included activities such as field trips to industries, films, and lectures by people from the business world.

The Student Book Store sold shares of stock to the teachers for \$5.00 each so it could begin operating. Many useful school supplies and hearing aid batteries were among the items sold.



*Richard Steffan
Mary Yeh*



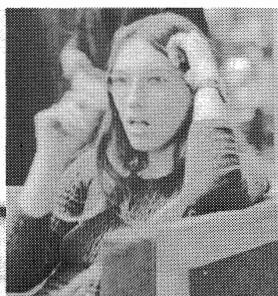
*Val Parsons
Mike Weinstock*



Ellen Kidder



Bill Barber



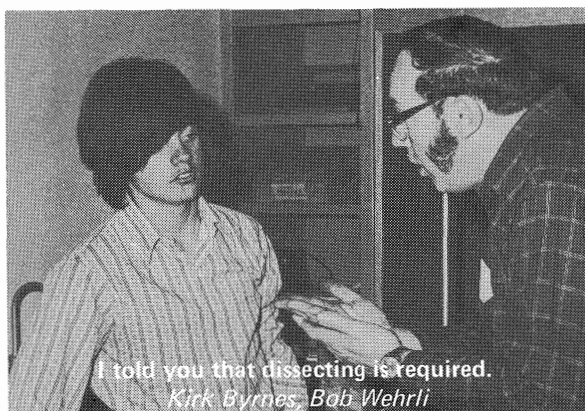
*Sandy Graham
Delma Beverly*



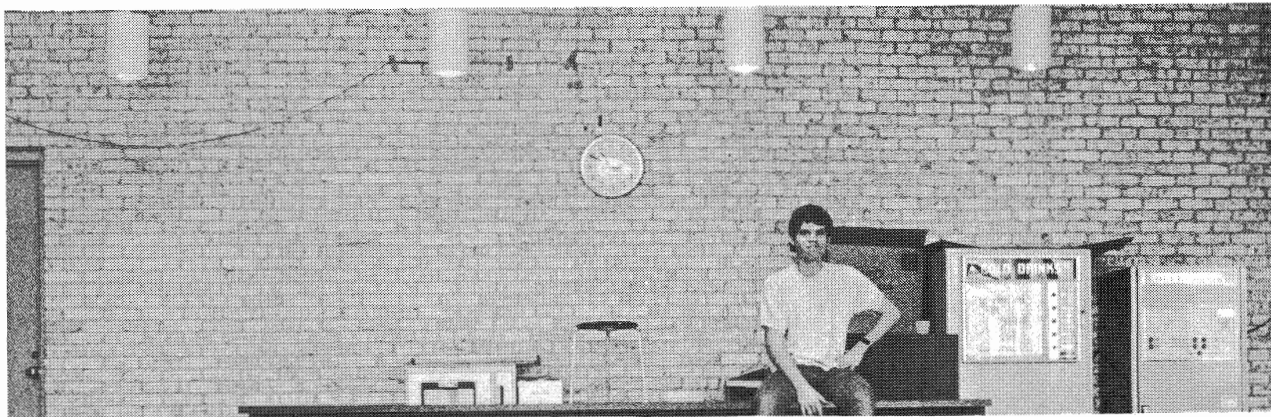
Lily Corbett

*Cheerleaders: V. Parsons, J. Farris, C. Young, W. Carroll,
R. Elliott, A. Gales, D. Ware, J. Hudgins*





Edgar Boling



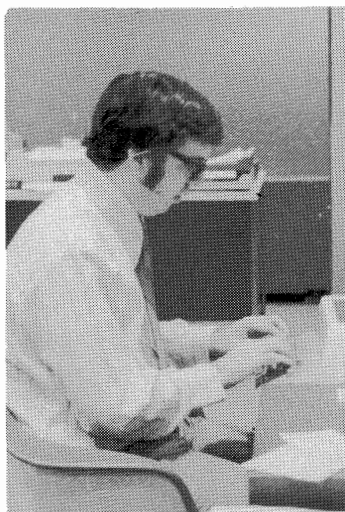
Pat Chrzanowski
Mary Darnell
Guy Watson



"Isn't school fun?"
Mary Baker



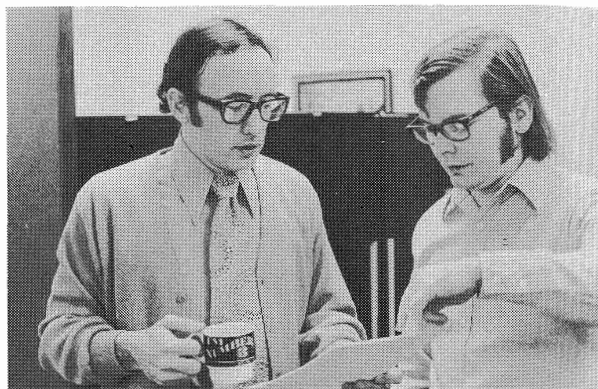
MSSD IS FUN, SCHOOL



Bob Fisher



"Then, we lost the game by 100 points."
Shelly Scott, Randy Kibler



"I think I'm ready to take the post-test."
Dr. Gene Thomure, Bill Grant



Leo Club: (Row 1) *D. Ritter, L. Katz, M. Schuster, T. Silver, J. Hudgins, M. Schuster*; (Row 2) *D. Pyles, R. Boyd, S. Gasco, B. Barber*; (Standing) *C. Green, K. Gigliotti, D. Piccerillo, E. Bergstresser, T. Strong, B. Pitcher, I. Mathews, M. Sarracino, J. Wehrli, D. Cannon, M. Ewing, T. Harper.*



The loser has to clean the lunchroom!
Richard Sealock, George Waldron, Caryl Purdue



Galen Adams



Ellen Erikson



Jim Bowers



Jeannette Hudgins



Ed Bergstresser



Elizabeth Scott emphasizes a fact about World War II to Bob Shanahan.

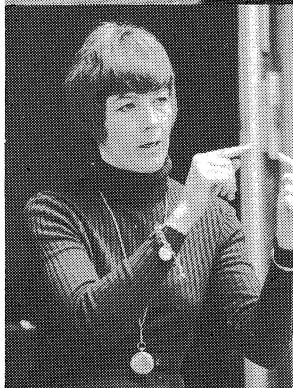


Debbie Ware



Smile!

Monica Schuster, Michele Schuster, Darlene Pyles

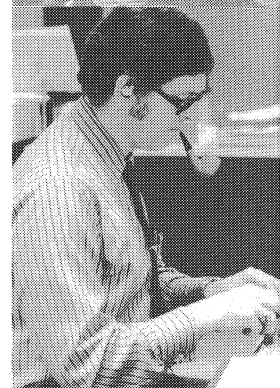


*Pam Childs
Mary Hockersmith*

*Paul Cunningham
Laurie Kelley*



Lydia Bourne



*Nancy Strizver
Vic Galloway
George McClendon
Audrey Welch*



LEARNING IS STUDENT-CENTERED

Gordon Roehrick

Sarah Val

Genny Richards

Willie Carroll



Denise Sullivan

Jeri Monahan

Beverly Chewning

Jean Fulton



Jr. NADers: A. Gales, R. Boyd, M. Schuster, L. Katz, D. Sawhill, T. Silver, M. Schuster, G. Rivas, G. Adams, G. Juchno, T. Wehrli, M. Schroeder, B. Griffith, B. Schowe, B. Bergan, B. Clinard, L. Jackson, J. Wehrli, G. Roehrick, J. Sprowl, S. Val, M. Yeh.

TEACHERS ARE PEOPLE, TOO!



Terry Baird



Rosie Freeman



Stella Koch



Ken Carlton



Daniel Lewis

Elizabeth Baird



Margaret Olson



Beverly Walton



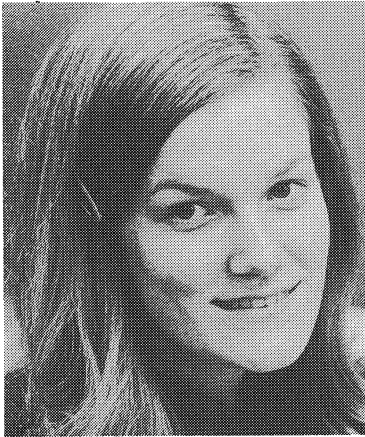
Vince Palacino



Day is done and it has just snowed. What a feeling!

D. Cook, S. Reiter, S. Taylor, R. Kibler

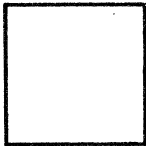
Gail Rivas



Emily Matson



Kathy Gunshore



Vivian Rice



Roz Rosen



Margaret Withrow



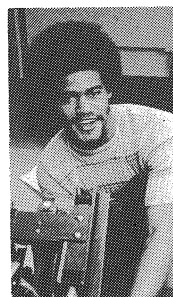
Joel Ritter



Mark Surette



Marjorie Law



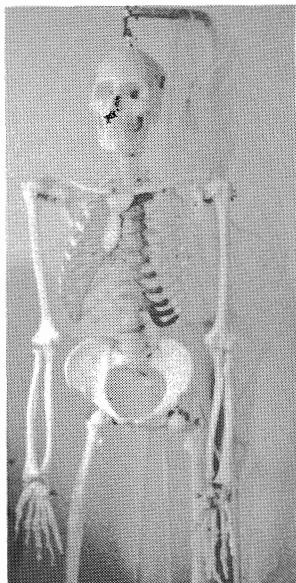
Reggie King





Weida Walker

Someone forgot to unlock the science lab.



Fred Bone

Evelyn Wolstein



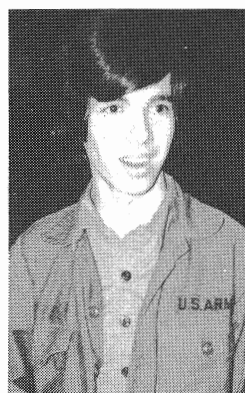
Jim Copeland, Leo Club District Representative, presents Vice-President Meriam Schroeder the banner of the newly chartered MSSD Leo Club.



Betty Clinard



Megan Tyndall



Bill Blanchard



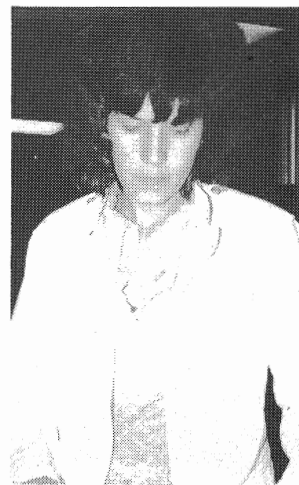
Linda D'Antoni



Glenda Ennis



Bea Chatman



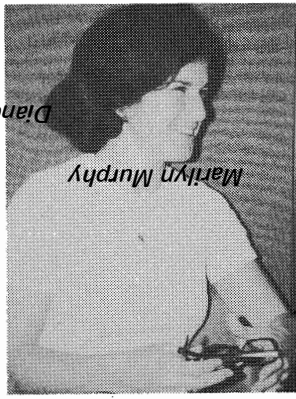
Barbara Burkett

Betty Peacock



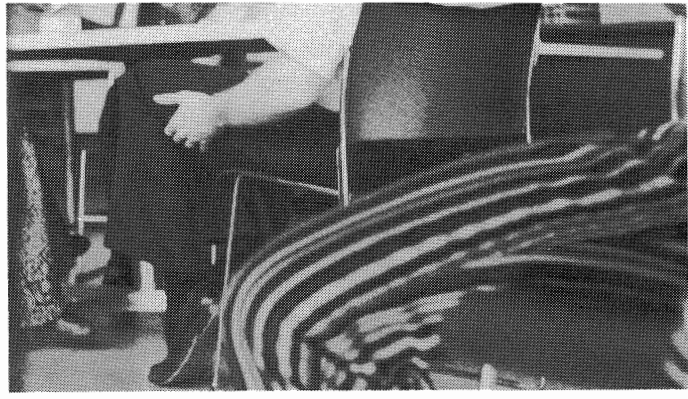


Diane Kelpinski

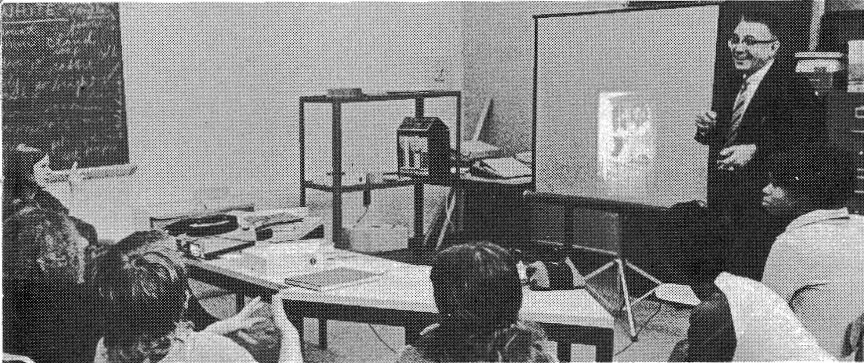


Marilyn Murphy

Janie Hayes



Who's got an itch?

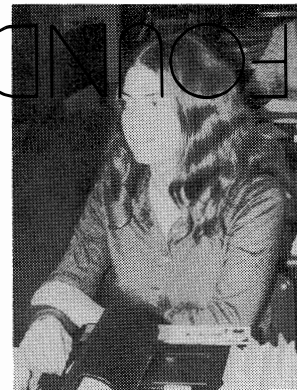


Learning is success in understanding.



Jan Wetterer

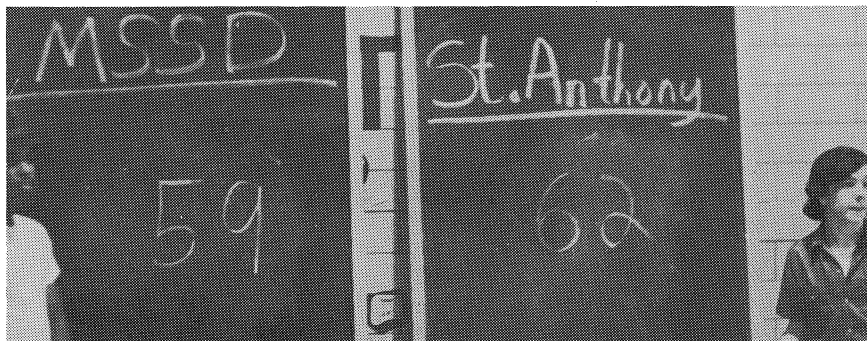
SOLID FOUNDATIONS BUILT



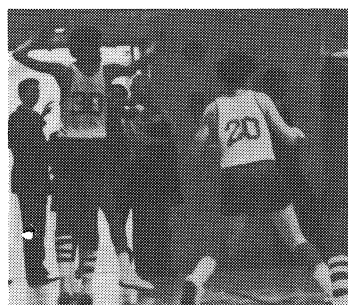
Libby Goldstein



Pull up your socks.



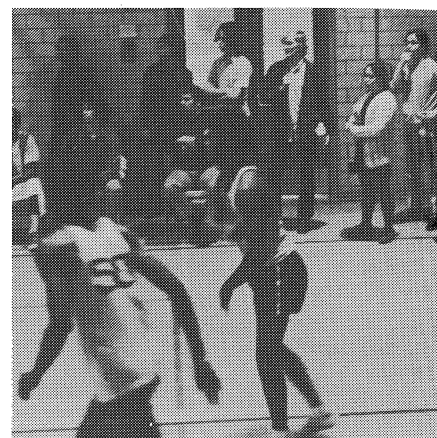
Oops!



A new dance?



I'm taller!



Here goes an extra point.

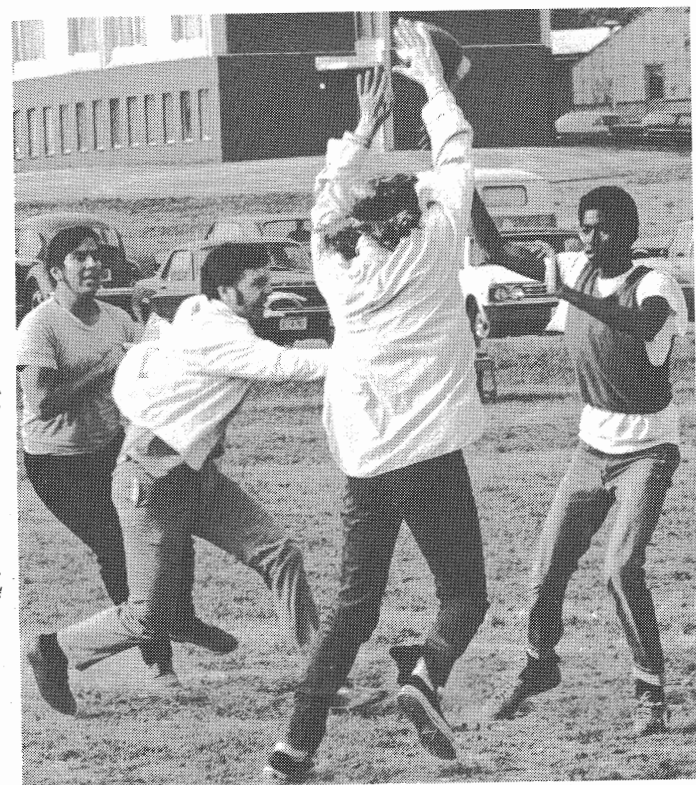
Sports are an important part of MSSD life. From September to June, everyone can participate in a number of organized or intramural sports such as football, softball, volleyball, tennis, bowling, basketball and track.

Under the direction of Terry Baird, a cheerleading squad was organized this year. Eight girls were selected to cheer the basketball team on to victory. They appeared in uniforms which they themselves had designed and sewn.

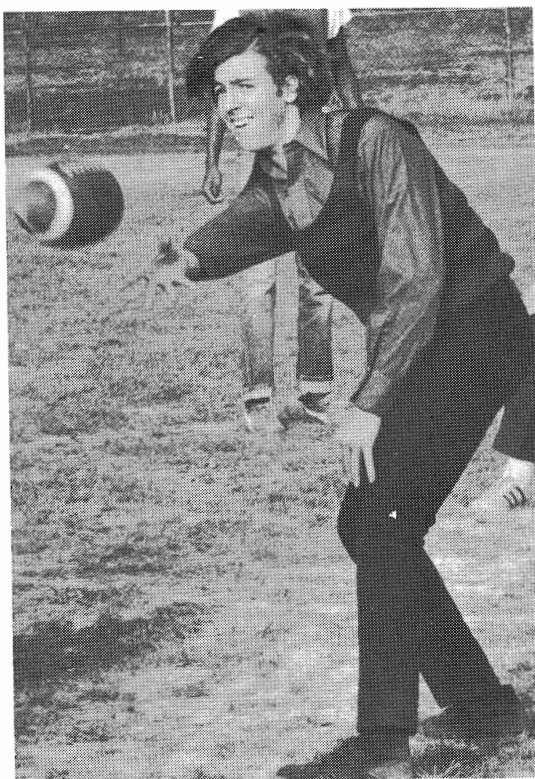
This year's basketball team was much better than last year's. The varsity squad was coached by Bob Bergan while the J.V. squad was coached by Ed Leighton.

Although the basketball team sported a 9-4 win record early in the season, a series of losses caused the team to end with a 9-11 record. Team stars, Jerry Owens with 19 ppg and Joe Sprowl with 17ppg, were ably aided by the other team members.

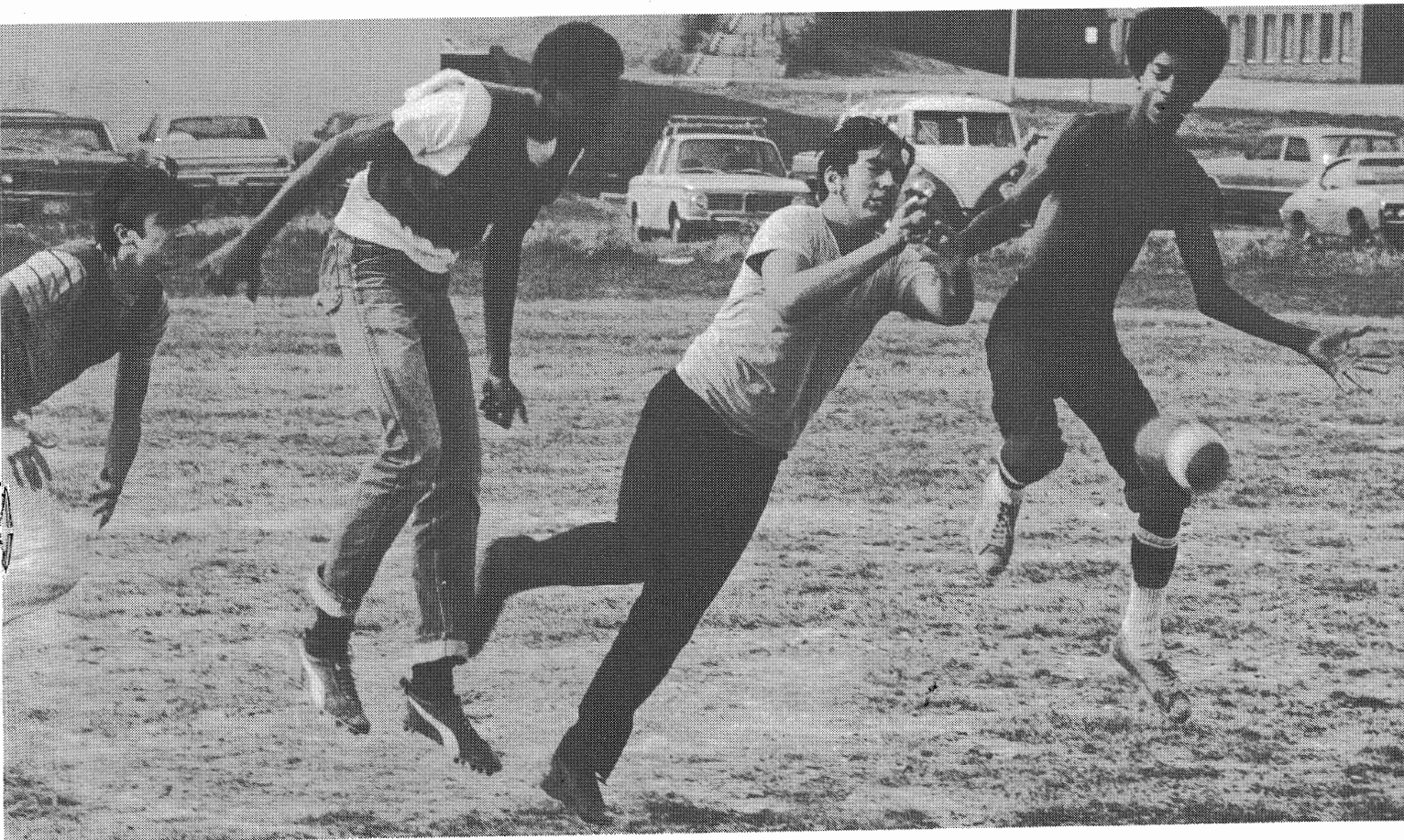
As MSSD grows, so, too, will its sports scene.



Push the ball, don't throw it. *C. Higdon, B. Fisher, J. Owens.*



Catch! *S. Scott*



Lost in flight. *M. Surette, J. Owens, C. Higdon, K. Porter*

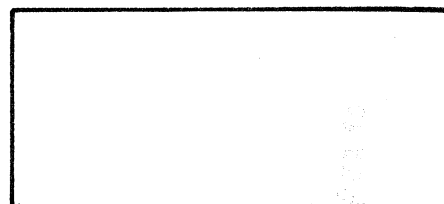


J.V. Team: *L. Lapidès, M. Surette, D. Cook, P. Bundy, S. Gasco, R. Boyd, E. Leighton, M. Weinstock, M. Sarracino, A. Gray, K. Gigliotti, B. Shields.*

BASKETBALL SCORES HIGH



Hurry up. They're starting the game.

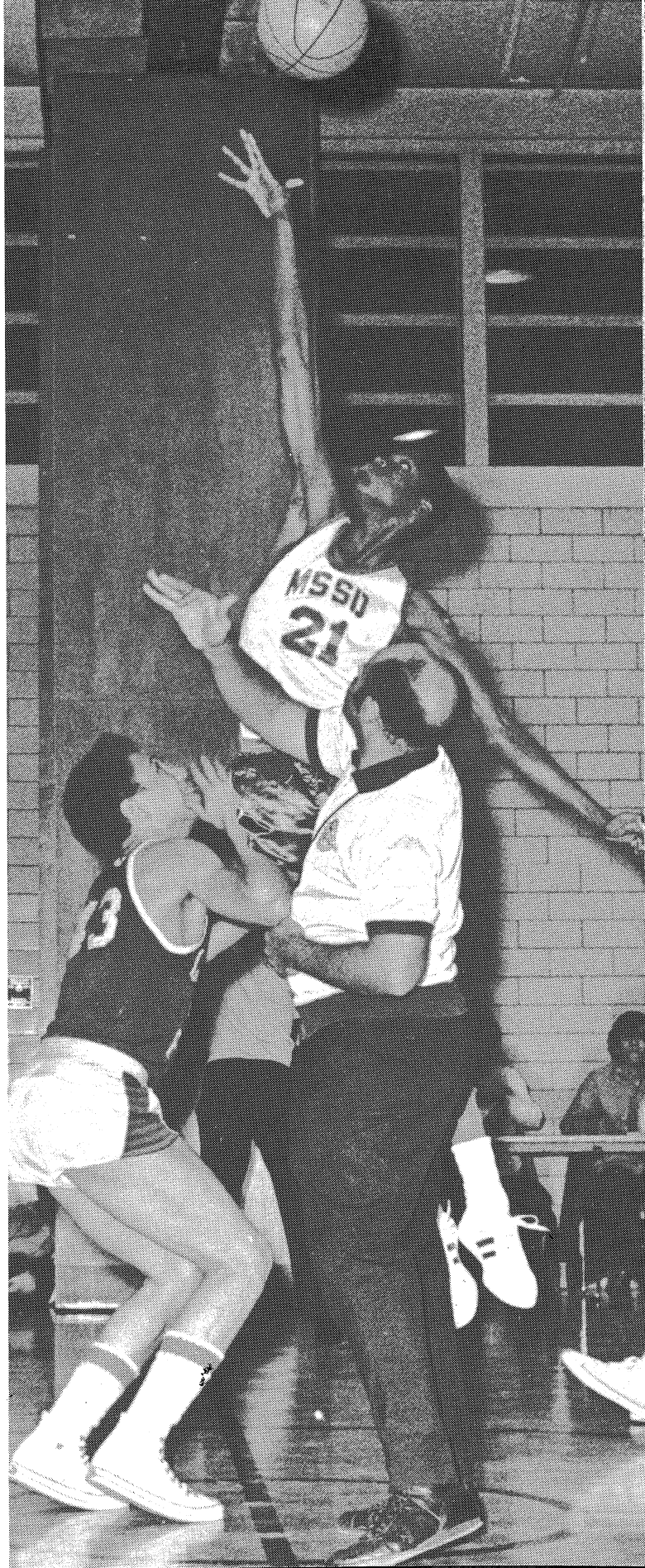
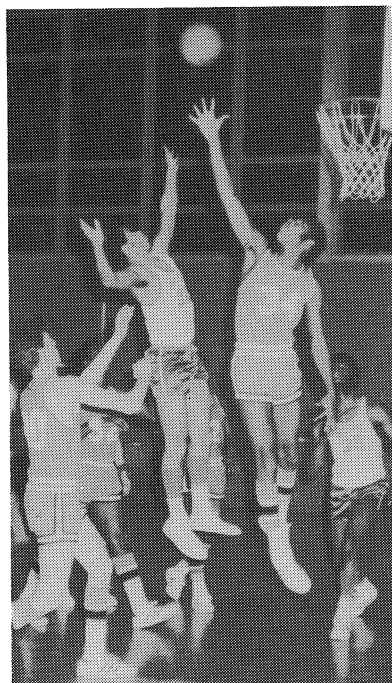
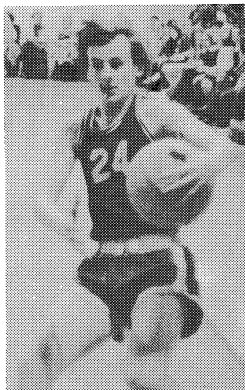
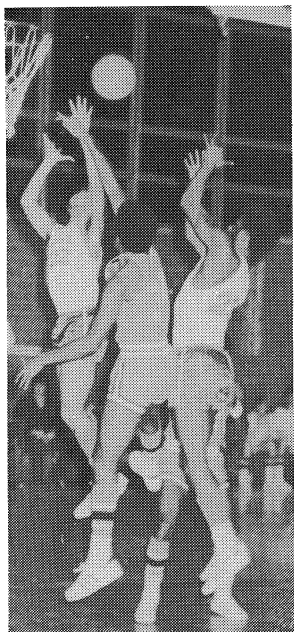


Varsity Team: *H. Goodson, I. Mathews, J. Owens, J. Sprowl, R. Pfister, K. Porter, B. Bergan, A. Herring, K. Nichols, D. Piccerillo, G. Proctor, G. Roehrick.*



How many of you take math?

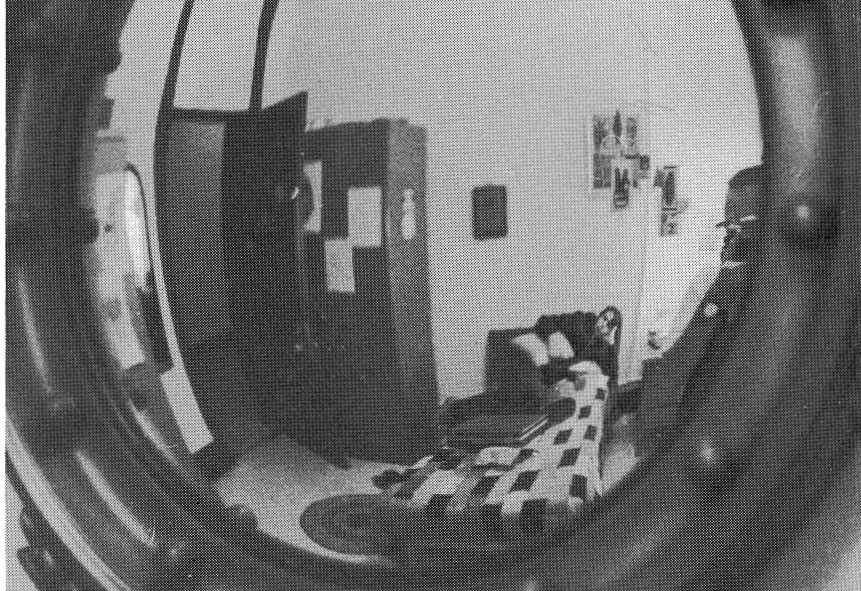
*B. Bergan, D. Piccerillo, I. Mathews, K. Nichols, G. Roehrick,
K. Porter, R. Pfister.*



DORM LIFE



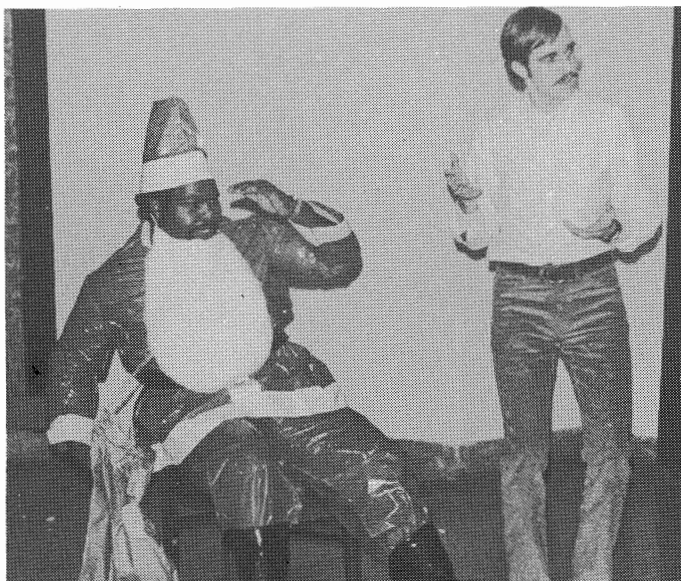
"Take me to the dorm, Casey."



"Yes, my wall is a little different."



Christmas fun.



"Honest, kids. He's really Santa!"
Bill Saunders, Mike Deninger



"Pool has an 8 ball, doesn't it?"
S. Gasco



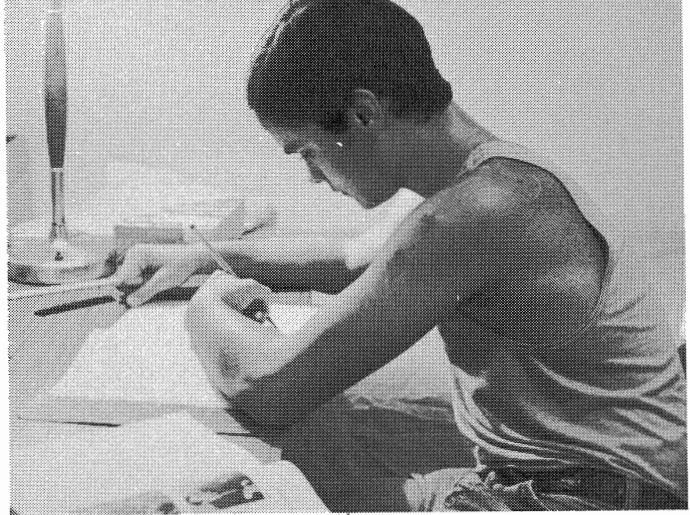
"And if she doesn't leave him alone . . . Pow!"



Cheryl Davenport



"I don't know who he is. He followed me home!"
Carol Hamlin, Chuck Daube, Barbara Wicks



"I haven't moved in two days!"
Paul Bisbing



It's a beautiful day
 It's a beautiful day
 I would rather go out to stay.
 I see the people who walk with
 hand-in-hand are playing around.
 And the children are holding the
 kite gliding.
 It's a beautiful day
 As the sun is shining onto
 the flowers brightly
 As the waters are shimmering.
 It's a beautiful day
 And the night will never come.
 It's a beautiful day.

—Mia Sackett
 —Theresa Strong





**Where
I Will
Go,**

**What
I Will
Do**



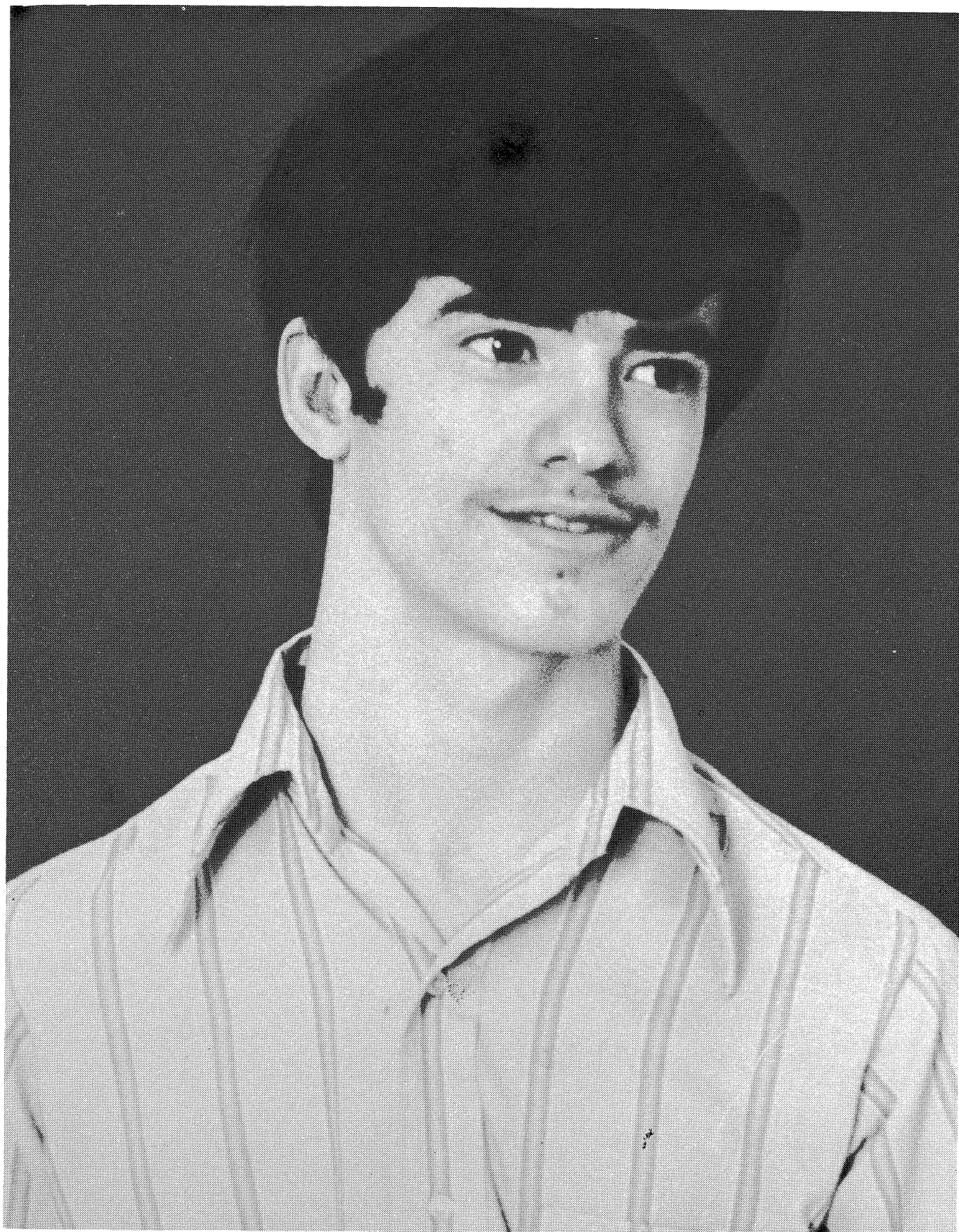




William Josiah Ayers

Bill comes from New Castle, Pennsylvania. He will apply for college in the fall. He may pursue a career in computers.

Pet Peeve . . . fights
Weakness . . . Italian food
Favorite Subject . . . math
Favorite Saying . . . What?
Favorite Sport . . . soccer
Favorite Pastime . . . watching t.v.
Ambition . . . undecided





Douglas Cornelius Cannon IV

Doug is a camera buff who comes from Upper Marlboro in Prince George's County, Maryland. A career in electronic engineering is his goal after graduation from NTID.

Pet Peeve . . . math
Weakness . . . music
Favorite Subject . . . science
Favorite Saying . . . To be or not to be.
Favorite Sport . . . go-karting
Favorite Pastime . . . driving
Ambition . . . NTID



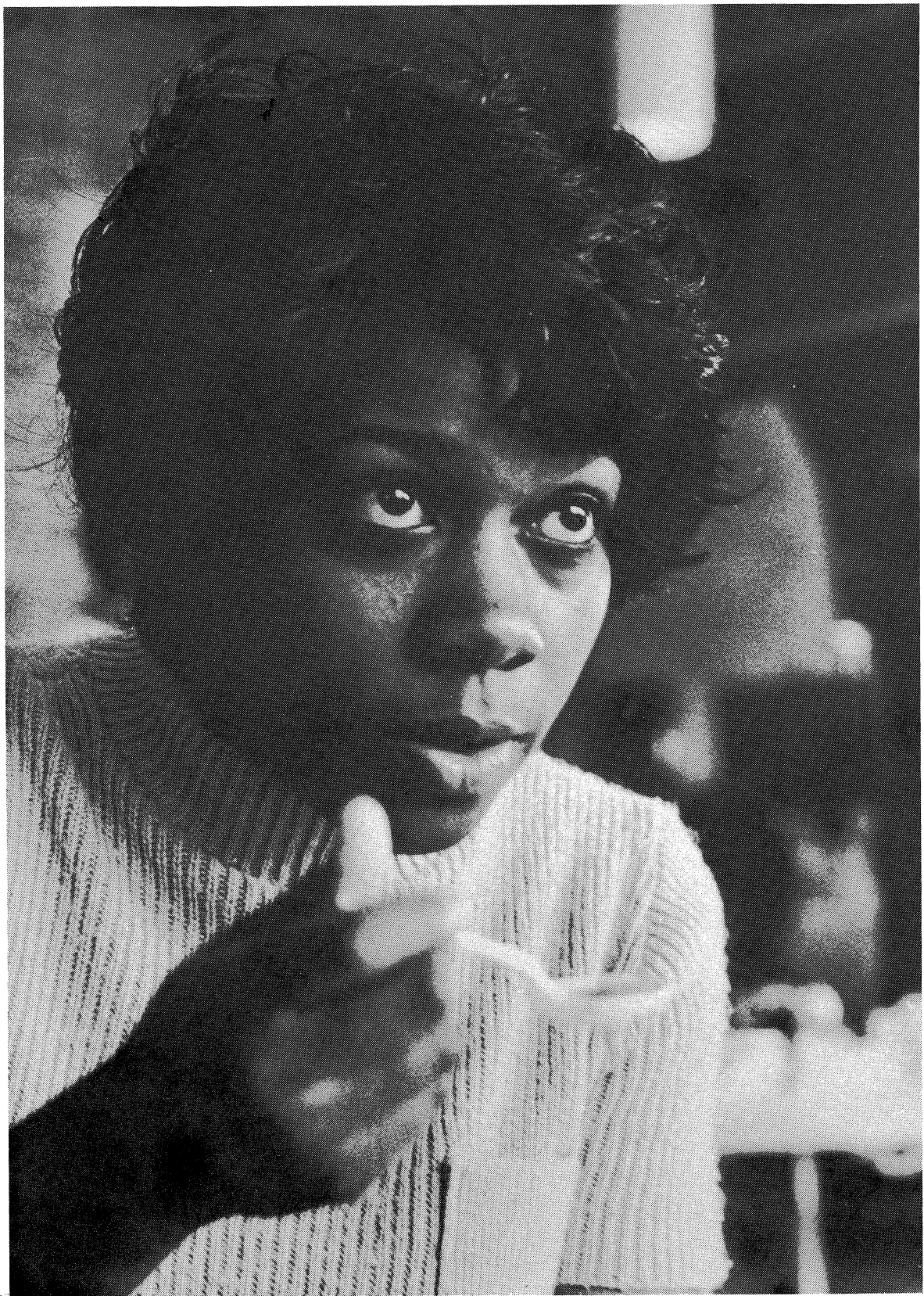


Athena Tina Dardamanis

Tina came to MSSD from Garrison Junior High School in Baltimore. Her future plans are undecided.

Pet Peeve . . . trouble
Weakness . . . Italian food
Favorite Subject . . . typing
Favorite Saying . . . So What!
Favorite Sport . . . baseball
Favorite Pastime . . . cooking
Ambition . . . undecided







Mary Jean Gilchrist

Mary is a resident of Washington, D.C. She attended Kendall School before coming to MSSD. Her future plans center on her forthcoming marriage.

Pet Peeve . . . rumors
Weakness . . . Chinese food
Favorite Subject . . . English
Favorite Sport . . . softball
Favorite Pastime . . . cleaning up
Ambition . . . marriage



James Robertson Grandin, Jr.

Jim comes from Sumner, Maryland. He is a former student of the Kendall School. His hopes are for a college education at Gallaudet or at NTID.

Pet Peeve . . . heavy traffic
Weakness . . . Linda
Favorite Subject . . . science
Favorite Saying . . . Cool it!
Favorite Sport . . . golf
Favorite Pastime . . . playing records
Ambition . . . NTID



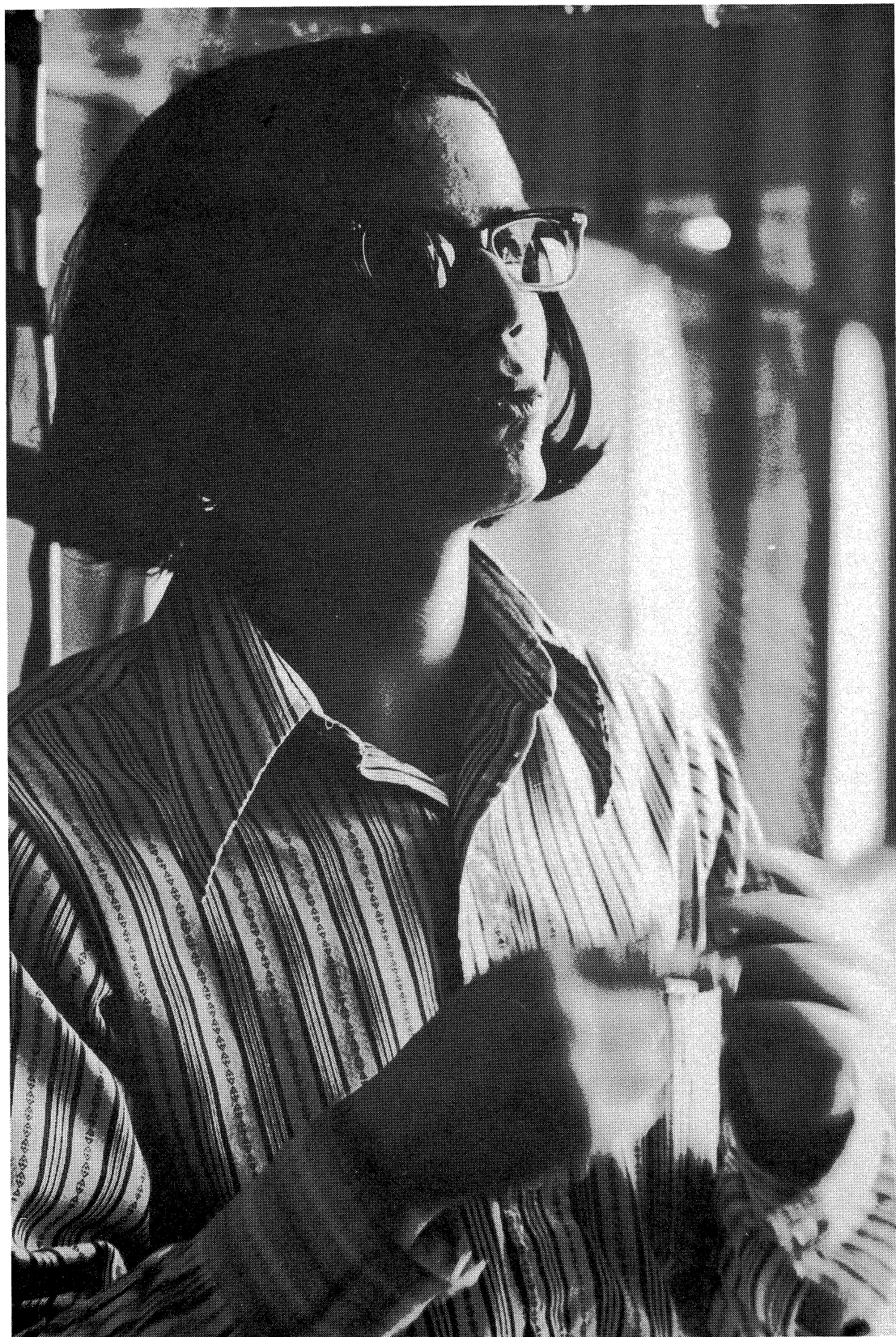


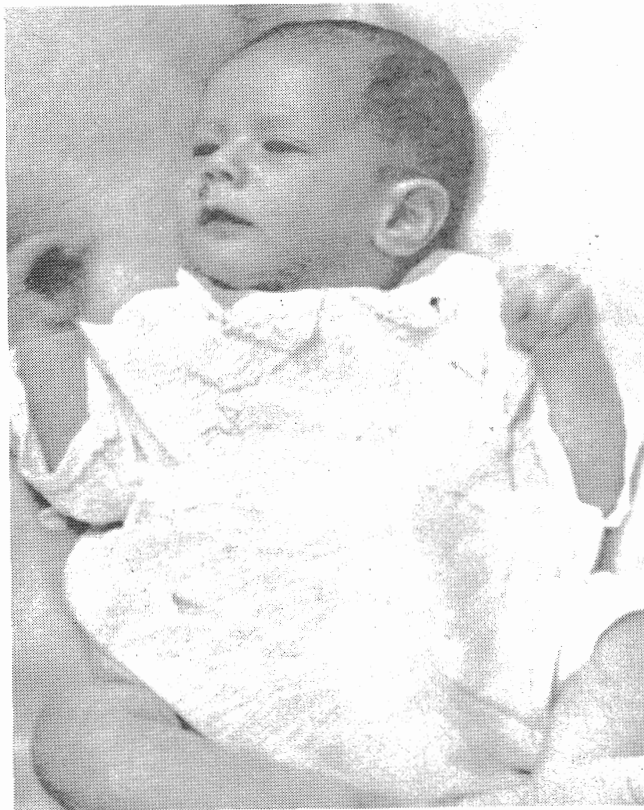
Brenda Joyce Graves

Brenda, now a resident of Washington, D.C., is from High Point, North Carolina. She attended the North Carolina School for the Deaf before coming to MSSD. After graduation, she will pursue a career in culinary arts.

Pet Peeve . . . trouble
Weakness . . . pizza
Favorite Subject . . . Spanish
Favorite Saying . . . Sure!
Favorite Sport . . . baseball
Favorite Pastime . . . cleaning up
Ambition . . . marriage







Corey Bruce Green

Corey is from Adelphi in Prince George's County, Maryland.
He will attend the Denver Community College after graduation.

Pet Peeve . . . fights

Weakness . . . kinds of potatoes

Favorite Subject . . . typing

Favorite Sport . . . bowling

Favorite Pastime . . . reading the newspaper

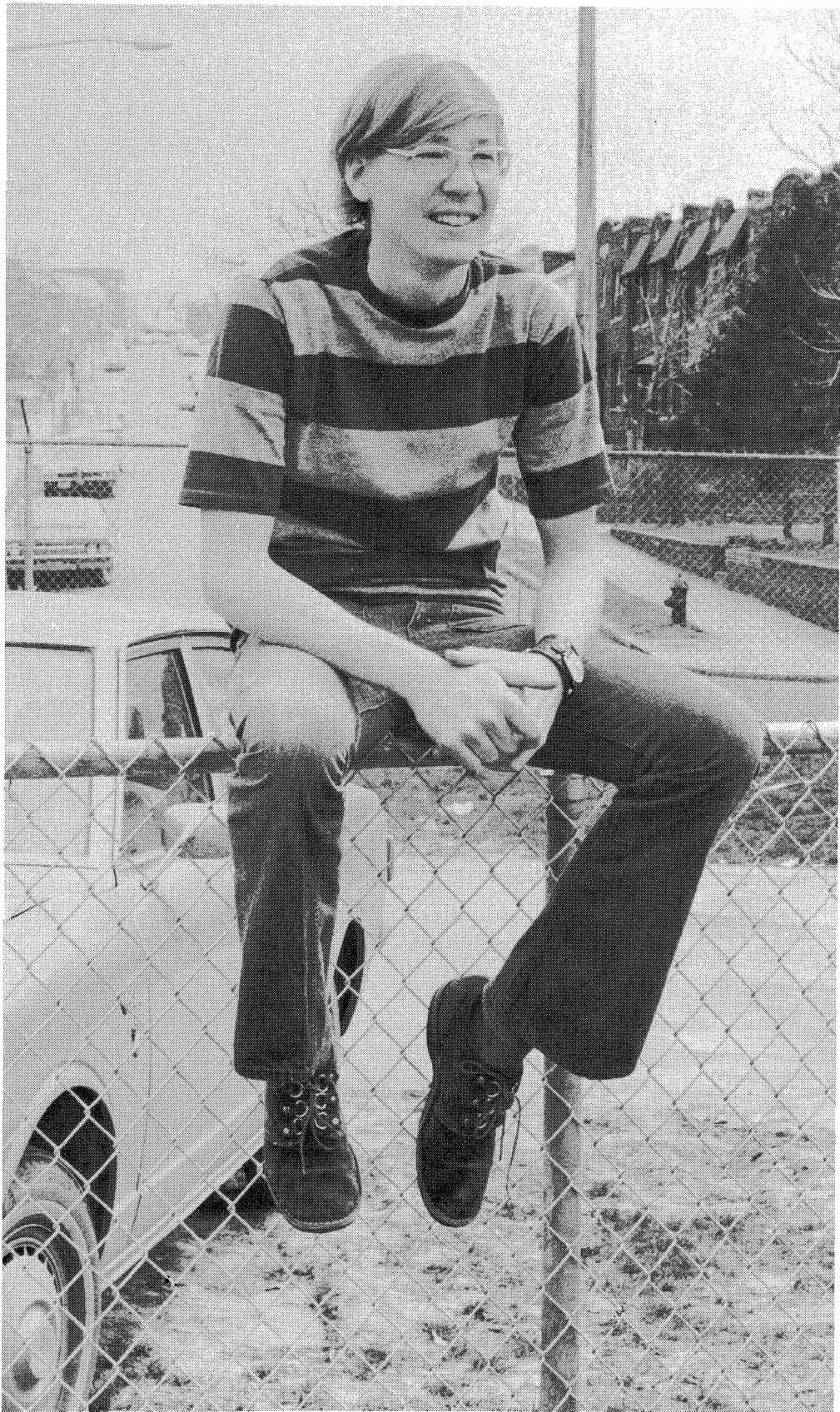
Ambition . . . TVI



William Vance Greenwood

Bill, a resident of Camp Springs, Maryland, is a former student of the Trenton School for the Deaf in New Jersey. He hopes to attend St. Petersburg Junior College in Florida.

Pet Peeve . . . driving
Weakness . . . cars
Favorite Subject . . . algebra
Favorite Saying . . . What happened?
Favorite Sport . . . golf
Favorite Pastime . . . practicing golf
Ambition . . . TVI

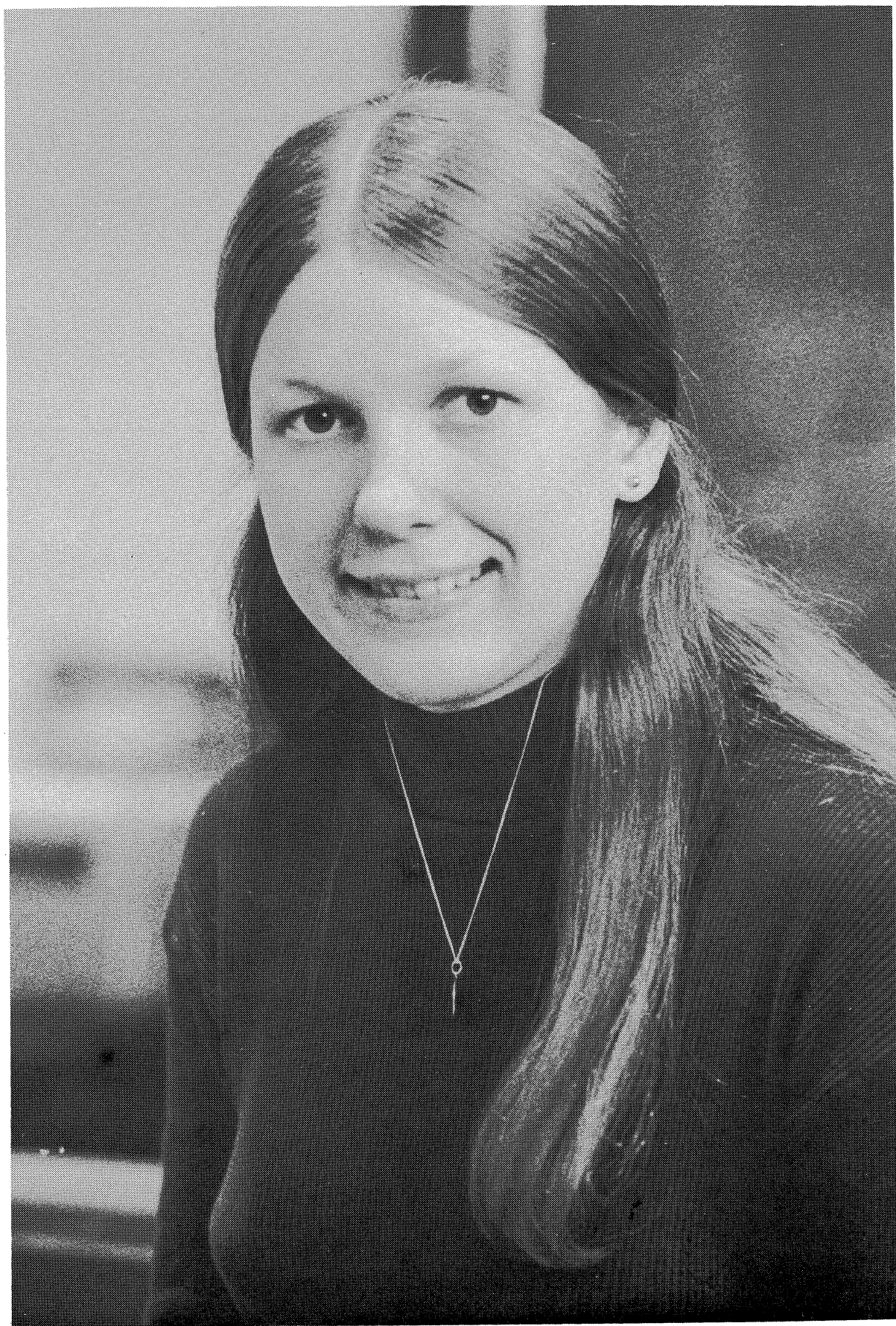


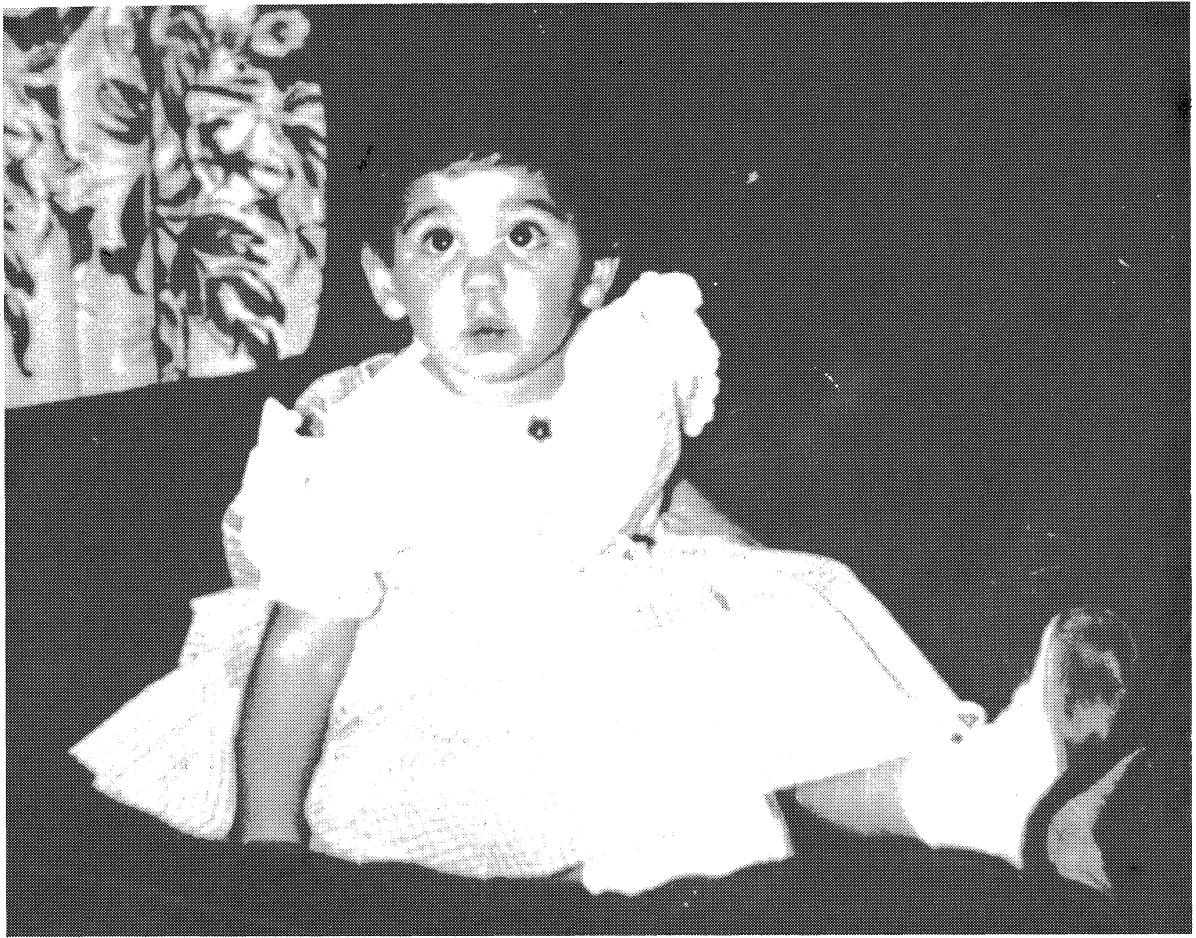


Tamara Lee Czado Harper

Tammy attended school in Montgomery County, Maryland before coming to MSSD. She lives in Takoma Park, Maryland. A very special event occurred last December 18th when she became Mrs. Gerald Harper. She will apply for a job with the government in June.

Pet Peeve . . . getting up early
Weakness . . . husband
Favorite Subject . . . typing
Favorite Saying . . . Why?
Favorite Sport . . . horseback riding
Favorite Pastime . . . sewing
Ambition . . . clerk-typist in government

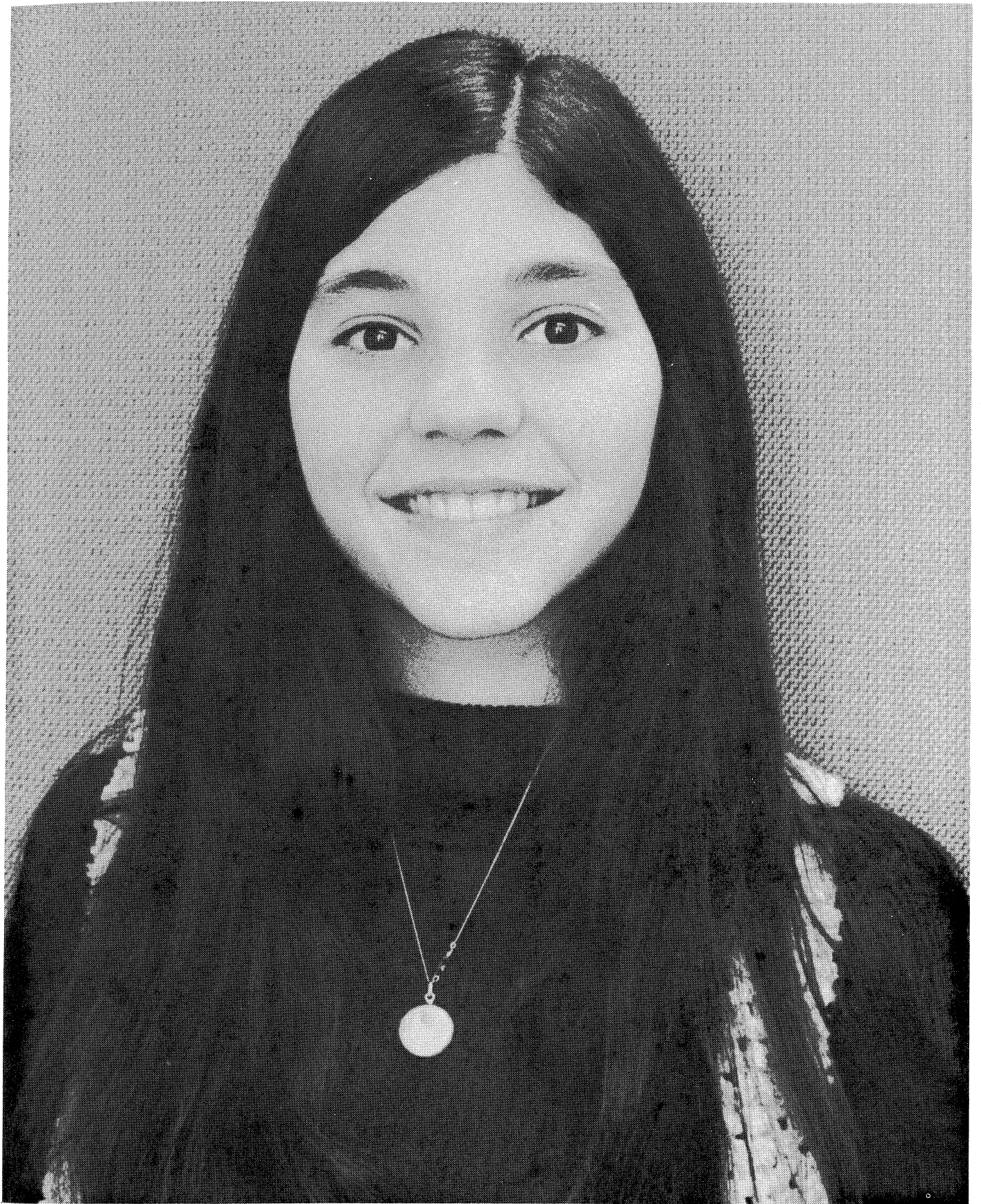




Linda Ann Harris

Before coming to MSSD, Linda attended high school in Penn Valley, Pennsylvania. She recently moved to Sarasota, Florida. Her future plans include college and a job in the business world.

Pet Peeve . . . trouble
Weakness . . . James
Favorite Subject . . . math
Favorite Saying . . . You know!
Favorite Sport . . . swimming
Favorite Pastime . . . shopping center
Ambition . . . NTID



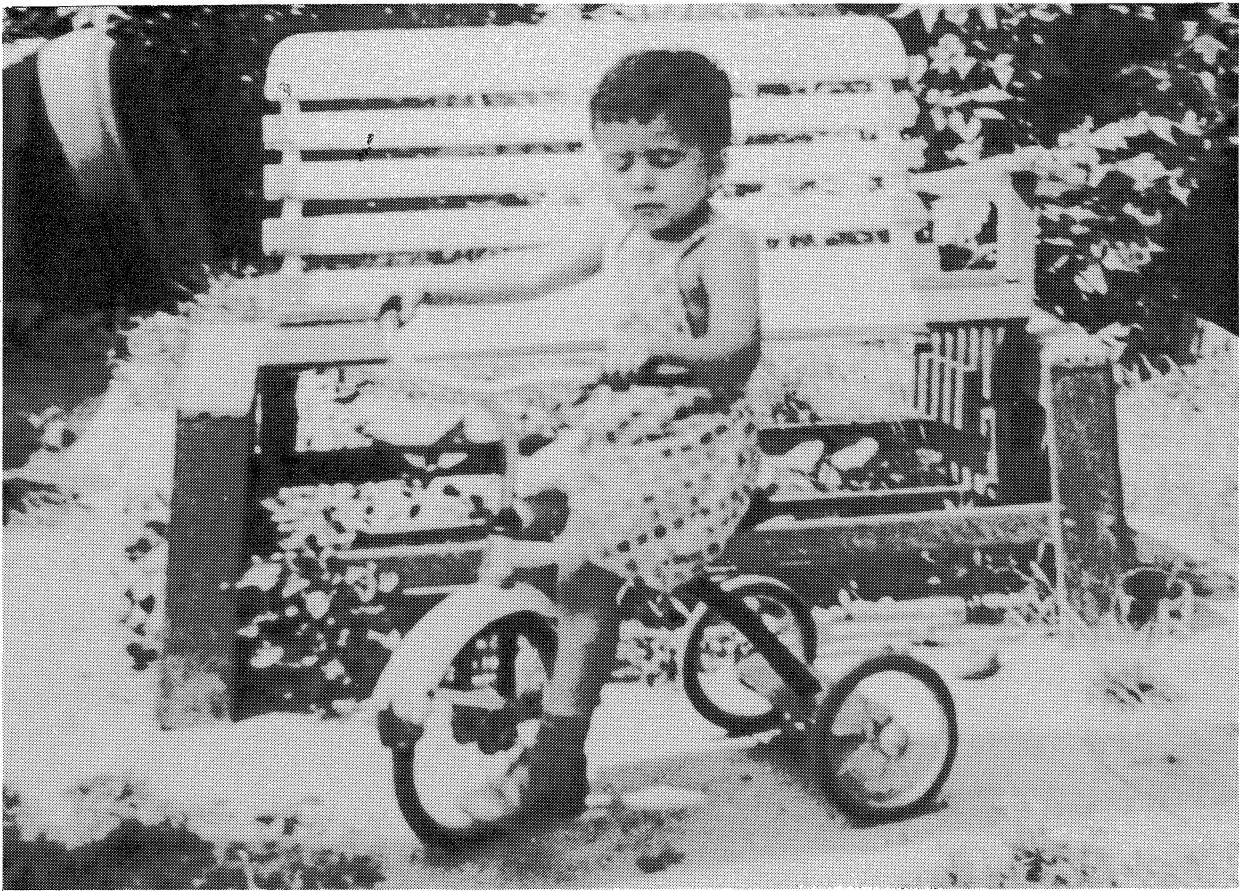


Sarah Louise Heck

Sally went to DePaul Institute in Pittsburgh before coming to MSSD. She plans to go to Minnesota for job training after graduation.

Pet Peeve . . . rumors
Weakness . . . dating
Favorite Subject . . . English
Favorite Saying . . . What for?
Favorite Sport . . . swimming
Favorite Pastime . . . shopping center
Ambition . . . undecided





Gregory Lamont Proctor

Greg came to MSSD from the Kendall School. His home is in Washington, D.C. He will seek a job with the government after graduation.

Pet Peeve . . . getting up in the morning
Weakness . . . girls
Favorite Subject . . . English
Favorite Saying . . . Oh boy!
Favorite Sport . . . basketball
Favorite Pastime . . . dating
Ambition . . . undecided





Bonnie Beth Ramsey

Bonnie, a resident of Camp Springs, Maryland, came to MSSD from the Kendall School. She will further her education at St. Petersburg College in Florida. Her occupational plans are undecided.

Pet Peeve . . . being late
Weakness . . . Mexican food
Favorite Subject . . . algebra
Favorite Saying . . . Really!
Favorite Sport . . . swimming
Favorite Pastime . . . reading
Ambition . . . St. Petersburg Junior College



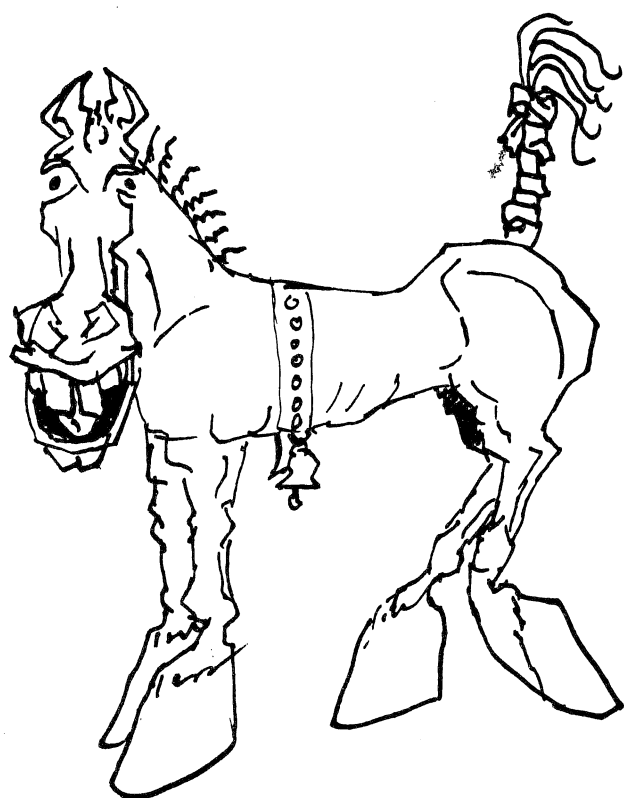


Doreen Jean Sawhill

Doreen came to MSSD from Des Moines, Iowa. She transferred from the Iowa School for the Deaf. Her future includes an education at Gallaudet College and a career as a teacher of the deaf in a foreign country.

Pet Peeve . . . cottage cheese
Weakness . . . soda drinks
Favorite Subject . . . history
Favorite Saying . . . Really!
Favorite Sport . . . golf
Favorite Pastime . . . reading
Ambition . . . Gallaudet College





EDITORIAL STAFF

Robin Elliott, Editor

Ellen Kidder, Assistant Editor and Artist

Gordon Roehrick, Business Manager and Sports

Patricia Robertson, Business

Tamara Czado Harper, Seniors

Margie Guensch, Photography

Theresa Strong, Photography

Gail Rivas, Dormitory

SUPPLEMENTAL SUPPORT

Susan Elkins

Bill Fitz-Patrick

Jean Fulton

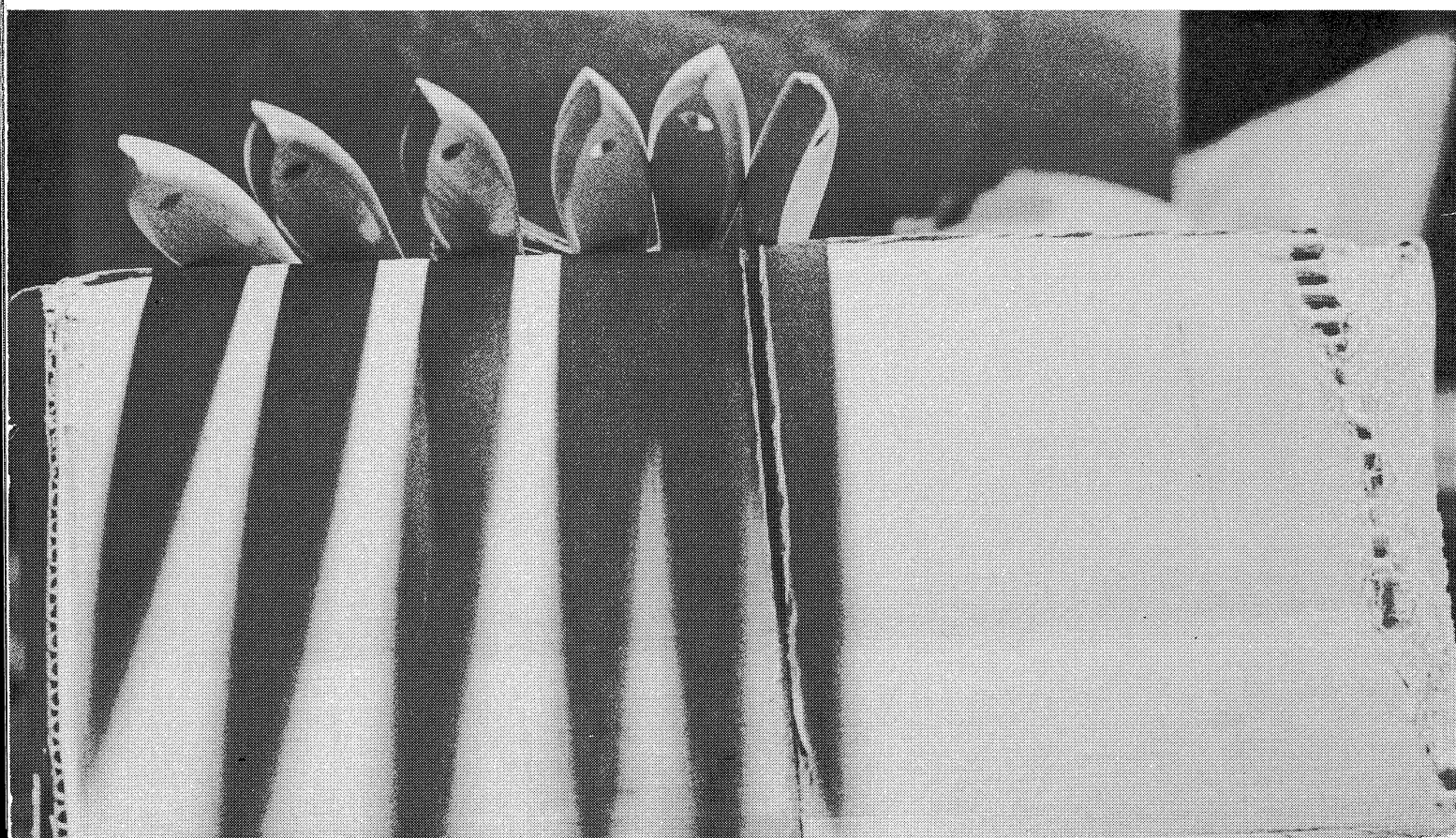
Mona Gold

Audrey Welch

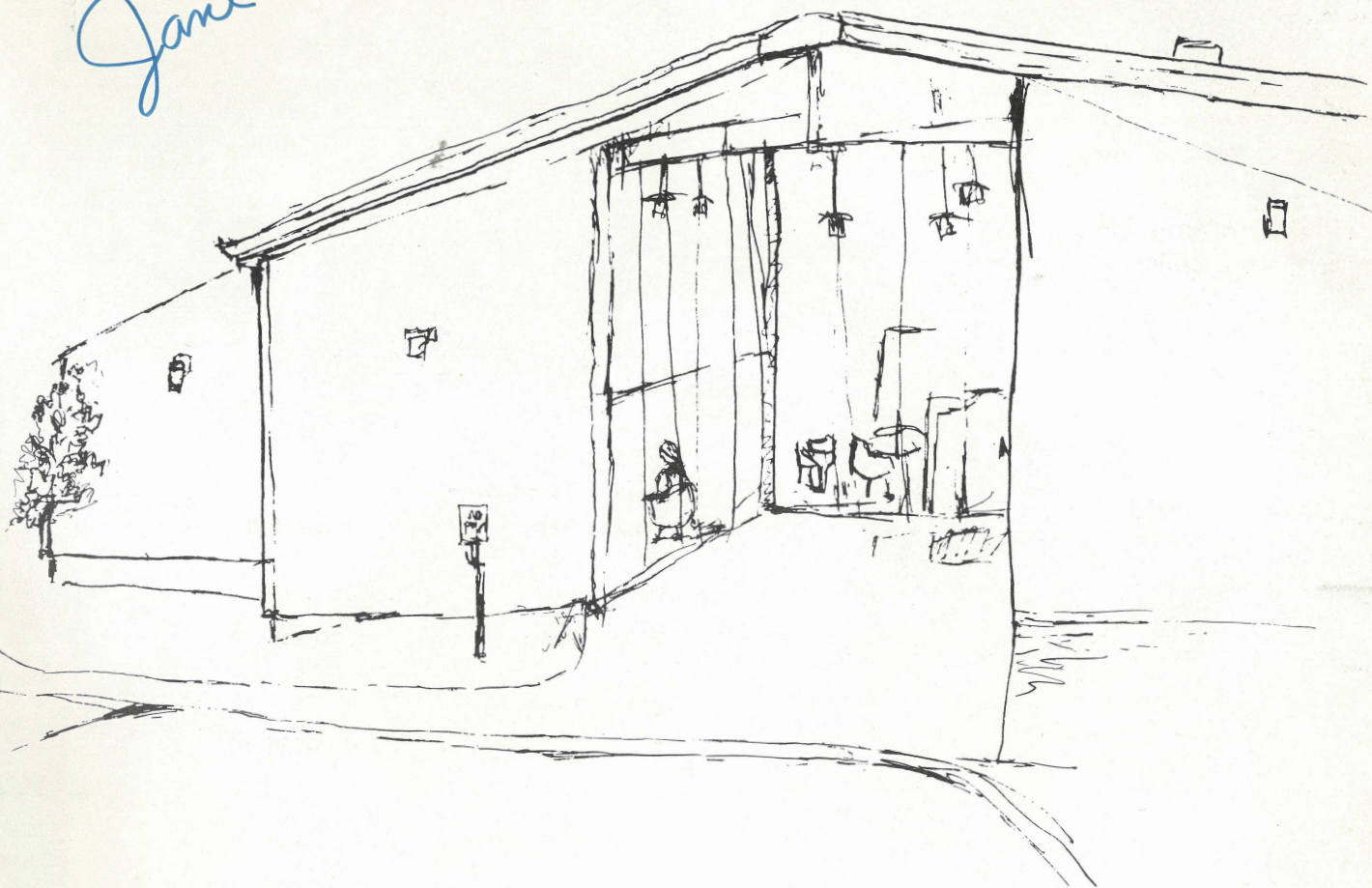
Instructional Systems Division

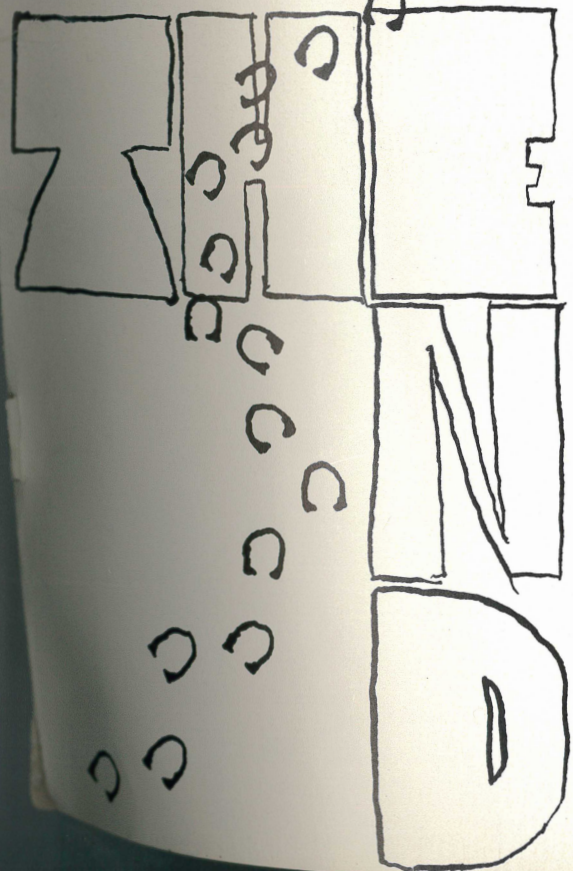
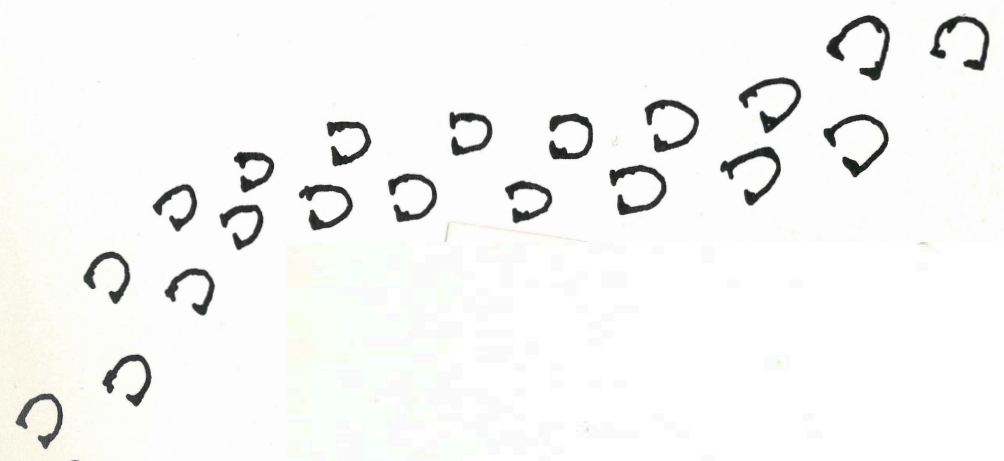
ADVISER

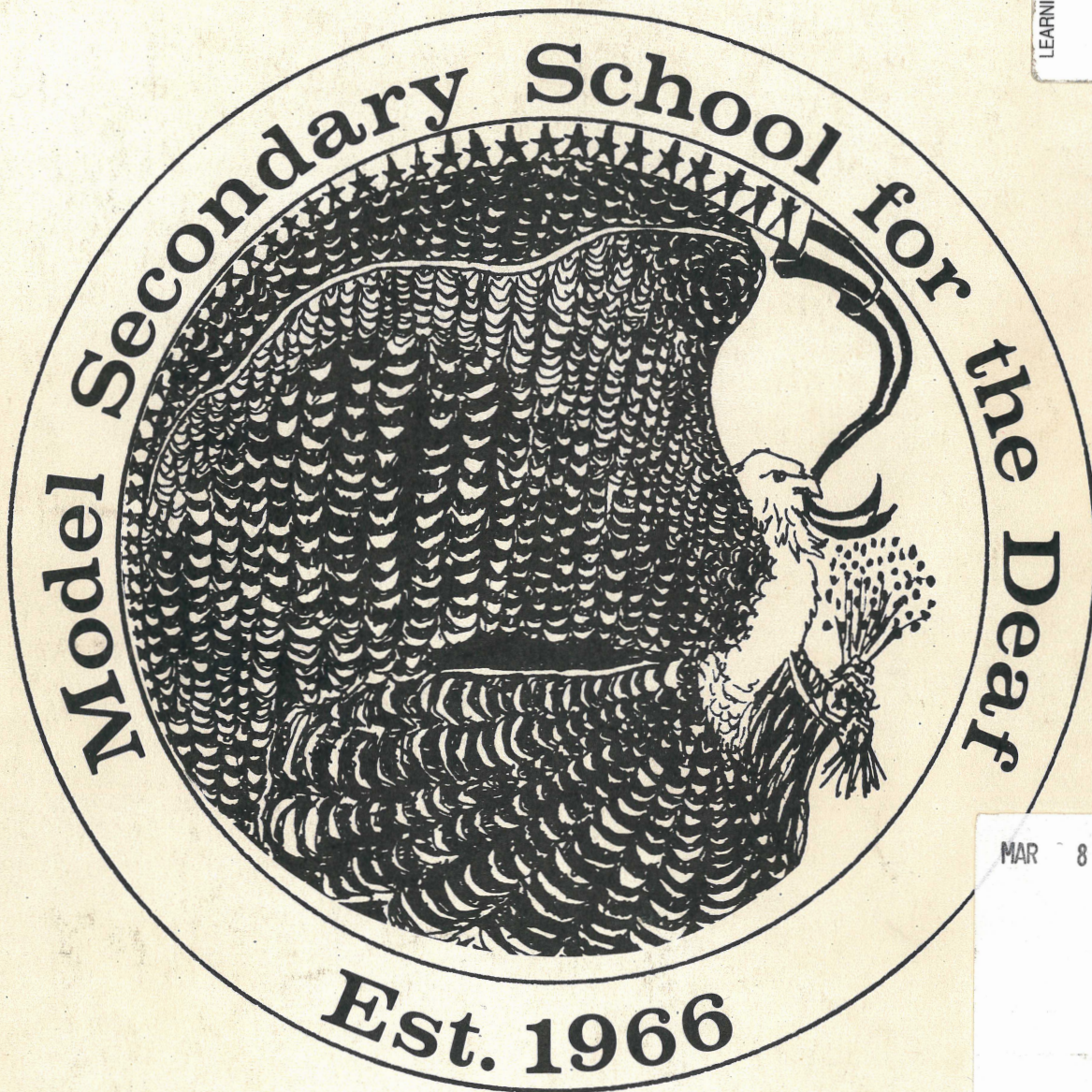
Richard Steffan



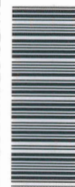
Jane







LEARNING RESOURCES CENTER/MSSO



T 48506

MAR 8 2005

32359