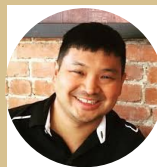


# Newsletter

*Gallaudet University*

*Department of Hearing, Speech, and Language Sciences*



## Message from the School Director:

With the semester drawing to an end, this is a nice opportunity to reflect on the joys and the challenges of the new academic year as well as this unprecedented year in recent history. Without a doubt, COVID-19, social distancing, and quarantining has brought significant challenges to our ability to teach, learn, serve, and conduct research. But, I appreciate the fact that all of us are working hard to connect with and support each other because of our unwavering commitment to our students, our profession, and our academic disciplines. As we began to open some on-campus labs and clinical services, I want to recognize your flexibility and cooperation in working with our public health officials and most importantly, thank you for your willingness to work on campus in these uncertain times. One of the things I learned in my role as School Director of Human Services and Sciences is how HSLS is a very efficient and well-organized department which serves as a glowing testament to excellent faculty and clinical educators as well as outstanding clinical, program, and departmental leaders. So I want to take this time to thank each of you for your dedication and your patience as we not only navigate the challenges of virtual teaching and learning but also the University's restructuring of Academic Affairs. As we all look forward to the new hope that 2021 brings, I wish you all good health and a very safe holidays.

## Upcoming Events

**HSLs Connect**  
Tuesday,  
December 15th  
12:30- 1:15pm  
Zoom ID:  
81398764955

Have a  
wonderful  
holiday and  
New Year!

See you in  
January!

## Publications

**Hawthorne, K., & Loveall, S.** (to appear). Interpretation of ambiguous pronouns in adults with intellectual disabilities. *Journal of Intellectual Disability Research*.

Loveall, S.J., **Hawthorne, K.**, & Gaines, M. (2020). Prosody in intellectual disabilities: A meta-analysis. *Journal of Communication Disorders*.

**Hawthorne, K.** & Fischer, S. Speech-language pathologists and prosody: Training and clinical practices. *Journal of Communication Disorders*.

## Message from the Department Chair:



Hello,  
We are now 9 months into the pandemic. A lot of things have happened since March. We have been asked to change, adapt, and even be more innovative during a stressful time. I am grateful to work with a wonderful group of faculty, staff, and students who have risen to the recent challenges we've had.

You all deserve time to relax and enjoy your family and friends (maybe virtually for some of us?!). I wish you all a wonderful holiday season filled with happiness, good health, and peace.

Karen



Ishara Ramkissoon, Ph.D., CCC-A joined our faculty this fall as an Associate Professor in the Doctor of Audiology program.

# Welcome to the Department!

Dr. Ramkissoon began her 11 year career as an Audiologist and Speech Therapist in South Africa in community clinic sites and hospitals, and clinical experiences in the United States in academic and hospital settings. Currently, she serves on ASHA'S Ad Hoc Committee on Global Engagement, and as a journal Editor for Perspectives (SIG 8, Audiology & Public Health). She conducts research in multicultural issues, aging, and environmental variables that affect auditory function. Dr. Ramkissoon has recieved external grant support for her work, and publicized her research through numerous conference presentations and publications in scholarly journals. Her accomplishments since joining Gallaudet in August of 2020 are as followed:

## Publications:

- Ramkissoon, I.** (2020). Engendering Cultural Responsiveness in Clinical Practice: Regarding Gender Identity and Expression. In A.B. Hamilton, C.A. Ramos-Pizarro, J.F. Rivera-Perez, W. Gonzalez, & K. Beverly-Ducker (Eds.) *Exploring Cultural Responsiveness: Guided Scenarios for Communication Sciences and Disorders (CSD) Professionals* (pp. 37-42). Rockville, MD: ASHA. [book chapter]
- Ramkissoon, I.** (2020). Cognition and Hearing Loss: Gender, Generational and Multilingual Considerations in Differential Diagnosis. In A.B. Hamilton, C.A. Ramos-Pizarro, J.F. Rivera-Perez, W. Gonzalez, & K. Beverly-Ducker (Eds.) *Exploring Cultural Responsiveness: Guided Scenarios for Communication Science and Disorders Professionals* (pp. 237-242 Rockville, MD: ASHA. [book chapter]
- Rivera Perez, J. F. & **Ramkissoon, I.** (2020). Listening to Silence: Second Language Acquisition and Preventing Misdiagnosis. In A.B. Hamilton, C.A. Ramos-Pizarro, J.F. Rivera-Perez, W. Gonzalez, & K. Beverly-Ducker (Eds.) *Exploring Cultural Responsiveness: Guided Scenarios for Communication Science and Disorders Professionals* (pp. 43-50). Rockville, MD: ASHA. [book chapter]
- Pillay, M., & **Ramkissoon, I.** (2020). Civic Responsibility and Global Health Care: Audiology Service Learning Program in Africa. *Perspectives of the ASHA Special Interest Groups*, 5, 1075–1084.

## Service Recognition:

- Professional Service Recognition Award, Mercy Life of Alabama & Mercy Medical (Nov. 2020)
- External Reviewer, Dissertation Oral Defense, Doctoral (Ph.D.) Candidate G. Dawood, Stellenbosch University, South Africa. An analysis of auditory functioning and capabilities of children with HIV/AIDS living in low socio-economic communities, (Sep. 2020).

## Conference Presentations/Awards:

- Certificate of Recognition: Meritorious Poster Submission, ASHA 2020 Annual Convention, *Paired Digits vs. Pediatric Words: SRT Measurement in Children with Language Disorder or Non-Native English* (proposal #10736).
- Ramkissoon, I.** (2020). *Paired Digits vs. Pediatric Words: Measuring SRT in Children with Language Disorder or Non-Native English Background*. Oral Presentation. South African Speech Hearing Language Association (SASHLA)/ASHA 2020 Virtual Conference.

## Audiology

The program created the entire structure of our academic/clinical education in a virtual format. The clinical team created 30 simulated cases used for training students on various aspects of diagnostic and hearing aid services. We also developed and implemented a phased reopening plan for GUHSC under new COVID-19 safety precautions. This allowed us to reinstate on-campus clinical training experiences for students.

We graduated 9 students! Congratulations to Drs. Bryant, Collett, Collis, Dawson, Goble, Harkey, Howell, Sacco, and Sparks!

We welcomed 14 new students in June admist the pandemic, and they started their clinical experiences in October.

Our second-year students are securing some impressive externships for next year! These include the American Institute of Balance, Arizona Hearing Center, Chesapeake Hearing Centers, Children's National Hospital, Dartmouth-Hitchcock Medical Center: Dept. of Audiology, Greater Baltimore Medical Center, Jacobi Medical Center, Kennedy Krieger Institute: Dept. of Audiology, Mayo Clinic Rochester: Division of Otorhinolaryngology, New York Eye & Ear Infirmary of Mount Sinai, Oregon Health and Sciences University, Piedmont Ear, Nose, Throat Associates, Potomac Audiology, and Professional Hearing Services.

Dr. Kristen Thornton successfully defended her PhD dissertation in June and was promoted to Assistant Professor in August.

We welcomed Dr. Ishara Ramkissoon to our program in August.



First-Year Au.D. Students



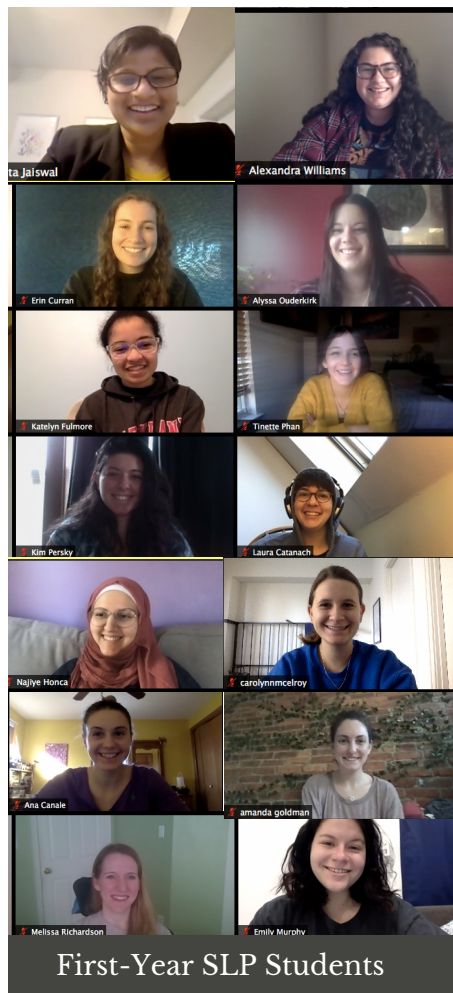
# Speech-Language Pathology Program

The SLP program has been busy this year. We are happy to announce that our reaccreditation was approved by ASHA without any areas of noncompliance.

We completed our first semester of fully remote coursework for both the first and second year cohorts. Thank you to everyone for flexibility as we navigate this unprecedented time in graduate education!

The SLP Team and first year students have been busy serving clients virtually in the GUHSC. Students have been learning how to plan, execute, and document sessions with a variety of clients via a virtual platform. In addition, Simucase, a simulated learning program, has been a wonderful way to supplement clinical hours and provide them unique learning and documentation opportunities. This new cohort of students have shown strong creativity, motivation, compassion, and resilience during this unprecedented time. A few clients are being served in person and we are so appreciative of Maggie Perez for going into the Center to provide these clients exemplary service.

The second year cohort has been busy completing their fall internships whether it be virtually, in person, or a hybrid model. Regardless of the significant changes due to COVID, they continue to focus on gaining the invaluable experiences that off campus settings and supervisors can provide.



First-Year SLP Students

We have some exciting changes in the program personnel. We have hired a new faculty member, Dr. Nahar Albudoor who will start in the fall 2021 semester. We are currently in the process of searching for a new clinical educator who we hope to join us in the spring 2021 semester. Thank you to students, faculty, and staff for participating in the search process for these positions!

Members of the SLP program have been invited to review submissions for the ASHA convention- Dr. Sanyu Jaiswal and second- year student, Hannah Brouse.

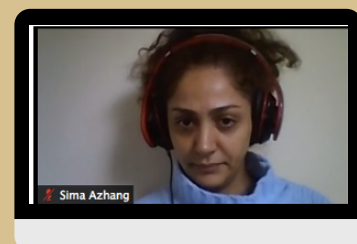
Our class of 2020 has a 100% employment rate in a CF and those that have reported, a 100% Praxis passing rate.

## Ph.D. Program

Two students defended their dissertations and graduated in late spring, 2020.  
Congratulations to Mel and Ashley!

Dr. Melissa Kokx-Ryan's dissertation was entitled *Evaluation of Low-Gain Hearing Aids as Treatment for Auditory Processing Deficits in Service Members with Normal Hearing Thresholds and History of mTBI*.

Dr. Ashley Zaleski's dissertation was *Oculomotor And Perceptual Measures Of Visual Motion Sensitivity In Individuals With Chronic Dizziness*.



One new student joined our PhD program this fall. Sima Azhang recently completed a master's in liberal arts at LSU. She is interested in research related to deafness. Welcome, Sima!